



**19 Oliver Court Patricia Close, Slough, SL1 5HE**  
**£275,000**

 **HORLER**



## 19 Oliver Court Patricia Close, Slough, SL1 5HE

This property is located in Patricia Close, Cippenham, Slough, a 10 minute walk to the Elizabeth Line at Burnham Station, so it's a perfect property for commuting into London! This delightful 2 bed/2 bathroom top floor apartment in the gated Oliver Court offers a perfect blend of comfort and convenience. With a large living/dining area and fully fitted kitchen we highly recommend you call today on 01753 621234 for viewings.



### Property Summary

As you enter this delightful 2bed/2 bathroom top floor apartment you are greeted by an open plan living/dining room which is ideal for relaxing or entertaining guests. The separate fully fitted kitchen boasts both base and eye level units along with integral appliances.

The main double bedroom comes complete with an ensuite shower providing a private sanctuary within your home. In addition there is a single bedroom and a bathroom.

This property also features an entry phone system for added security and peace of mind, as well as allocated parking space, making coming home a stress free experience.

With its prime location close to local amenities, this apartment offers a wonderful opportunity to embrace a comfortable life style in the heart of Cippenham. Don't miss out on the opportunity to make this charming property your new home. Call us today on 01753 621234 to arrange a viewing.

### General Information

Council Tax Band 'D'

Lease length 980 years.

Service charge £113.96 per month

Ground Rent £200.00 per annum

### Legal Note

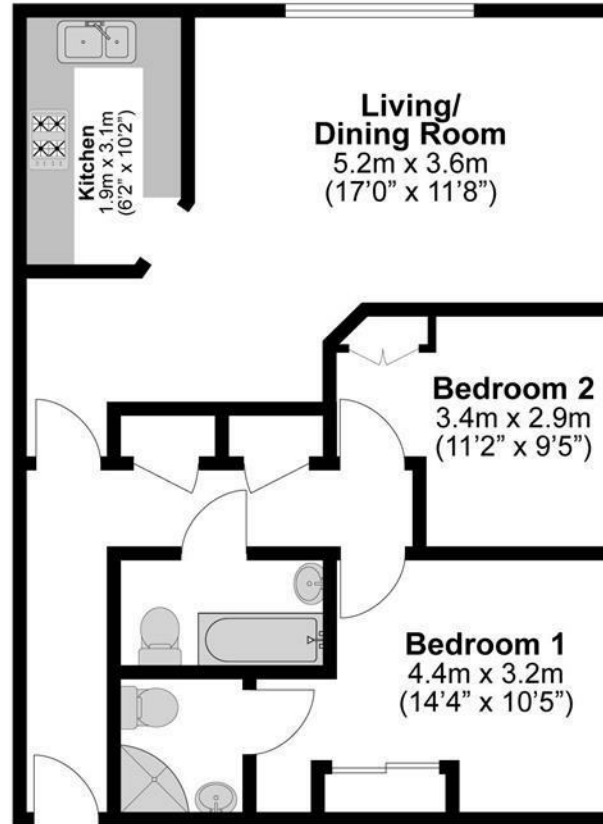
\*\*\*Although these particulars are thought to be materially correct their accuracy cannot be guaranteed and they do not form part of any contract\*\*\*.











**Illustrations are for identification purposes only,  
measurements are approximate, not to scale.**