



23a Clewer Hill Road, Windsor, Berkshire, SL4 4BU
£1,075,000

 **HORLER**

23a Clewer Hill Road, Windsor, Berkshire, SL4 4BU

Positioned in the desirable Clewer Hill Road area of Windsor, this stunning detached house offers a perfect blend of modern living and family comfort. Built in 2019, this spacious home spans in excess of 2000 square feet and features four well-appointed bedrooms, all with ensembles, making it ideal for families seeking both space and style. Located in a highly sought-after area, this home is within close proximity to some of Windsor's most esteemed schools, making it an ideal choice for families prioritising education.



Property Summary.

Nestled in the charming area of Clewer Hill Road, this stunning detached house, built in 2019, presents an exceptional opportunity for families seeking a modern and spacious home. With four generously sized bedrooms, each boasting its own generous in built wardrobes aswell as en-suite bathroom—two of which feature luxurious baths and the principle suite features a walk in wardrobe and generous ensuite bathroom with a seperate bath and shower—this property is designed for both comfort and convenience.

The ground floor offers a well-appointed WC, a welcoming living room, and an expansive kitchen that seamlessly integrates with a dining and lounge area, perfect for entertaining guests or enjoying family meals. The kitchen is equipped with top-of-the-line integrated Siemens appliances, including a fridge-freezer, hob, oven, microwave/oven, and dishwasher, alongside a standalone Siemens washing machine and dryer in the unique utility area on the first floor, ensuring that culinary enthusiasts will feel right at home.

The property also benefits from off-road parking for at least two vehicles with the added benefit of a wall mounted EV charger, a significant advantage in this desirable location. The south-facing rear garden provides a delightful outdoor space, ideal for enjoying sunny afternoons or hosting gatherings. The property is alarmed and benefit from a fitted Ring doorbell.

Situated close to esteemed educational institutions such as St Edward's, Clewer Green, Windsor Boys School, and Windsor Girls School, this home is perfectly positioned for families. With its modern specifications and thoughtful design, this property is not just a house; it is a place where cherished memories can be made. Do not miss the chance to make this exquisite family home your own.

Key Points.

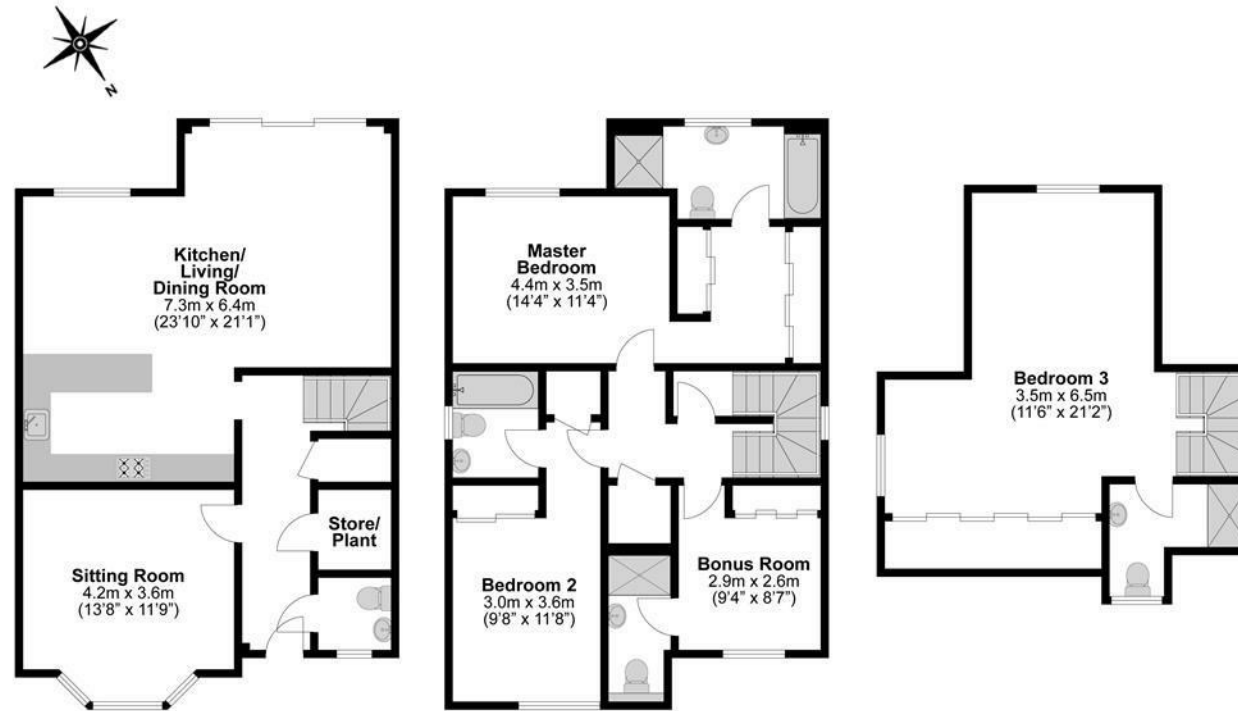
Key features.
4 Bedrooms with en-suites (with two having baths)
1 WC ground floor
1 Living Room
1 Kitchen, Diner and lounge
1 Pantry
Integrated Siemens appliances
Fridge-freezer, Hob, Oven, Microwave/Oven,
Dishwasher,
Standalone Siemens Washing Machine & Dryer
Wine chiller
Shutters in living room
Custom made blinds throughout
Ethernet Point in all rooms
TV Aerial in all rooms
House has connections for either
- High Speed Virgin Media Internet
- High Speed Fibre to premises
EV charger Point
4 zone heating system
Underfloor heating throughout ground floor
Nest thermostat
Smoke detectors throughout
Anti-mist mirrors in bathrooms
Automatic night lights in bathrooms

Legal Note.

Although these particulars are thought to be materially correct their accuracy cannot be guaranteed and they do not form part of any contract.







**Illustrations are for identification purposes only,
measurements are approximate, not to scale.**