



30A Main road Willows Riverside Park, Windsor, SL4 5TT  
£335,000

 **HORLER**



### 30A Main road Willows Riverside Park, Windsor, SL4 5TT

Located on the Willows, Riverside Park, Windsor this 2 bed, double unit park home is a must to be viewed. With an open plan living/dining room, separate kitchen, two double bedrooms - one with ensuite plus a family bathroom. Wrap around garden with patio area and off road parking for 2 vehicles. Age restricted 50 years.

Call today on 01753 621234 for viewings.



### Property Summary

Situated within the charming Willows Riverside Park in Windsor, this beautifully presented two-bedroom double unit offers a delightful blend of comfort and convenience. The property is ideally situated close to local amenities, excellent transport links, and the picturesque Thames River, making it a perfect choice for those seeking a vibrant community lifestyle.

Upon entering, you are welcomed into an open plan living and dining area that is both spacious and inviting, ideal for entertaining guests or enjoying quiet evenings at home. The well-equipped kitchen complements this space, providing functionality without compromising on style.

The two double bedrooms are thoughtfully designed, with ample storage solutions to keep your living space tidy. One of the bedrooms boasts an ensuite bathroom, while a family bathroom serves the other, ensuring privacy and convenience for all residents.

Outside, the property features a wrap-around garden complete with a terrace, perfect for al fresco dining or simply soaking up the sun. Additionally, off-road parking for two vehicles adds to the practicality of this lovely home.

This property is a must-see for anyone looking to enjoy the best of Windsor living. To arrange a viewing, please call 01753 621234 today.

### General Information

Family Park/No pets

Site Fees - TBC

Avanti Gas

Council Tax - Band 'A'

### Legal Note

\*\*\*Although these particulars are thought to be materially correct their accuracy cannot be guaranteed and they do not form part of any contract\*\*\*.

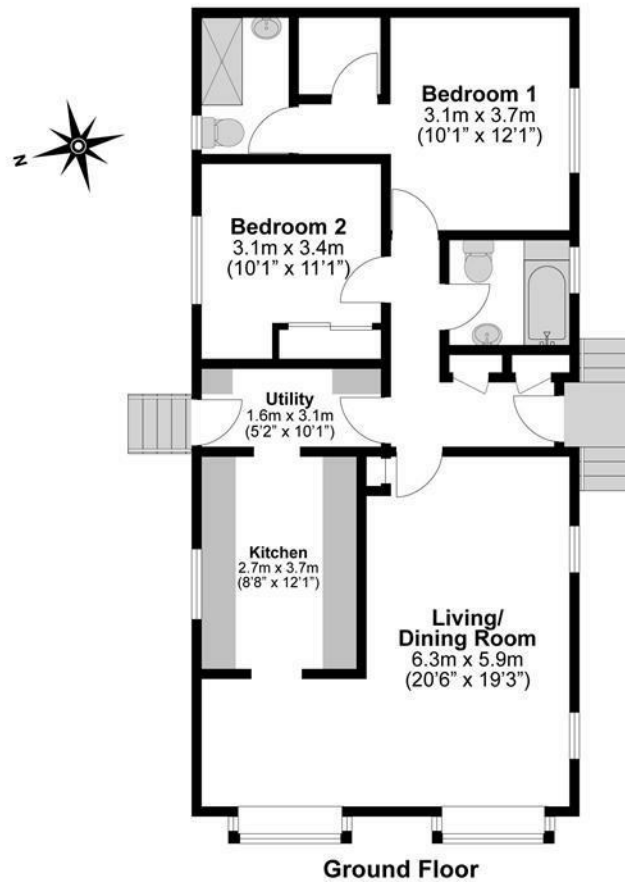












**Illustrations are for identification purposes only,  
measurements are approximate, not to scale.**