



7 Leigh Square, Windsor, Berkshire, SL4 4PP
£475,000

 **HORLER**

7 Leigh Square, Windsor, Berkshire, SL4 4PP

Tucked away in the peaceful position of Leigh Square, Windsor, this delightful end-terrace house offers a perfect blend of comfort and potential for families seeking a new home. Built in 1965, the property boasts three generously sized double bedrooms, providing ample space for relaxation and rest. The well-proportioned reception room serves as a welcoming area for family gatherings and entertaining guests.



Property Summary

Tucked away in the peaceful position of Leigh Square, Windsor, this delightful end-terrace house offers a perfect blend of comfort and potential for families seeking a new home. Built in 1965, the property boasts three generously sized double bedrooms, providing ample space for relaxation and rest. The well-proportioned reception room serves as a welcoming area for family gatherings and entertaining guests.

One of the standout features of this home is the south-facing garden, which is not only a suntrap but also includes a large "barn" style storage shed, ideal for gardening tools or outdoor equipment. The integral garage presents an exciting opportunity for conversion, allowing you to tailor the space to your needs, whether it be an additional living area, a kitchen, home office, or a playroom for the children.

Parking is a breeze with off-road space available for two vehicles, ensuring convenience for you and your guests. Furthermore, the property offers room to extend, providing the potential to enhance your living space even further, should you wish to do so.

This end-terrace family home is perfectly situated in a desirable area, making it an excellent choice for those looking to settle in Windsor. With its combination of space, outdoor enjoyment, and potential for development, this property is a wonderful opportunity not to be missed.

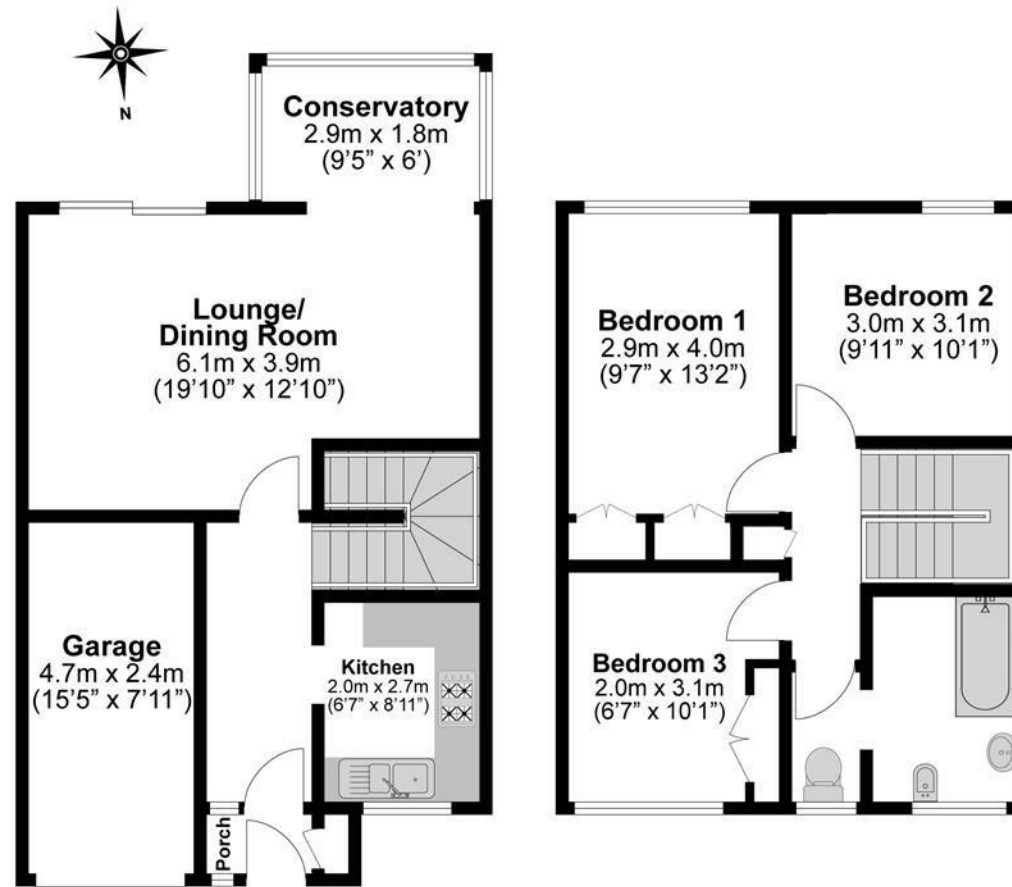
Legal note

****Although these particulars are thought to be materially correct, their accuracy cannot be guaranteed and they do not form part of any contract.****

Council tax band D







**Illustrations are for identification purposes only,
measurements are approximate, not to scale.**