



139 Vale Road, Windsor, SL4 5JR  
£599,950

 **HORLER**



## 139 Vale Road, Windsor, SL4 5JR

Located in Vale Road, West Windsor, this delightful four-bedroom semi-detached family home offers a perfect blend of comfort and convenience. The property is ideally situated close to local amenities and reputable schools, making it an excellent choice for families seeking a vibrant community.



### Property Summary

Located in Vale Road, West Windsor, this delightful four-bedroom semi-detached family home offers a perfect blend of comfort and convenience. The property is ideally situated close to local amenities and reputable schools, making it an excellent choice for families seeking a vibrant community.

Upon entering the ground floor, you are welcomed by a spacious living room that seamlessly connects to a family room, creating an inviting space for relaxation and social gatherings. The well-fitted kitchen/diner is perfect for family meals and entertaining, while a convenient washroom adds to the practicality of the layout.

The first floor boasts two generously sized double bedrooms, complemented by ample storage in the hallway and a family bathroom that caters to the needs of the household. Ascending to the top floor, you will find two additional double bedrooms, providing plenty of space for family members or guests, along with a family shower room for added convenience.

The property is further enhanced by a large, secluded rear garden, which features a shed and workshop, ideal for gardening enthusiasts or those in need of extra storage. Off-road parking for two cars at the front of the property ensures that you will never have to worry about finding a space.

This home is a wonderful opportunity for those looking to settle in a desirable area of Windsor, combining spacious living with a peaceful environment. Do not miss the chance to make this lovely property your own.

### General Information

Council Tax Band - D

### Legal Note

\*\*\*Although these particulars are thought to be materially correct, their accuracy cannot be guaranteed and they do not form part of any contract\*\*\*.



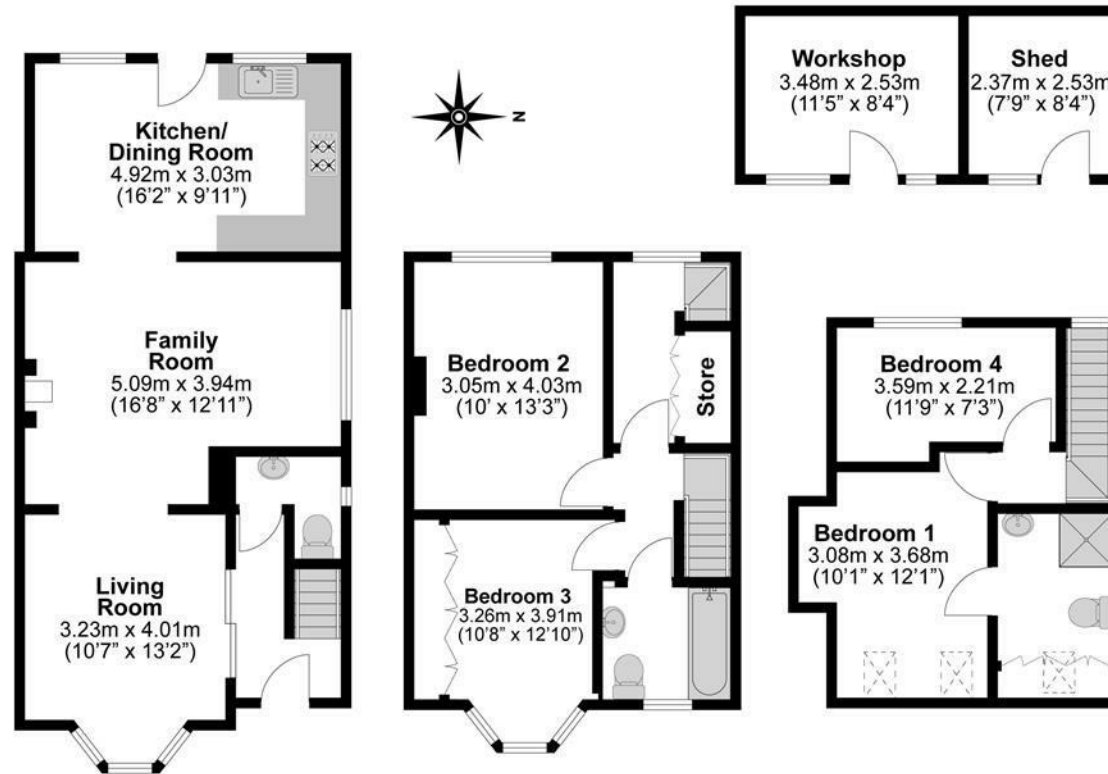








**Total Approximate Floor Area**  
1435 Square feet  
133 Square metres



**Illustrations are for identification purposes only,  
measurements are approximate, not to scale.**