



11 Jacob Close, Windsor, Berkshire, SL4 5PT
Offers in excess of £685,000

 **HORLER**

11 Jacob Close, Windsor, Berkshire, SL4 5PT

Located in the sought-after cul de sac of Jacob Close, Windsor, this impressive five-bedroom semi-detached house offers a perfect blend of space and modern living. Situated in a charming road within the popular Laing development, this property has been largely extended to meet the needs of contemporary family life.

This property benefits from a double-storey side extension, which creates a self-contained ground floor annexe and bedroom above. This versatile space is perfect for guests, extended family, or even as a home office, offering privacy and convenience.



Property summary

Located in the sought-after cul de sac of Jacob Close, Windsor, this impressive five-bedroom semi-detached house offers a perfect blend of space and modern living. Situated in a charming cul-de-sac within the popular Laing development, this property has been largely extended to meet the needs of contemporary family life.

Upon entering, you will find a welcoming atmosphere enhanced by two spacious reception rooms, ideal for both relaxation and entertaining. The fitted kitchen is well-equipped, providing a functional space for culinary pursuits. A notable feature of this home is the double-storey side extension, which creates a self-contained ground floor annexe. This versatile space is perfect for guests, extended family, or even as a home office, offering privacy and convenience.

Outside, the property boasts ample off-road parking, ensuring that you and your guests will never be short of space. The west-facing rear garden is a delightful retreat, perfect for enjoying the afternoon sun. Additionally, a well-specified timber outbuilding provides further options for use, whether as a workshop, studio, or additional storage.

This property is not just a house; it is a home that offers comfort, flexibility, and a prime location in one of Windsor's most desirable areas. With its generous living spaces and outdoor amenities, it is an ideal choice for families seeking a vibrant community and a place to create lasting memories. Do not miss the opportunity to make this exceptional property your own.

General Information

Legal Note

Although these particulars are thought to be materially correct, their accuracy cannot be guaranteed and they do not form part of any contract.

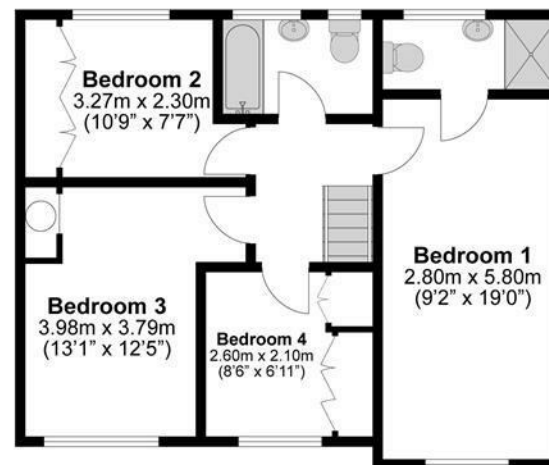
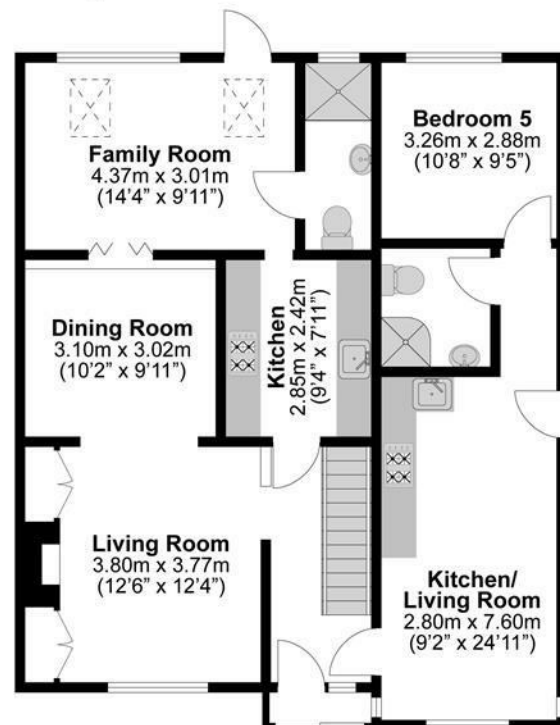




Total Approximate Floor Area

1601 Square feet

149 Square metres



**Illustrations are for identification purposes only,
measurements are approximate, not to scale.**