



2A The Limes Dedworth Road, Windsor, Berkshire, SL4 4US
Offers in excess of £365,000

 **HORLER**

2A The Limes Dedworth Road, Windsor, Berkshire, SL4 4US

Nestled in the charming cul-de-sac of The Limes, Oakley Green, this delightful two-bedroom maisonette offers a perfect blend of comfort and convenience, just a stone's throw from the historic town of Windsor. This property is ideal for those seeking a peaceful retreat while remaining close to local amenities and attractions.

One of the standout features of this property is the private rear garden, a perfect spot for enjoying the outdoors, whether it be for gardening, entertaining, or simply unwinding after a long day. Additionally, the maisonette comes with the added benefit of a share of the freehold, offering a sense of ownership and stability. The property also offers parking.



Entrance

Through partially glazed UPVC front door to....

Hall/Stairway

Hall and stairways to first floor with karndean flooring, cupboard on the landing, doors leading to living/dining room, bedrooms 1 and 2 and bathroom.

Living/Dining Room

With rear aspect UPVC double glazed window, karndean flooring, tv and power points. with room for freestanding lounge furniture and dining table and chairs.

Kitchen

With rear aspect UPVC double glazed window and a range of eye and base level units with complementary work surface, base unit fan heater, which is electric, integral kitchen appliances, karndean flooring, tiled splashbacks and walls and power points.

Bedroom 1

With front aspect UPVC double glazed window, karndean flooring, spacious storage, space for freestanding bedroom furniture and power points.

Bedroom 2

With front aspect UPVC double glazed window, space for freestanding bedroom furniture, built in wardrobe, karndean floor and power points.

Bathroom

With side aspect frosted UPVC double glazed window, airing cupboard, fitted shower bath, low level WC, washbasin vanity unit and heated towel rail.

Back Garden

South facing garden surrounded by a timber fence, paved patio area, shingle area either side and a wooden garden shed.

General Information

Council Tax Band D

Legal Note

Although these particulars are thought to be materially correct, their accuracy cannot be guaranteed and they do not form part of any contract.

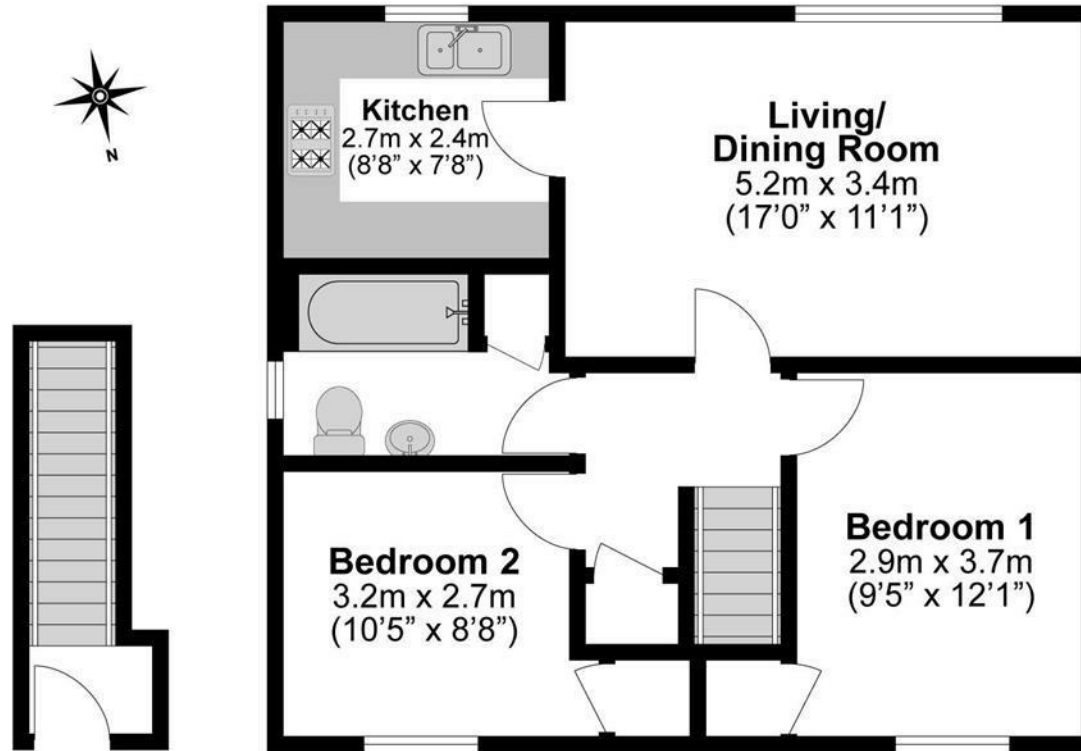




Total Approximate Floor Area

678 Square feet

63 Square metres



**Illustrations are for identification purposes only,
measurements are approximate, not to scale.**