



16 Ash Lane, Windsor, SL4 4PS  
£399,950

 **HORLER**

## 16 Ash Lane, Windsor, SL4 4PS

Situated in Ash Lane, Windsor, this delightful three-bedroom mid-terrace family home offers a perfect blend of comfort and convenience. Ideal for families, the property is situated in close proximity to local schools, essential amenities, and excellent transport links, making it an attractive option for those seeking a vibrant community.



### **Property Summary**

Upon entering, you are welcomed into a spacious open-plan living and dining area, which seamlessly flows into the modern kitchen. This inviting space is perfect for both entertaining guests and enjoying family time. The French doors lead you to a beautifully enclosed rear garden, providing a private outdoor retreat where you can relax or host gatherings.

The three well-proportioned bedrooms offer ample space for family living, ensuring everyone has their own sanctuary. The property is designed to cater to the needs of modern family life, with a layout that promotes both togetherness and privacy.

With its prime location and thoughtful design, this mid-terrace home is a wonderful opportunity for those looking to settle in the picturesque town of Windsor. Whether you are a first-time buyer or seeking a family home, this property is sure to impress. Don't miss the chance to make this lovely house your new home.

### **General Information**

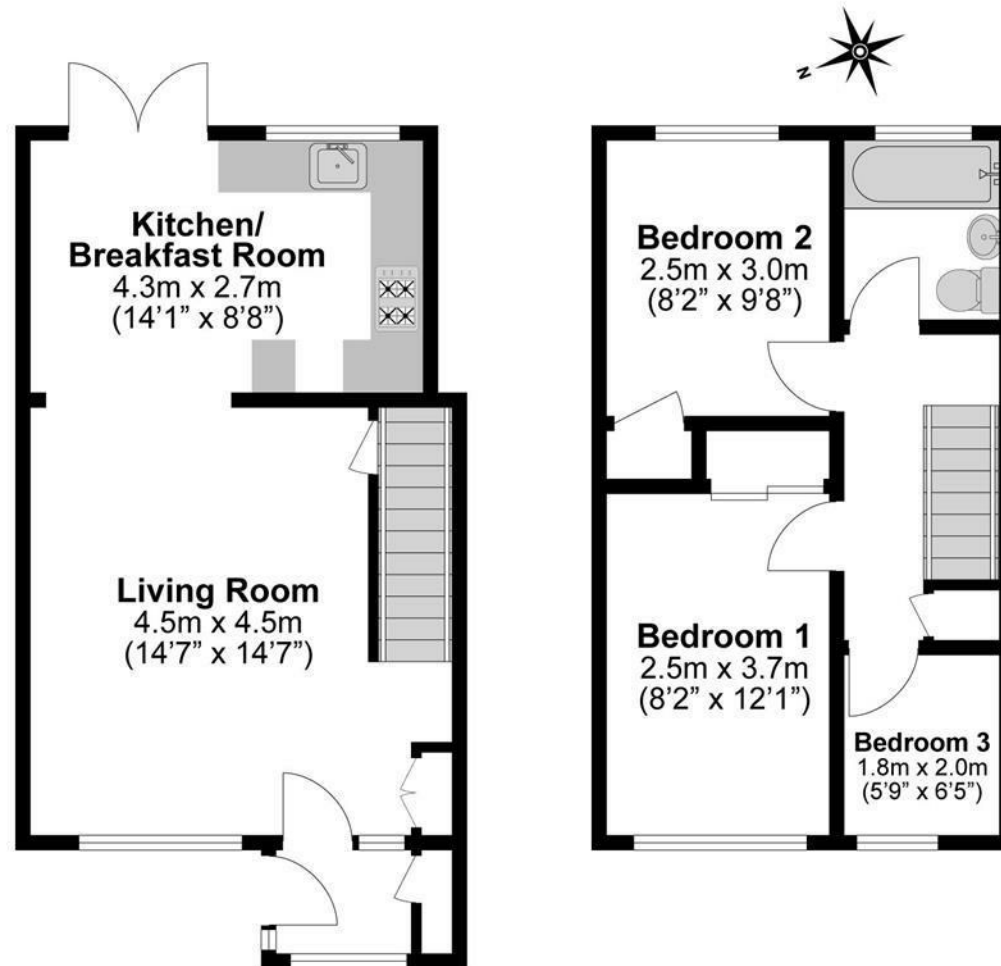
Council Tax Band 'D'

### **Legal Note**

\*\*\*Although these particulars are thought to be materially correct their accuracy cannot be guaranteed and they do not form part of any contract\*\*\*.







**Illustrations are for identification purposes only,  
measurements are approximate, not to scale.**