



11 Keeler Close, Windsor, Berkshire, SL4 4NL
Offers in excess of £350,000

 **HORLER**

11 Keeler Close, Windsor, Berkshire, SL4 4NL

Welcome to this 3 bedroom apartment located in the desirable area of Keeler Close, Windsor. This delightful property boasts three well-proportioned bedrooms, making it an ideal choice for families, professionals, or anyone seeking a comfortable living space. The apartment features a spacious reception room, perfect for relaxation or entertaining guests. One of the standout features of this property is its private outdoor space, providing a wonderful opportunity to enjoy the fresh air and sunshine right at your doorstep. Whether you wish to create a tranquil garden retreat or a lively area for social gatherings, this outdoor space offers endless possibilities.



Entrance

Through a UPVC front door with a large store room and stairs rising top the first floor.

Hall

With 3 storage cupboards and power points.

Living room

A rear aspect UPVC double glazed window, radiator and power points.

Kitchen

Front aspect UPVC double glazed window, with a range of eye and base level units with complementary work surface, fitted oven, gas hob with overhead extractor fan, space for freestanding white goods as well as dining table an chairs.

Bedroom one

A rear aspect UPVC double glazed window, fitted wardrobes with sliding doors, radiator and power points.

Bedroom two

A rear aspect UPVC double glazed window, radiator and power points.

Bedroom three

A front aspect UPVC double glazed window, built in alcove, radiator and power points.

Bathroom

A fully tiled bathroom with a frosted UPVC double glazed window, vanity wash hand basin with storage below, space saver bath with wall mounted shower and shower screen.

Front of property

An easy to maintain front garden with a patio seating area, picket fence enclosed and slate chippings.

General information

Years Remaining on the Lease 87

Original lease length:

Service charge: Approx £200 per annum

Ground Rent: £10.00 per annum

Vendors advise approx £5000 to increase lease which would take approximately 6 months

Legal note

****Although these particulars are thought to be materially correct, their accuracy cannot be guaranteed and they do not form part of any contract.****

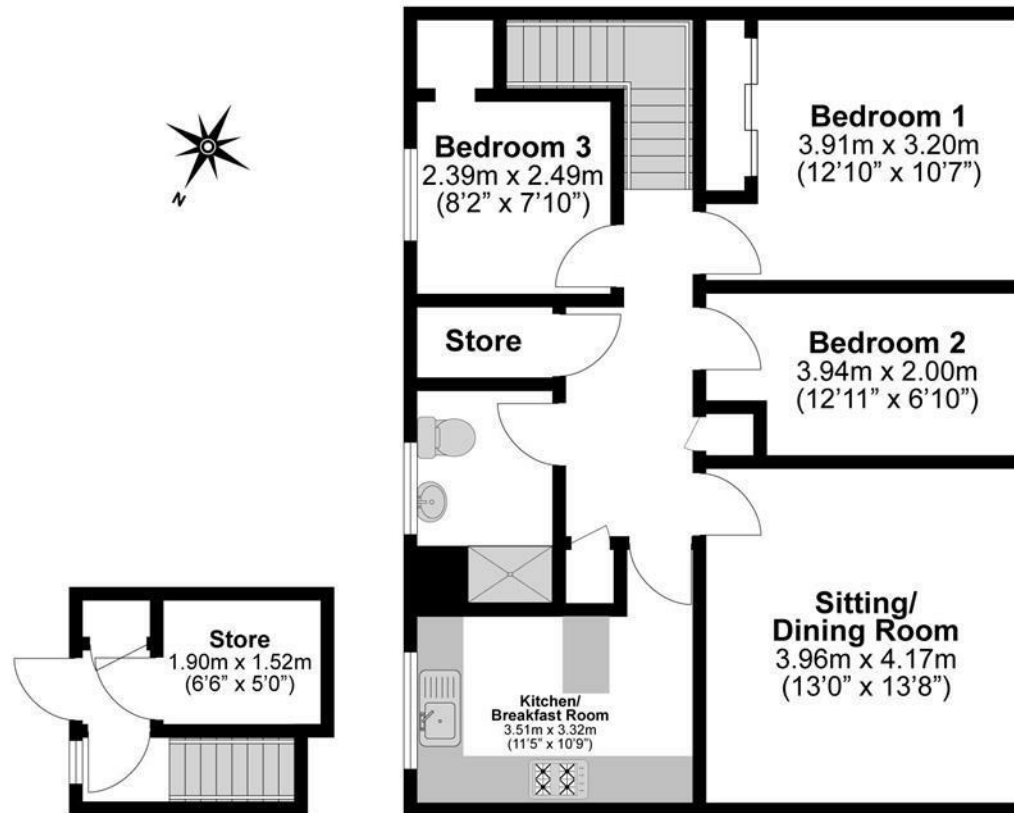




Total Approximate Floor Area

854 Square feet

79 Square metres



**Illustrations are for identification purposes only,
measurements are approximate, not to scale.**