



11 Keeler Close, Windsor, Berkshire, SL4 4NL
£365,000

 **HORLER**

11 Keeler Close, Windsor, Berkshire, SL4 4NL

A beautifully presented rarely available three bedroom first floor maisonette with its own garden. Three good size bedrooms, a fully fitted modern kitchen, bathroom and spacious living room. The owners are currently seeking information regarding extending the lease and communal parking is available.



Entrance

Through a UPVC front door with a large store room and stairs rising top the first floor.

Hall

With 3 storage cupboards and power points.

Living room

A rear aspect UPVC double glazed window, radiator and power points.

Kitchen

Front aspect UPVC double glazed window, with a range of eye and base level units with complementary work surface, fitted oven, gas hob with overhead extractor fan, space for freestanding white goods as well as dining table an chairs.

Bedroom one

A rear aspect UPVC double glazed window, fitted wardrobes with sliding doors, radiator and power points.

Bedroom two

A rear aspect UPVC double glazed window, radiator and power points.

Bedroom three

A front aspect UPVC double glazed window, built in alcove, radiator and power points.

Bathroom

A fully tiled bathroom with a frosted UPVC double glazed window, vanity wash hand basin with storage below, space saver bath with wall mounted shower and shower screen.

Front of property

An easy to maintain front garden with a patio seating area, picket fence enclosed and slate chippings.

General information

Years Remaining on the Lease 89

Original lease length:

Service charge: Approx £200 per annum

Ground Rent: £10.00 per annum

Vendors advise approx £5000 to increase lease which would take approximately 6 months

Legal note

****Although these particulars are thought to be materially correct, their accuracy cannot be guaranteed and they do not form part of any contract.****

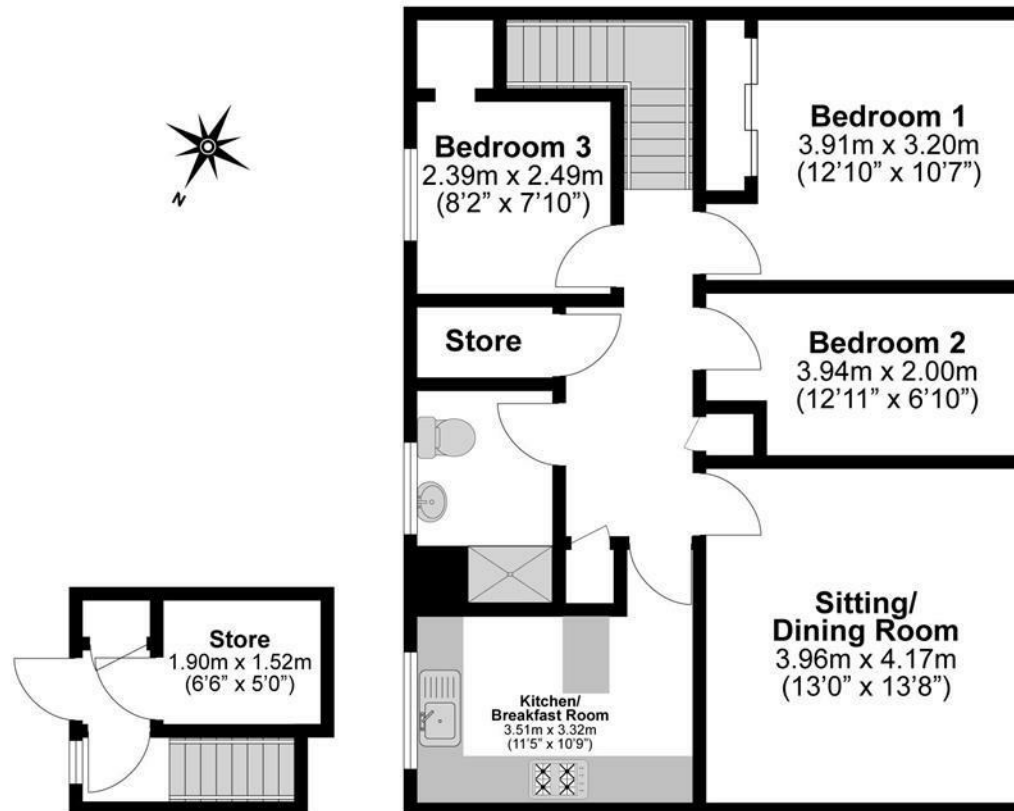




Total Approximate Floor Area

854 Square feet

79 Square metres



**Illustrations are for identification purposes only,
measurements are approximate, not to scale.**