



38 Keeler Close, Windsor, SL4 4NL
£445,000

 **HORLER**

38 Keeler Close, Windsor, SL4 4NL

Located in Keeler Close Windsor, this delightful terraced house taking an elevated position. Boasting three generously sized double bedrooms, this property is perfect for a growing family or those in need of extra space.



As you step inside, you'll be greeted by a spacious kitchen diner, light and airy living room provides the perfect setting for relaxation after a long day.

One of the highlights of this property is the well-maintained garden, offering a tranquil space to enjoy the outdoors. Additionally, a garage at the rear of the property provides convenient parking or extra storage space.

Situated within walking distance of local schools, transport links, and recreation grounds, this home offers both convenience and a sense of community.

Don't miss out on the opportunity to make this charming property your own. Contact us today to arrange a viewing.

General Information

Council Tax Band: D

Tenure: freehold

Legal Note

Although these particulars are thought to be materially correct their accuracy cannot be guaranteed and they do not form part of any contract

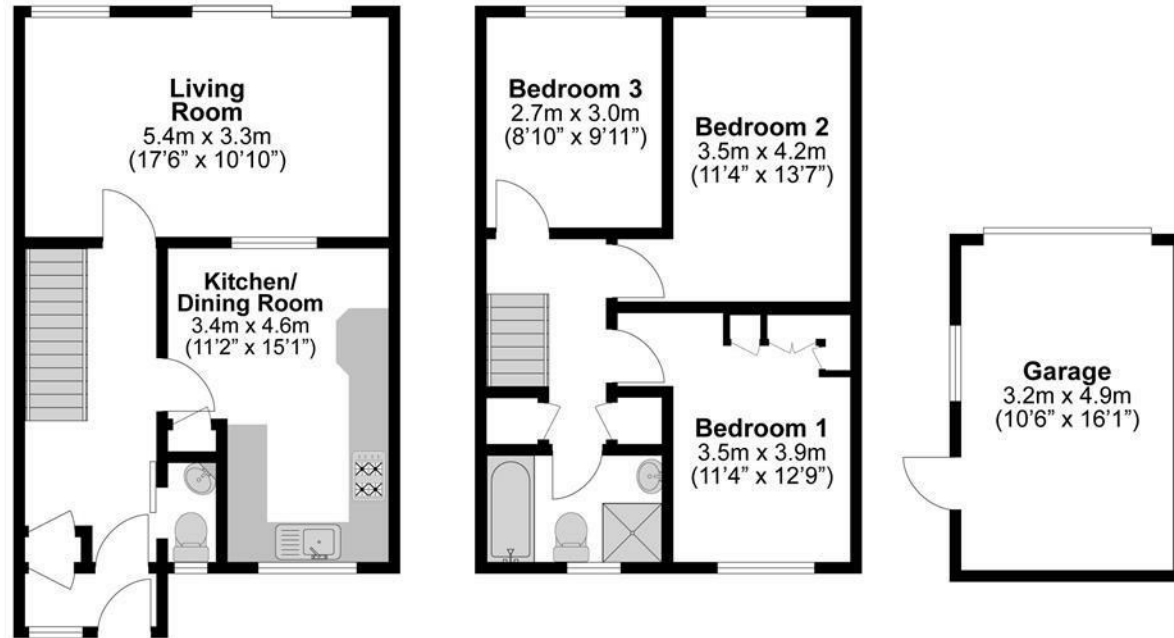




Total Approximate Floor Area

979 Square feet

91 Square metres



**Illustrations are for identification purposes only,
measurements are approximate, not to scale.**