



33 Brownfield Gardens, Maidenhead, SL6 2RJ
£325,000

 **HORLER**

33 Brownfield Gardens, Maidenhead, SL6 2RJ

Welcome to Brownfield Gardens, Maidenhead - and to a luxurious park home that offers a perfect blend of comfort and style. This stunning property boasts a spacious open plan living and dining area, seamlessly connected to a fully fitted kitchen, making it ideal for entertaining guests or simply relaxing after a long day.

With two generously sized bedrooms, including a larger-than-normal main bedroom with its own ensuite shower room, and an additional double bedroom along with a family bathroom, this park home provides ample space for you and your loved ones to unwind and rejuvenate.

The property has a secluded rear garden and parking to the front of the property for 2 cars.

Call today on 01753 621234 for viewings



Property Summary.

Located on the very popular, family and PET friendly mobile home site close to Maidenhead Town Center and Train station, this beautifully presented home captures the essence of conventional park home design with its generous room measurements and abundant storage space. With a large open plan living/dining room, modern kitchen, a larger than average double-bedroom complete with an en-suite bathroom, a walk-in closet, second double bedroom and family bathroom and expansive bay windows that illuminate the living areas with natural light. You'll love this classic yet contemporary take on traditional charm!

With a large and secluded rear garden and parking at the front of the property for two cars, please call today on 01753 621234 to book a viewing.

General Information

Ground rent £240 per month (including water)

Family Park

Council Tax Band 'A'

Cats and dogs allowed

Heating and cooking - mains gas

Brand new property - not lived in before

No wooden sheds - must be metal or reinforced plastic

Legal Note

Although these particulars are thought to be materially correct their accuracy cannot be guaranteed and they do not form part of any contract.





Brownfield Gardens SL6

Approximate Gross Internal Floor Area = 68.9 sq m / 742 sq ft

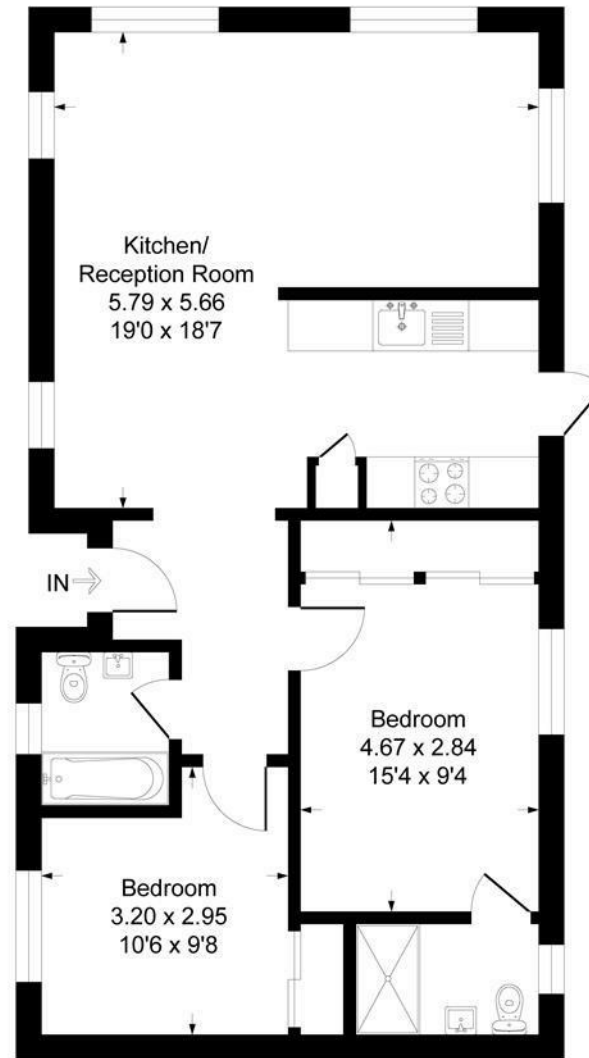


Illustration for identification purposes only, measurements are approximate, not to scale.
Produced By Esjay Property Marketing