



1 Sandalwood Lodge, 71 Imperial Road, Windsor, SL4 3FL
£450,000

 **HORLER**

1 Sandalwood Lodge, 71 Imperial Road, Windsor, SL4 3FL

Nestled in the heart of Imperial Road, Windsor, this charming ground floor apartment is a true gem waiting to be discovered. Boasting 2 bedrooms and 2 bathrooms, this property offers a perfect blend of comfort and style.



Property Summary.

Nestled in the heart of Imperial Road, Windsor, this charming ground floor apartment is a true gem waiting to be discovered. Boasting 2 bedrooms and 2 bathrooms, this property offers a perfect blend of comfort and style. The two allocated parking spaces make parking in Windsor stress free.

As you step inside, you are greeted by an inviting open plan living and dining area, seamlessly connected to a bespoke kitchen. The main bedroom features an ensuite shower room, providing a touch of luxury to your everyday routine, while the second double bedroom offers ample space for guests or family members.

One of the standout features of this apartment is its fantastic location. Situated on the outskirts of Windsor Town centre, you are just a stone's throw away from some of the most iconic attractions that Windsor has to offer. Take a leisurely stroll to explore the historic Windsor Castle, immerse yourself in the beauty of Windsor Great Park, or enjoy a peaceful walk along The Long Walk and the picturesque River Thames.

Whether you are looking for a peaceful retreat or a vibrant urban lifestyle, this apartment caters to all your needs. Don't miss this opportunity to make this wonderful property your new home in Windsor.

General Information

Lease Start Date 01 January 2017

Lease Term 125 years

Service Charge £2660.00per annum (£1330.00 every 6 months)

Ground Rent £400.00 per annum

Council Tax Band 'E'

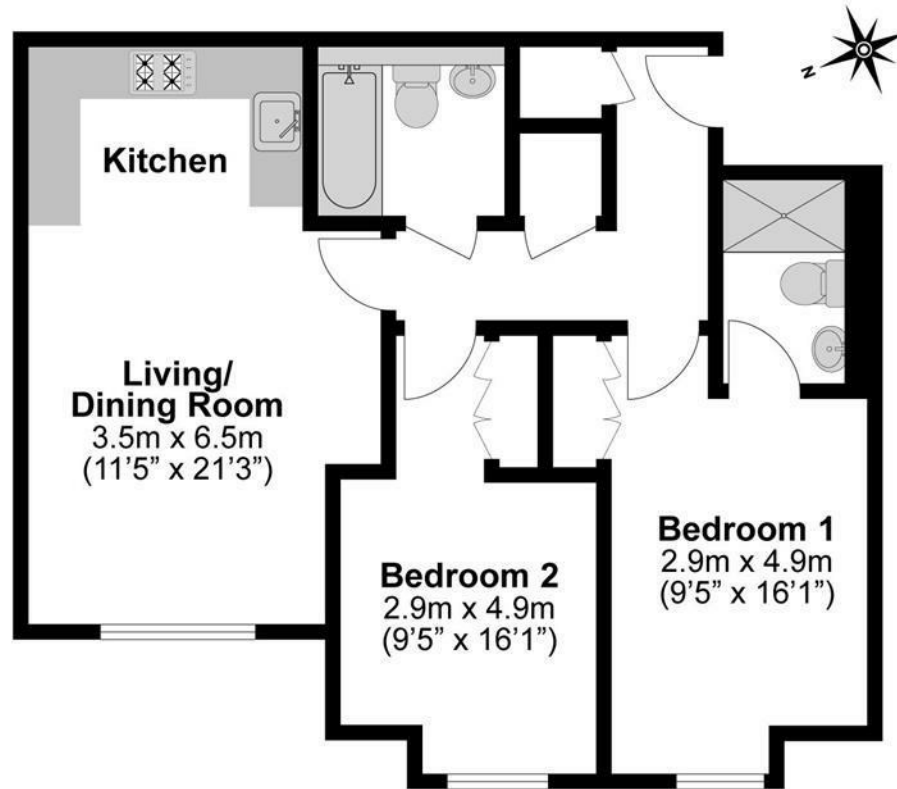
Legal Note

Although these particulars are thought to be materially correct their accuracy cannot be guaranteed and they do not form part of any contract.





Total Approximate Floor Area
743 Square feet
69 Square metres



**Illustrations are for identification purposes only,
measurements are approximate, not to scale.**