



5 Little Woodlands, Windsor, SL4 3RF
£675,000

 **HORLER**

5 Little Woodlands, Windsor, SL4 3RF

Nestled in the charming Little Woodlands, this detached 4-bedroom family home just off Hatch Lane is a true gem waiting to be discovered. As you step inside, you are greeted by two inviting reception rooms - a spacious living room boasting a beautiful bay window and a dining room with French doors opening up to the picturesque rear garden.



Property Summary

Nestled in the charming Little Woodlands, this detached 4-bedroom family home located just off Hatch Lane is a true gem waiting to be discovered. As you step inside, you are greeted by two inviting reception rooms - a spacious living room boasting a beautiful bay window and a dining room with French doors opening up to the picturesque rear garden.

The heart of this home is the fully fitted kitchen that seamlessly flows into a delightful conservatory, creating a perfect space for family gatherings or quiet mornings. With a convenient washroom on the ground floor, this property is designed for modern living.

Upstairs, you will find 4 well-appointed bedrooms offering comfort and privacy for the whole family. The family bathroom is designed to cater to all your needs.

Outside, the property benefits from a larger than average plot with additional space to the side as well as a double detached garage and a paved driveway provide ample parking for multiple vehicles, ensuring convenience for you and your guests. The secluded southwest facing rear garden is a tranquil oasis where you can unwind and enjoy the beauty of nature right at your doorstep.

Don't miss the opportunity to make this house your home and create lasting memories in this wonderful property in the heart of Windsor. Call today on 01753 621234

General Information

Council Tax Band 'F'

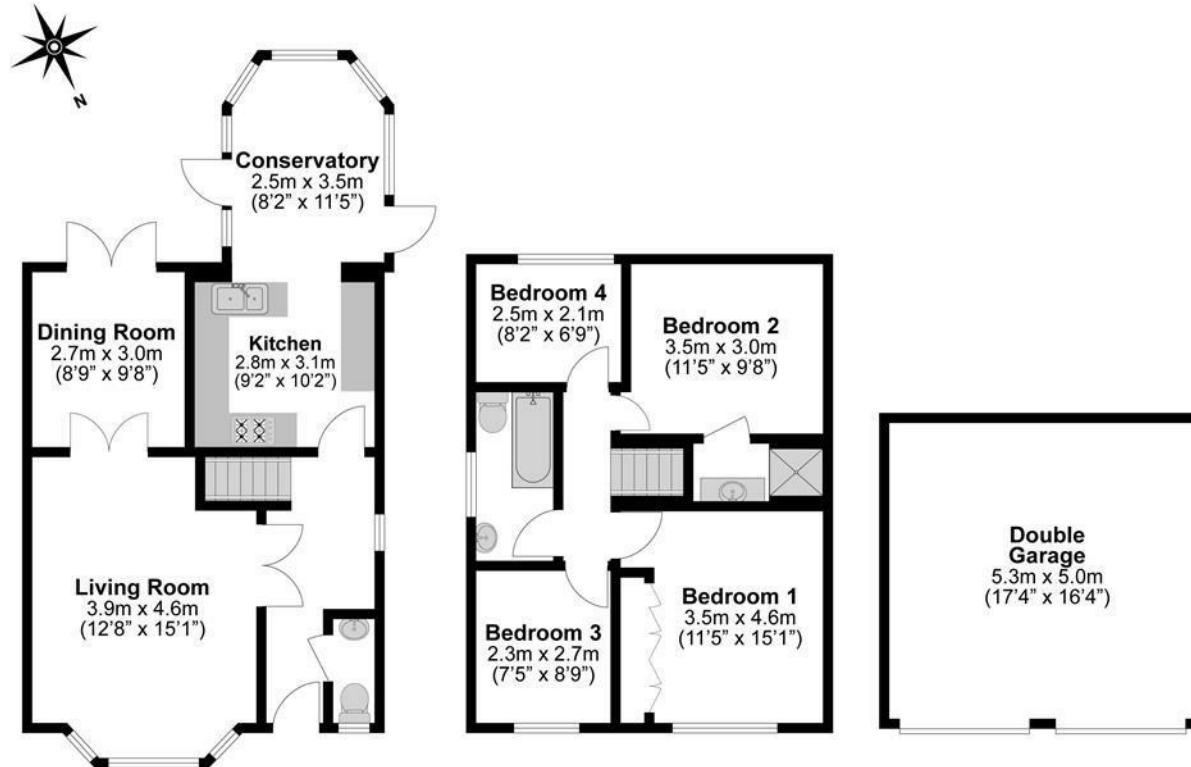
Legal Note

Although these particulars are thought to be materially correct, their accuracy cannot be guaranteed and they do not form part of any contract





Total Approximate Floor Area
1420 Square feet
132 Square metres



**Illustrations are for identification purposes only,
measurements are approximate, not to scale.**