



4 The hermitage Warfield Street, Warfield, Bracknell, RG42 6AS
£375,000

 **HORLER**

4 The hermitage Warfield Street, Warfield, Bracknell, RG42 6AS

Nestled in the charming Warfield Street of Bracknell, this delightful two-bedroom house on a gated community is a true gem waiting to be discovered. Situated in the recently refurbished park of The Hermitage, this property offers a serene and picturesque setting for its lucky new owners.

With a bright and airy living and dining room; a well presented and modern kitchen/diner with integrated appliances including Bosch washing machine, AEG ovens and induction hob, the main bedroom has the luxury of an ensuite shower room and dressing area; there is as a second double bedroom with bespoke fitted wardrobes and a further bathroom.

Call today on 01753 621234 to arrange a viewing.



Upon entering, you are greeted by two spacious reception rooms, perfect for entertaining guests or simply unwinding after a long day. The property features two well-appointed bedrooms, providing ample space for relaxation and rest.

The highlight of this home is the contemporary kitchen diner with integrated appliances including a Bosch washing machine, AEG ovens and AEG induction hob in a bright and inviting space that seamlessly flows into the private fields beyond, creating a tranquil backdrop for your daily meals.

Convenience is key with this gated property, as it is ideally located close to local amenities and excellent transport links, making daily errands and commutes a breeze.

With no onward chain, the path to making this house your home is clear and hassle-free. Don't miss out on the opportunity to own this beautifully presented property in a sought-after location.

Call today to arrange your viewing!

General Information

Council Tax Band 'A'

Pitch Fee TBC

OVER 45'S

Pets ALLOWED

Legal Note

Although these particulars are thought to be materially correct their accuracy cannot be guaranteed and they do not form part of any contract.





The Hermitage RG42

Approximate Gross Internal Floor Area = 83.7 sq m / 902 sq ft

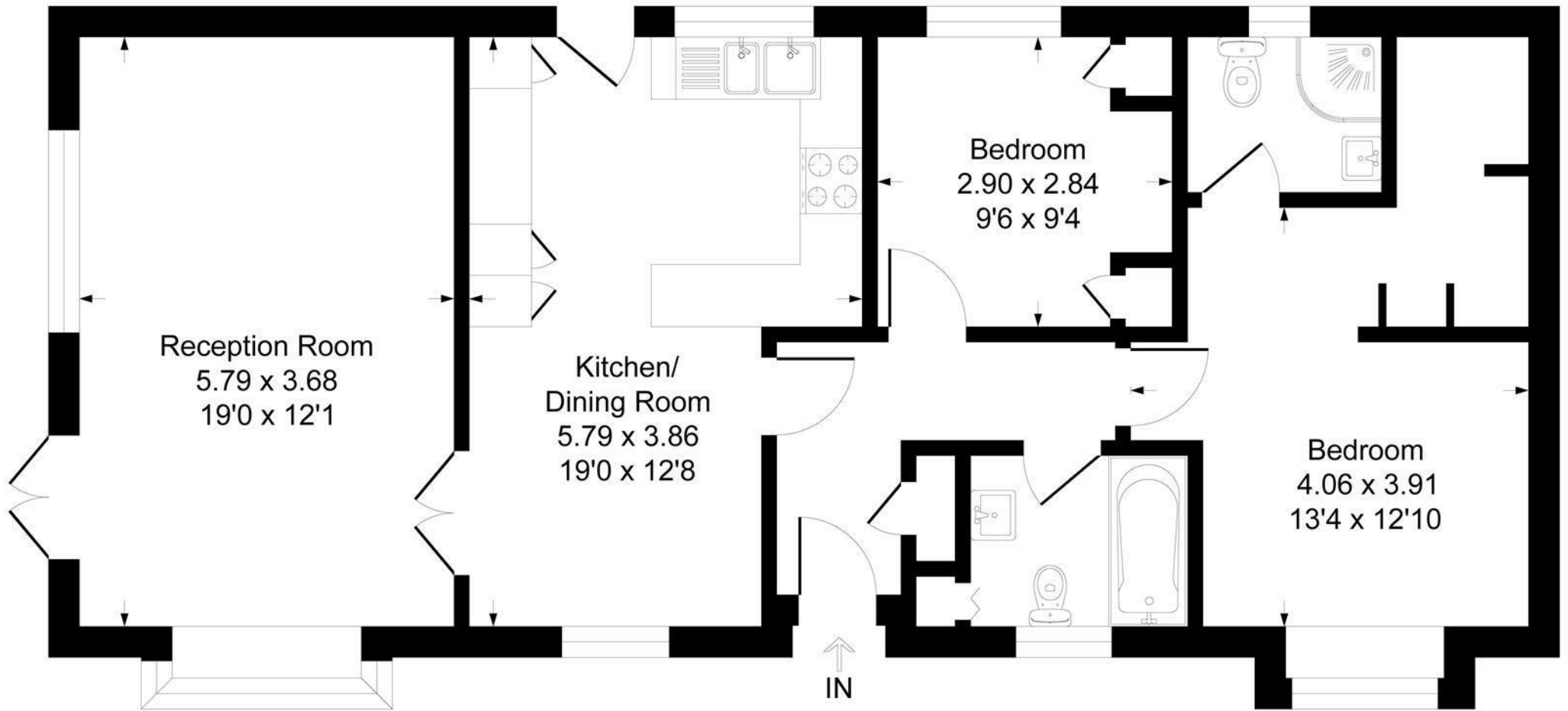


Illustration for identification purposes only, measurements are approximate, not to scale.
Produced By Esjay Property Marketing