



32 Windermere Close, Egham, TW20 8JR
£425,000

 **HORLER**

32 Windermere Close, Egham, TW20 8JR

A three bedroom family home situated In Egham being close to local amenities, schools and transport links. This end of terrace corner property comprises 3 double bedrooms, an open plan living/kitchen area, family bathroom upstairs, washroom downstairs and a private and secluded garden.

For viewings, please call on 01753 621234



Entrance

Through partially glazed UPVC front door leading to.....

Living/Kitchen

With rear aspect UPVC double glazed French doors and rear aspect UPVC double glazed window from kitchen, laminate wood flooring throughout, recessed downlights, kitchen with a range of eye and base level units with complementary work surface, induction hob with overhead extractor fan hood, integrated oven, space for freestanding washing machine, fridge freezer, mixer tap and power points.

Washroom

With low level wc and pedestal wash hand basin.

Bedroom 3

Rear aspect UPVC double glazed window, power points and ample room for freestanding bedroom furniture.

Bedroom 1

With rear aspect UPVC double glazed window, wall hung radiator, laminate flooring, power points and space for freestanding bedroom furniture.

Bedroom 2

Rear aspect UPVC double glazed window, laminate flooring and power points and space for freestanding bedroom furniture.

Family Shower Room

With rear aspect frosted UPVC double glazed window, low level wc, glass cubicle shower unit, pedestal wash hand basin, heated towel rail, tiled flooring and walls.

Rear Garden

A secluded back garden with wooden fence surround, timber shed to the ear, laid mostly to lawn with adjacent flower beds.

Front of Property

With paved path leading to the front door with wooden fence to the right hand side.

General Information

Council Tax Band C

Legal Note

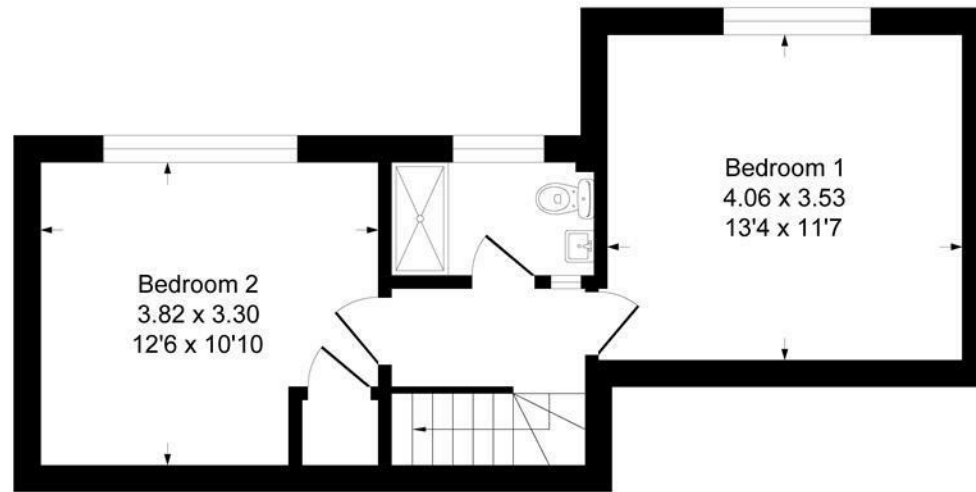
****Although these details are thought to be materially correct, their accuracy cannot be guaranteed and they do not form part of any contract**.**



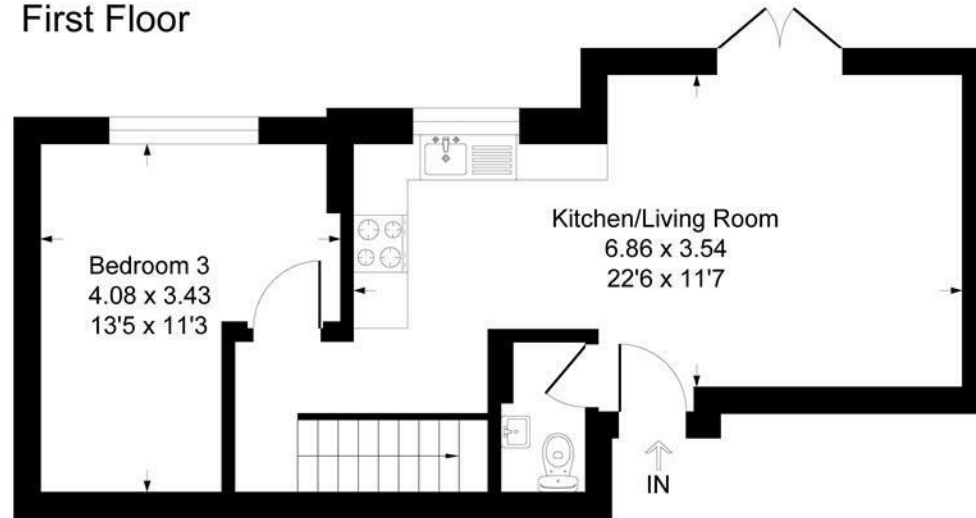


Windermere Close

Approximate Gross Internal Floor Area = 76.4 sq m / 822 sq ft



First Floor



Ground Floor

Illustration for identification purposes only, measurements are approximate, not to scale.