

SALES
242 Dedworth Rd
Windsor
Berkshire
SL4 4JR
Tel: 01753 621234
Email: post@horler.co.uk

SALES
1 Temple Cottage
The Green
Datchet, Berkshire
SL3 9BJ
Tel: 01753 546667
Email: mail@stephenuren.co.uk

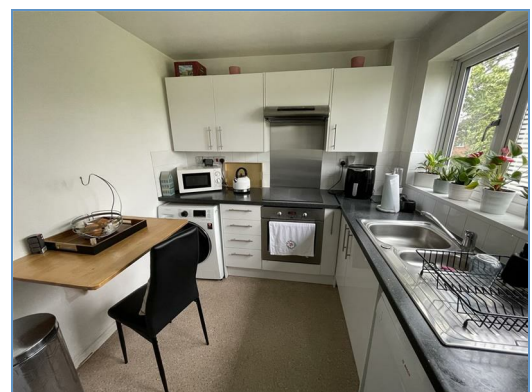


HORLER
Incorp. Stephen Uren



10 Cleves Court Firs Avenue, Windsor, SL4 4EF
£280,000

Nestled in the charming Firs Avenue of Windsor, this delightful two-bedroom, apartment in the sought-after Cleves Court development is now available for those seeking a comfortable and convenient living space.



Upon entering, you are greeted by a spacious reception room, perfect for entertaining guests or simply relaxing after a long day. The property boasts two generously sized bedrooms, ideal for creating your own personal sanctuary, along with a modern en-suite bathroom attached to the principal bedroom.

The well-equipped kitchen adds a touch of elegance to the apartment, making meal preparation a joy rather than a chore. Situated just off the popular Hatch Lane, this property offers unparalleled access to local schools, transportation links, and amenities, ensuring that everything you need is within easy reach.


With the added benefit of no onward chain, this apartment presents a fantastic opportunity for those looking to make a hassle-free move into a lovely home. Don't miss out on the chance to make this wonderful property your own in the heart of Winds

General Information:

Lease length remaining: 190 years from 26th September 2012
 Service Charge: £2,431.33 per Annum
 Ground Rent: Nil

Legal Note:

Although these particulars are thought to be materially correct, their accuracy cannot be guaranteed and they do not form part of any contract.

Energy Efficiency Rating		
	Current	Potential
Very energy efficient - lower running costs (92 plus) A		
(81-91) B		
(69-80) C		
(55-68) D		
(39-54) E		
(21-38) F		
(1-20) G		
Not energy efficient - higher running costs		
	81	81
	EU Directive 2002/91/EC 	

Environmental Impact (CO ₂) Rating		
	Current	Potential
Very environmentally friendly - lower CO ₂ emissions (92 plus) A		
(81-91) B		
(69-80) C		
(55-68) D		
(39-54) E		
(21-38) F		
(1-20) G		
Not environmentally friendly - higher CO ₂ emissions		
	EU Directive 2002/91/EC 