



**8, Maple Court St. Leonards Road, Windsor, SL4 3EE**  
**£350,000**

 **HORLER**

**8, Maple Court St. Leonards Road, Windsor, SL4 3EE**

If you are looking for a spacious, light and airy two bedroom, first floor apartment within close proximity of Windsor Town Centre with off road parking and a garage - we have the property for you!  
To arrange a viewing please call 01753 621234 without delay



### **General Information**

Lease remaining 74 yrs - a lease extension is offered upon completion

Service Charge £528 per quarter

Council Tax Band 'C'

### **Legal Note**

\*\*\*Although these particulars are thought to be materially correct their accuracy cannot be guaranteed and they do not form part of any contract\*\*\*.

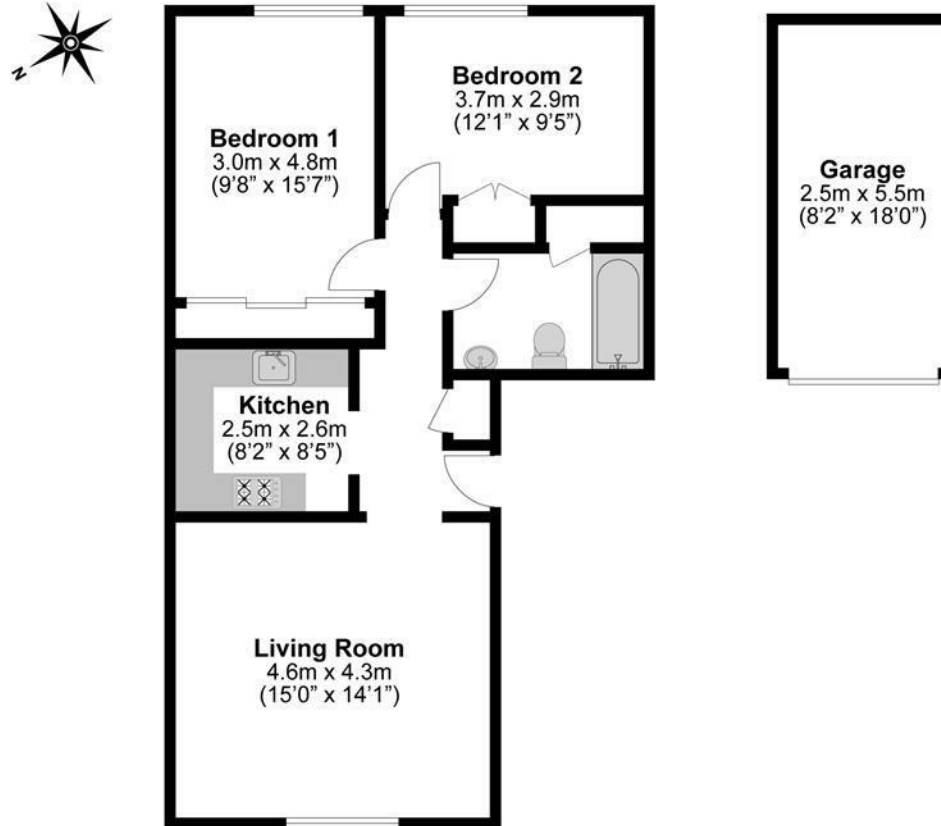




NO PARKING IN  
OR NEARBY  
OF YELLOW ZONE  
PENALTY  
£100  
UNLESS  
EXEMPTED BY  
SIGN

**Total Approximate Floor Area**

936 Square feet  
87 Square metres



**Illustrations are for identification purposes only,  
measurements are approximate, not to scale.**