



18 Woodland Avenue, Windsor, SL4 4AG
£895,000

 **HORLER**

18 Woodland Avenue, Windsor, SL4 4AG

An incredibly rare opportunity to acquire this beautifully presented four bedroom family home located at the very end of this prestigious Cul de sac in Windsor.

Ideal for those looking to find a property with heaps of potential as the property has planning permission granted to create someone's forever home.

With a south east facing garden that extends in the region of 120 feet and with Summer ahead of us why not book your viewing today to see for yourselves what this tremendous property has to offer.



Woodland Avenue, Windsor

Nestled in the very the end of this prestigious cul de sac in Windsor, A charming family home offers a rare opportunity to own a piece of tranquillity. Boasting two inviting reception rooms and four bedrooms, this property exudes modern living with light and airy accommodation combined perfectly with warmth and character within its retained period features.

The real gem of this home lies beyond its walls - a stunning south-east facing garden stretching approximately 130 feet. Imagine summer days spent hosting delightful gatherings in the purpose-built BBQ area or relaxing under the oak gazebo. This outdoor oasis is a true extension of the living space, perfect for creating lasting memories with loved ones.

For those with grander visions, this property comes with planning permission for further expansions, allowing you to tailor this already beautiful home into your dream property. The potential is limitless, making this a rare find in the sought-after Windsor area.

Conveniently located near esteemed schools such as St. Edwards, Oakfield, and Clewer Green, this home offers not just a tranquil retreat but also a practical lifestyle for families. Don't miss the chance to explore the endless possibilities this property holds - book a viewing today and step into the future of your dream home.

Legal Note.

Although these particulars are thought to be materially correct their accuracy cannot be guaranteed and and they do not form part of any contract.

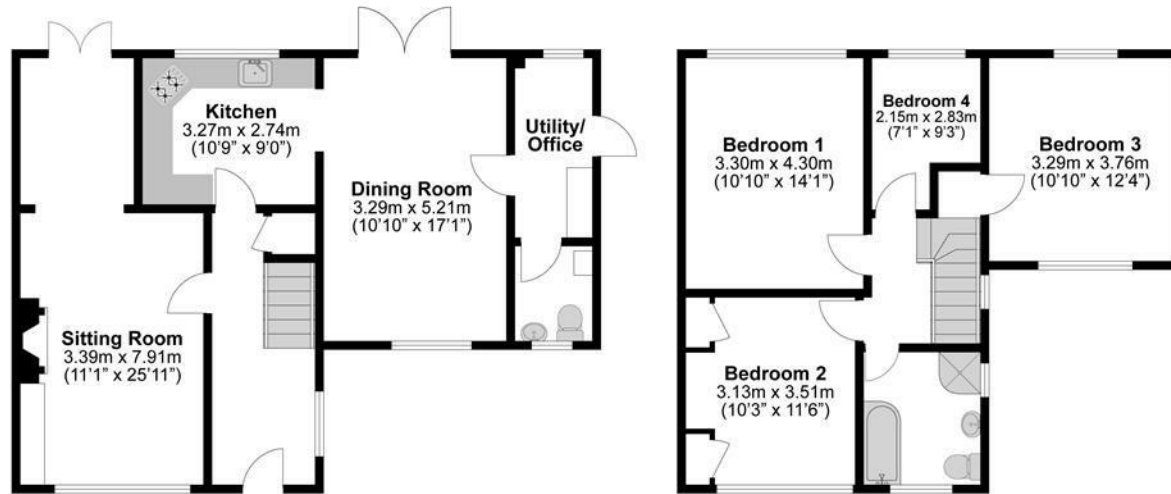




Total Approximate Floor Area

1366 Square feet

127 Square metres



**Illustrations are for identification purposes only,
measurements are approximate, not to scale.**