



15 East Crescent, Windsor, Berkshire, SL4 5LD  
£485,000

 **HORLER**

## 15 East Crescent, Windsor, Berkshire, SL4 5LD

Brought to the market is this mid terrace house located to the west of Windsor and close to local amenities, schools and transport links. The property boasts two reception rooms, 2 good sized bedrooms, washroom and family bathroom and to the rear a secluded garden laid mostly to lawn with a patio and wooden shed, side access from the driveway and off street parking at the front of the property for 2 vehicles.

Call today on 01753 621234 for immediate viewings.



**Entrance.**

Through the partially glazed front door to porch with built in storage, entry to living room and staircase to first floor.

**Family room/ living room.**

Front aspect UPVC double glazed windows, wooden flooring, radiator, tv and power points.

**Kitchen/ dining room.**

With a range of eye and base level units, electric hob with built in extractor fan, space for a free standing fridge freezer, laminate flooring, leading on to the dining room with Velux windows, power points, space for freestanding furniture, , and rear aspect UPVC double glazed bifold doors.

**Utility room.**

With built in storage space, insert sink, space for free standing washing machine or dryer and power points.

**Washroom**

Low level WC with wash hand basin.

**Bedroom 1.**

Front aspect UPVC double glazed windows, radiator and space for freestanding bedroom furniture.

**Bedroom 2.**

Rear aspect UPVC double glazed windows with radiator, power points and space for freestanding bedroom furniture.

**Family bathroom.**

Rear aspect frosted UPVC double glazed windows, fitted bath, low level WC, wash hand basin with open storage underneath, fully tiled floor and partially tiled walls.

**Garden.**

With a paved patio adjacent to the property, a secluded garden with wooden fence surround, laid mostly to lawn and timber shed to the rear.

**Front of property.**

Paved drive way with off street parking for 2 vehicles.

**General Information**

Council Tax Band 'C'

**Legal note.**

\*\*Although these particulars are thought to be materially correct, their accuracy cannot be guaranteed and they do not form part of any contract\*\*.





# East Crescent SL4

Approximate Gross Internal Floor Area = 92.8 sq m / 999 sq ft

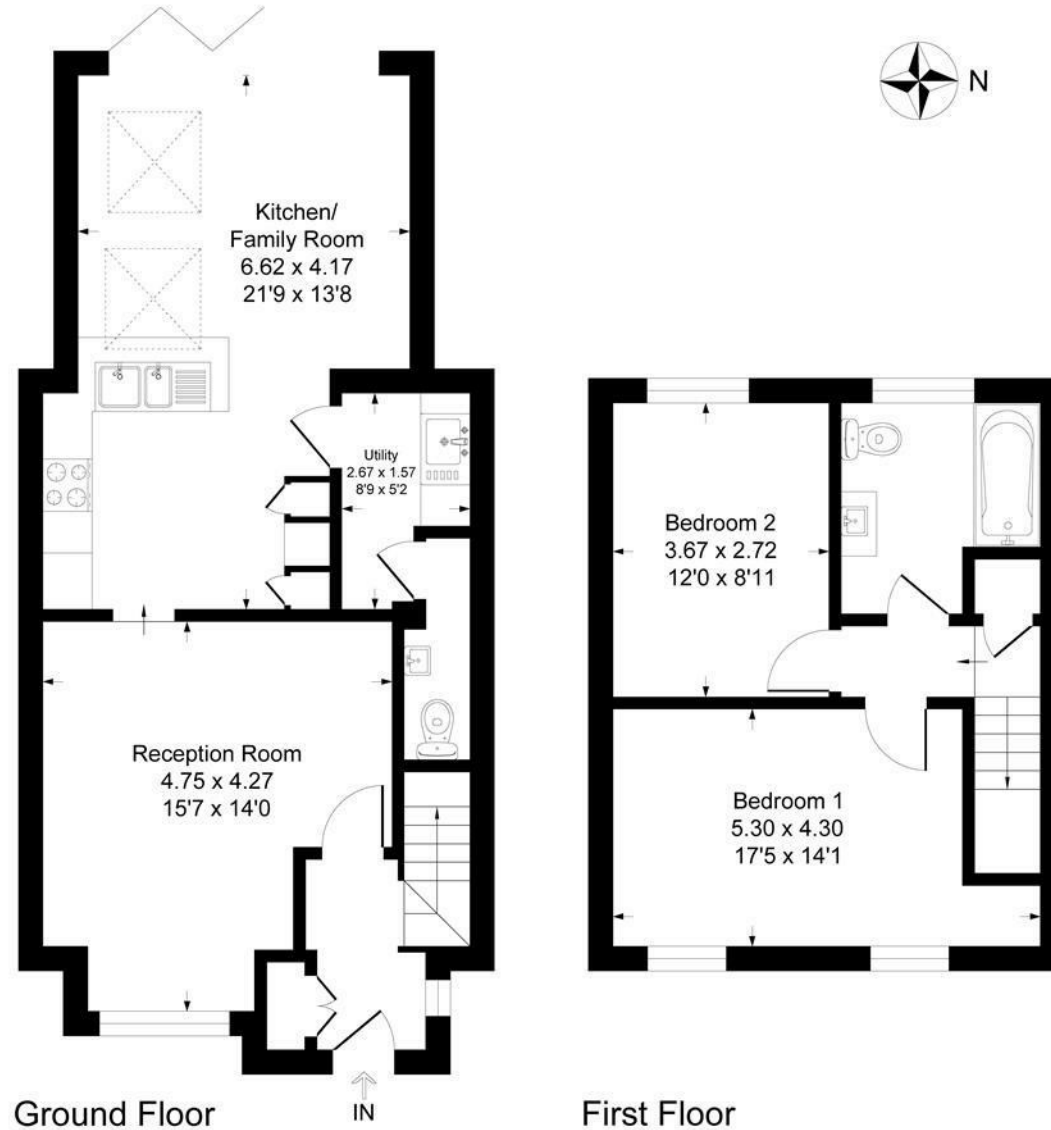


Illustration for identification purposes only, measurements are approximate, not to scale.  
Produced By Esjay Property Marketing