



41 Luff Close, Windsor, SL4 4NP
£435,000

 **HORLER**

41 Luff Close, Windsor, SL4 4NP

Welcome to Luff Close, Windsor. As you step inside, you are greeted by a spacious lounge, perfect for relaxing or entertaining guests. The kitchen dining room at the back is a wonderful space for creating delicious meals and enjoying them with loved ones. With doors leading out to the garden, you can easily extend your living space outdoors during the warmer months.



Property Description.

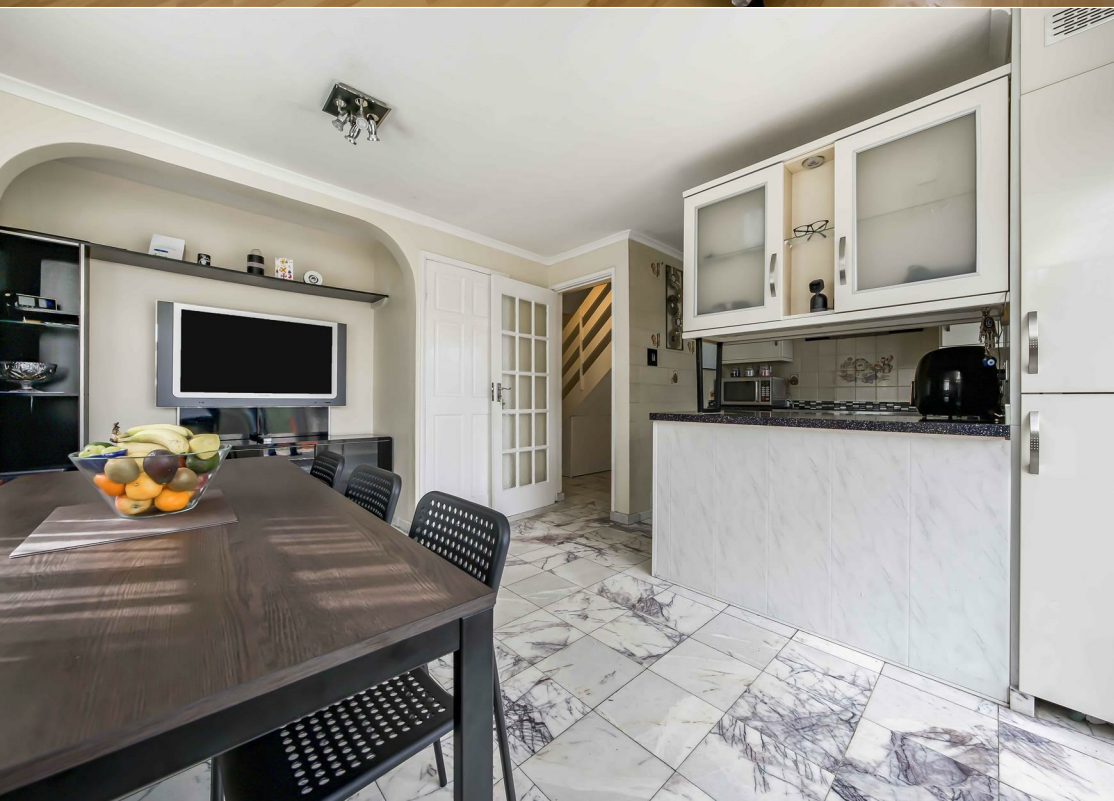
Welcome to Luff Close, Windsor. As you step inside, you are greeted by a spacious lounge, perfect for relaxing or entertaining guests. The kitchen dining room at the back is a wonderful space for creating delicious meals and enjoying them with loved ones. With doors leading out to the garden, you can easily extend your living space outdoors during the warmer months.

This property boasts three double bedrooms, providing ample space for a growing family or for those who enjoy having a guest room or home office. The additional space to the side of the house offers potential for various uses - perhaps a cosy reading nook, a play area for children, or even a small garden to cultivate your green thumb.

Situated in an elevated part of Windsor, you can enjoy lovely views and a sense of tranquillity. The location offers a perfect blend of peaceful surroundings while still being conveniently close to local amenities and transport links.

Don't forget the added bonus of extra storage space, making it easier to keep your home organised and clutter-free.

If you are looking for a property that combines comfort, convenience, and potential, then this house on Luff Close is definitely worth considering. Book a viewing today and envision the possibilities that this lovely home has to offer!





Luff Close SL4

Approximate Gross Internal Floor Area = 90.5 sq m / 975 sq ft

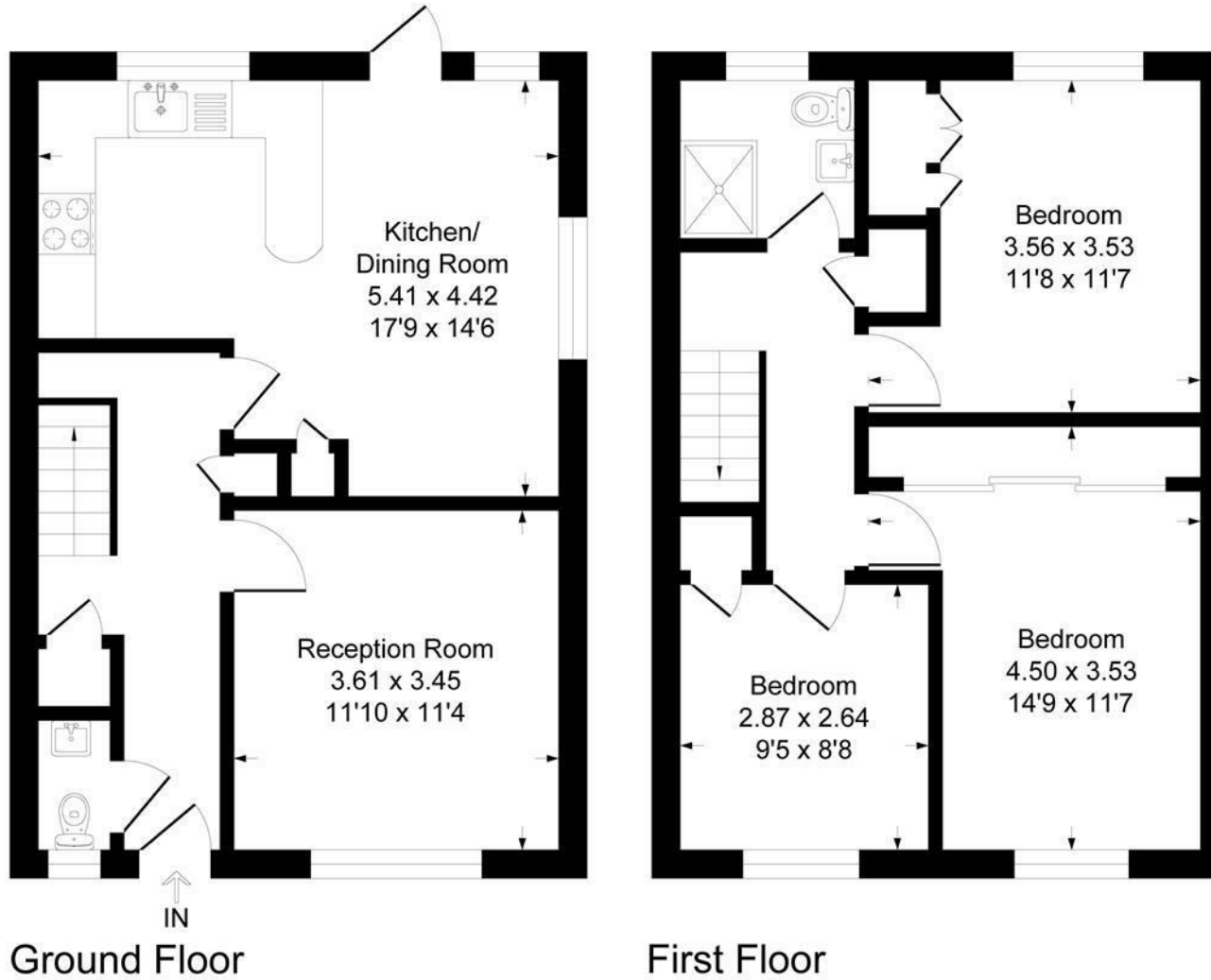


Illustration for identification purposes only, measurements are approximate, not to scale.
Produced By Esjay Property Marketing