

SALES
242 Dedworth Rd
Windsor
Berkshire
SL4 4JR
Tel: 01753 621234
Email: post@horler.co.uk

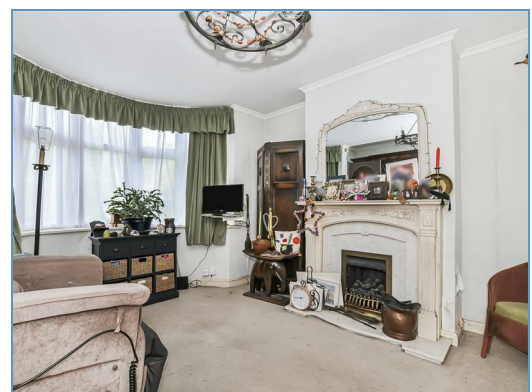
SALES
1 Temple Cottage
The Green
Datchet, Berkshire
SL3 9BJ
Tel: 01753 546667
Email: mail@stephenuren.co.uk



HORLER
Incorp. Stephen Uren



125 Dedworth Road, Windsor, SL4 5BB
Offers in excess of £500,000



Dedworth Road, Windsor.

Welcome to Dedworth Road, Windsor - a fabulous and convenient location for this three-bedroom semi-detached house. This property boasts two reception rooms, perfect for entertaining guests or simply relaxing with your loved ones. With two bathrooms, ideal for larger families and guests.

The house features a large south-facing rear garden, ideal for enjoying sunny afternoons or hosting summer barbecues. Imagine the possibilities this space holds for gardening enthusiasts or families looking for a safe outdoor area for children to play.

One of the standout features of this property is the potential it offers for further extension, just like the neighbouring properties. Whether you dream of a spacious kitchen, a home office, or an additional bedroom, this house provides a canvas for you to create the home of your dreams.

Convenience is key with off-road parking available for two cars, ensuring you never have to worry about finding a parking space after a long day. Dedworth Road is a sought-after location, within easy reach of local amenities, fantastic schools and transport links.

Don't miss out on the opportunity to make this house your home and unlock its full potential. Book a viewing today and start envisioning the life you could build in this wonderful property in Windsor

Energy Efficiency Rating		Environmental Impact (CO ₂) Rating			
	Current	Potential		Current	Potential
<i>Very energy efficient - lower running costs</i>					
(92 plus) A			<i>Very environmentally friendly - lower CO₂ emissions</i>		
(81-91) B			(92 plus) A		
(69-80) C			(81-91) B		
(55-68) D			(69-80) C		
(39-54) E			(55-68) D		
(21-38) F			(39-54) E		
(1-20) G			(21-38) F		
<i>Not energy efficient - higher running costs</i>					
England & Wales		EU Directive 2002/91/EC	England & Wales		EU Directive 2002/91/EC

