



Apartment 20, Castle View Retirement Village Helston Lane, Windsor, SL4 5GG
£350,000

 **HORLER**

Apartment 20, Castle View Retirement Village Helston Lane, Windsor, SL4 5GG

Listed to the market a roomy one bedroom first floor apartment in the ever popular Castle View retirement Village.

Offered for resale although refurbished to its original condition an East facing apartment with Views towards Windsor Castle and the River Thames.

The apartment benefits from light and airy living accommodation, with doors leading to a private balcony, an open plan kitchen with top of the range fitted appliances, a large bedroom with fitted wardrobes and a Jack and Gill bathroom suite and of course 24/7 access to Castle Views award winning communal facilities.

Number 20 also has the benefit of being available with an allocated underground parking space which are not readily available.

Call today to arrange to visit the Castle View development or take advantage of popping by to one of the Easter Open Days.



Summary.

Listed to the market a roomy one bedroom first floor apartment in the ever popular Castle View retirement Village.

Offered for resale although refurbished to its original condition an East facing apartment with Views towards Windsor Castle and the River Thames.

The apartment benefits from light and airy living accommodation, with doors leading to a private balcony, an open plan kitchen with top of the range fitted appliances, a large bedroom with fitted wardrobes and a Jack and Gill bathroom suite and of course 24/7 access to Castle Views award winning communal facilities.

Number 20 also has the benefit of being available with an allocated underground parking space which are not readily available.

Call today to arrange to visit the Castle View development or take advantage of popping by to one of the Easter Open Days.

Entrance

Enter the development through the main entrance to the reception area and lobby with an elevator/staircase to the first floor of the building and a corridor leading to your own front door.

Hallway

With access to the open plan kitchen/living/dining room, bedroom and bathroom with multiple storage units and one containing a washing machine and tumble dryer, and a range of baselevel power points.

Kitchen/Living/Dining Room

With a front aspect private balcony overlooking West Windsor, a fully integrated kitchen with a range of eye and base level units, complementary work surface, mid level oven, microwave, induction hob with overhead extractor fan, fridge/freezer, inset kitchen sink with mixer tap and mid level power points. Moving into the open plan living/dining room with a feature fireplace with surround, radiator and further mid level power points.

Bedroom

With a front aspect UPVC double glazed window, integrated storage units with hanging space, wall mounted radiator and mid level power points.

Bathroom

A Jack and Jill bathroom with dual entry from the bedroom and the hallway, a generously sized walk in shower cubicle with glass surround, low level wc, wall hung mid level wash hand basin situated below large mirrored door vanity units and a heated towel rail

General Information

Castle View Windsor is a retirement village in the heart of Windsor which offers residents safety, security and complete peace of mind. Independent lifestyle apartments provide premium quality homes for the over 55s with exceptionally high standard facilities creating a real sense of community with a wide range of activities. The facilities include the beautiful Sky Lounge with seating area and stunning view of Windsor Castle, extensive ground floor lounge, restaurant and bar, library, secure underground car park available to residents and visitor parking close to the main entrance. COUNCIL TAX BAND 'D'

Lease 250 years

Ground Rent £400 per year

Service charge: £5,852 fixed for 5 years 2028

Legal Note

Although these details are thought to be materially correct their accuracy cannot be guaranteed and they do not form part of any contract.





Castle View SL4

Approximate Gross Internal Floor Area = 59.0 sq m / 635 sq ft

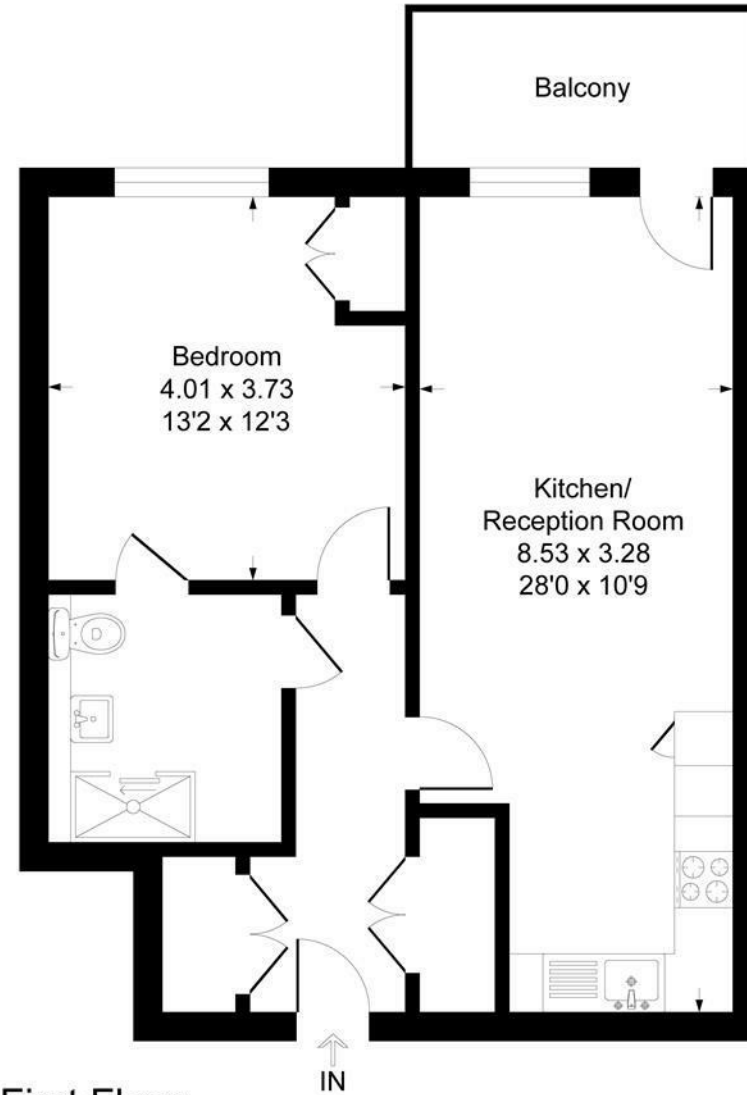


Illustration for identification purposes only, measurements are approximate, not to scale.
Produced By Esjay Property Marketing