



Apt 1, Crown Jules House Charles Street, Windsor, Berkshire, SL4 5DS
£325,000

Apt 1, Crown Jules House Charles Street, Windsor, Berkshire, SL4 5DS

****NO ONWARD CHAIN****

Prime by Horler are delighted to offer to the market a beautifully presented one bedroom, ground floor apartment located in the heart of Windsor. The property boasts a generously sized double bedroom, large shower room, character features throughout and spacious kitchen diner and living room.

Being located in the heart of the town, you can enjoy all that Windsor has to offer on your doorstep with walking distance to a large range of amenities, restaurants and transport links.

Viewings are highly recommended so call today on 01753 62.1234 to book yours!



Entrance:

Enter through a composite communal front door leading into communal hallway with private front door, leading you into:

Livingroom:

With a dual side and rear aspect metal framed double glazed windows, tiled flooring throughout, wall mounted radiator, utility cupboard, storage unit and a range of low level tv and power points.

Kitchen:

With a side aspect metal framed double glazed window, inset basin with hot and cold mixer tap and complementary drainage board , electric hob with extractor fan above, integrated appliances such as washing machine, dishwasher, oven, a range of base and eye level storage units and mid level power points.

Bedroom:

With a rear aspect metal framed double glazed window, wall mounted radiator, tiled floor, a range of base level and mid level power points.

Bathroom:

With a large walk in shower, wash hand basin situated on a vanity storage unit with hot and cold mixer tap, eye level vanity unit with mirrored doors, low level wc, chrome wall mounted towel rail, tiled flooring and large storage unit.

General Information:

Lease length remaining: Approx. 117 years remaining
Council tax banding: C

Legal Note:

Although these particulars are thought to be materially correct, their accuracy cannot be guaranteed and they do not form part of any contract.






Oxfam
Donation
drop off
point
Please ring bell



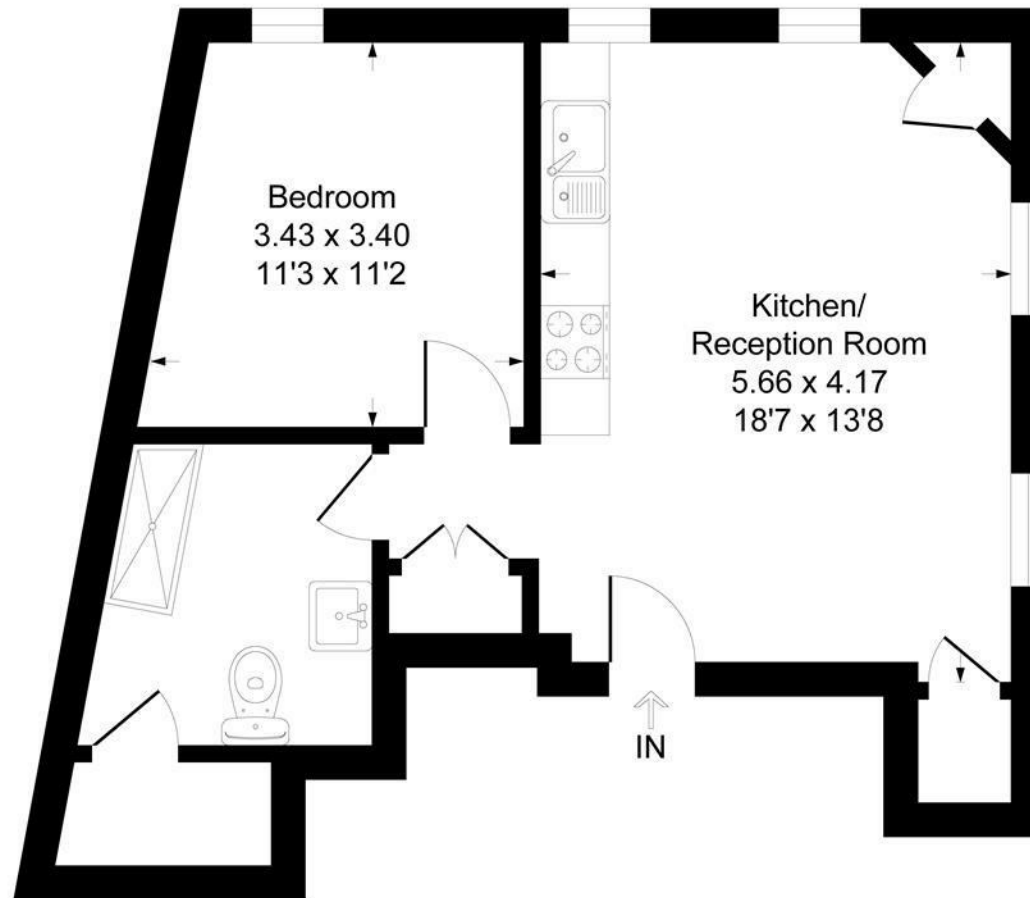

CROWN JULES
HOUSE



The Frost Partner

Charles Street SL4

Approximate Gross Internal Floor Area = 46.2 sq m / 497 sq ft



Ground Floor

Illustration for identification purposes only, measurements are approximate, not to scale.
Produced By Esjay Property Marketing