



65 Peascod Street, Windsor, SL4 1DE
Asking price £575,000

 **HORLER**

65 Peascod Street, Windsor, SL4 1DE

With an impressive granite shop front facade we have pleasure in bringing to the market a commercial/residential property including a 2 bedroom apartment situated in the heart of Windsor Town Centre comprising a downstairs showroom, kitchen and washrooms with rear access to your own secluded courtyard and staircase to apartment set over a further two floors with a sitting room, kitchen and bathroom on the first floor and two double bedrooms on the top floor.

For viewings please call 01753 621234 today.



Entrance

A shop front marble facade with display windows on either side and toughened glass door leading to the interior.

Commercial Unit

With built in display cases on either side and rear of the room, double radiator and doorway to kitchen.

Kitchen

With a number of eye and base level units and kitchen sink, space for freestanding kitchen appliances, laminate flooring, doorway to washrooms, rear aspect windows and wooden door leading to courtyard.

2 x Cloakrooms

2 washrooms with low level wcs.

Courtyard

Fully enclosed courtyard with outside staircase leading to first floor apartment

Reception Room

With front aspect UPVC double glazed window overlooking Peascod Street, double radiator and power points.

Kitchen

With a number of eye and base level units and space for freestanding kitchen appliances.

Bathroom

With rear aspect double glazed window, fitted bath, wash hand basin and low level wc.

Bedroom 1

Front aspect UPVC double glazed window, power points, feature period fireplace.

Bedroom 2

Rear aspect UPVC double glazed window, fitted wardrobe, power points and feature period fireplace.

General Information

Legal Note

Although these particulars are thought to be materially correct their accuracy cannot be guaranteed and they do not form part of any contract.



Peascod Street

Approximate Gross Internal Floor Area = 101.6 sq m / 1094 sq ft

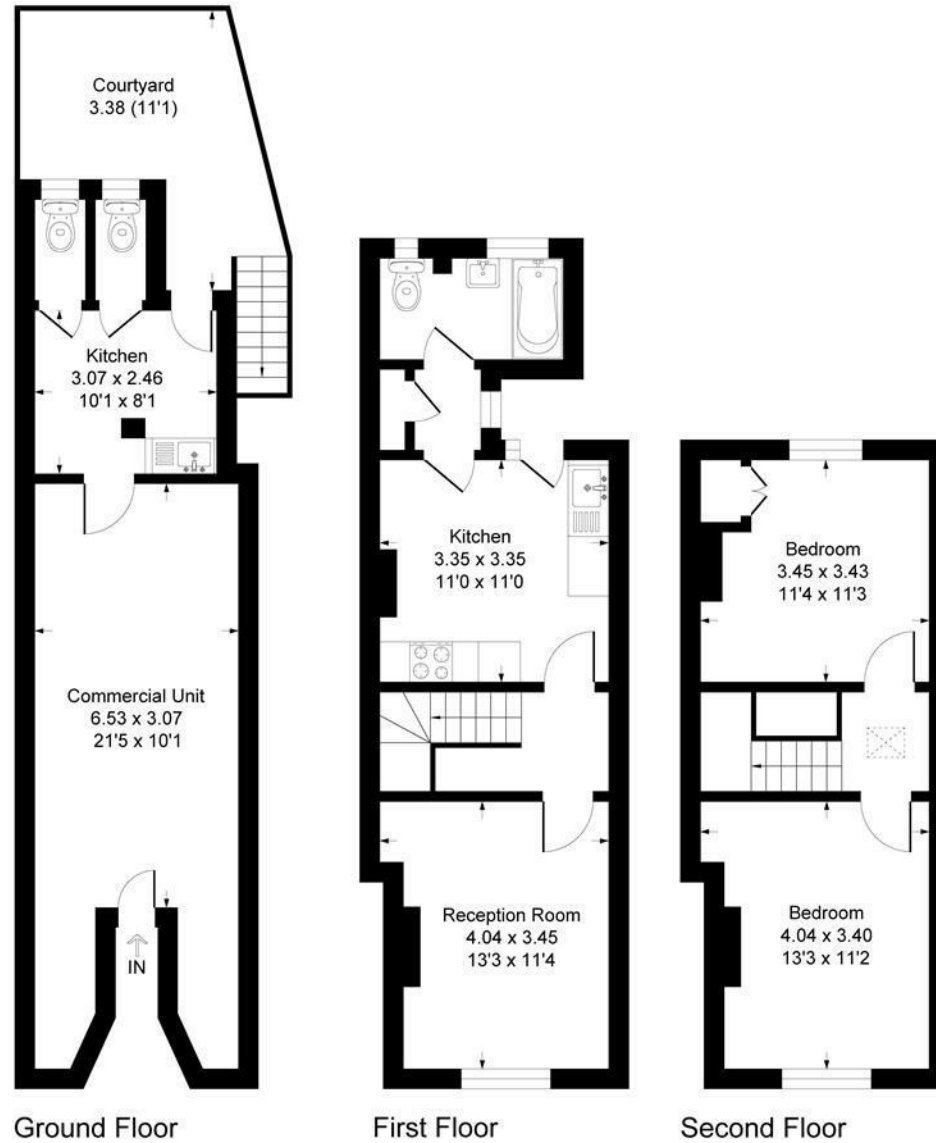


Illustration for identification purposes only, measurements are approximate, not to scale.
Produced By Esjay Property Marketing