



17a Rydings, Windsor, Berkshire, SL4 4HF
£375,000

 **HORLER**

17a Rydings, Windsor, Berkshire, SL4 4HF

****NO ONWARD CHAIN****

A two double bedroom semi detached home being finished to a high standard throughout offering open plan living and downstairs cloakroom, upstairs has two double bedrooms and family bathroom and private rear gardens. Conveniently situated for local amenities, transport links and catchment areas. For viewings please call 01753 621234



Entrance

Through a UPVC double glazed door into hallway.

Entrance Hallway

With wood flooring, under-stair storage, stairs leading to first floor and doorway to kitchen/living room and downstairs washroom.

Downstairs WC

With front aspect frosted double glazed window, radiator, wall mounted vanity wash hand basin with storage and low level WC.

Open plan: Kitchen/Living room

Rear dual aspect UPVC double glazed windows and door leading to back garden; a kitchen with eye and base level units with complementary work surface, inset sink and drainer with mixer taps, range of integrated appliances including electric hob, oven and extractor above, dishwasher, fridge freezer and washer dryer. Laminate wood flooring, spotlights, power points and radiator.

Bedroom 1

A rear aspect double bedroom with a UPVC double glazed window, radiator, and ample power points.

Bedroom 2

A rear aspect bedroom with a UPVC double glazed window, radiator, and ample power points.

Family Bathroom

A partly tiled bathroom with rear aspect frosted UPVC double glazed window, a three piece white suite with panel enclosed bath, heated towel rail, wall mounted low level WC and vanity sink with mirror above.

Garden

A timber fence enclosed private garden with a paved patio area directly behind the property, wooden garden shed and laid mostly to lawn.

Legal note

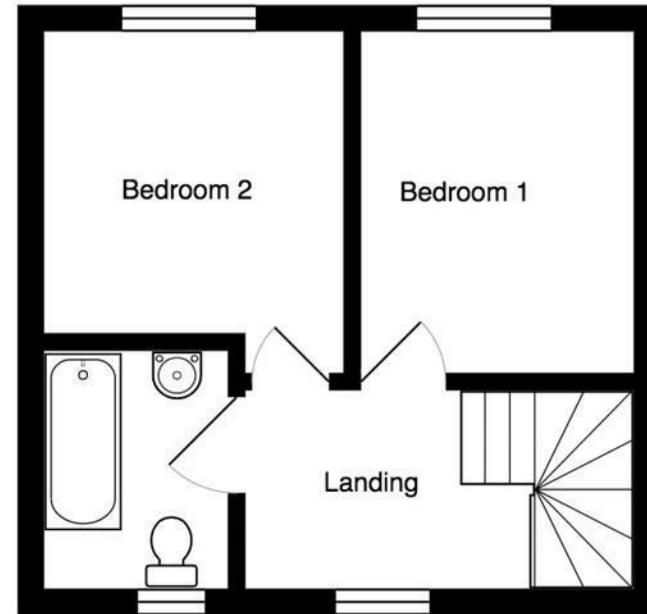
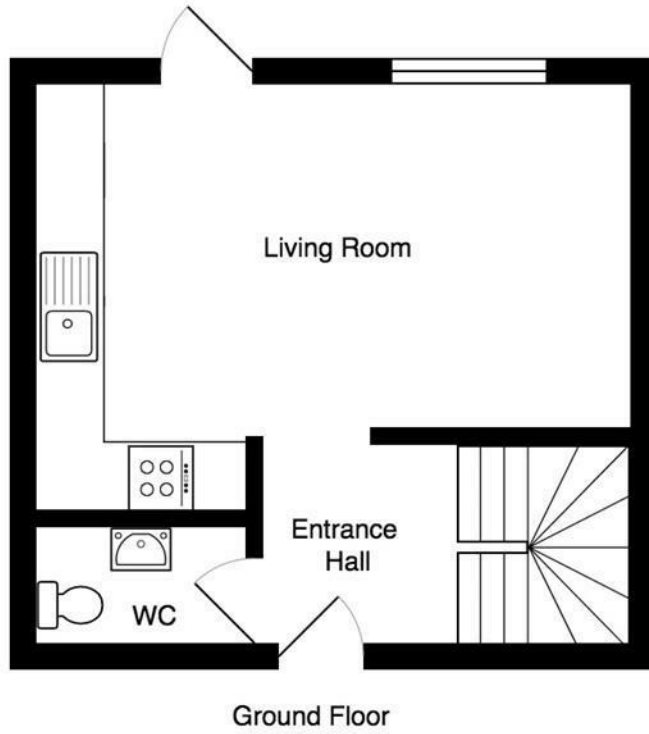
****Although these particulars are thought to be materially correct, their accuracy cannot be guaranteed and they do not form part of any contract.****

General Information

Council Tax Band 'C'







All measurements are approximate and for display purposes only.