

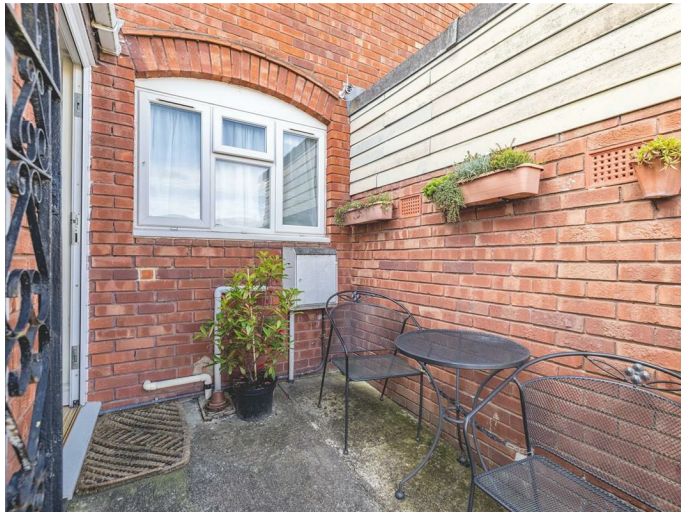


2 Keeler Close, Windsor, Berkshire, SL4 4NL
£225,000

 **HORLER**

2 Keeler Close, Windsor, Berkshire, SL4 4NL

A delightful one bedroom ground floor maisonette located in West Windsor with access to local amenities and transport links. This property offers good living accommodation comprising a combined living/dining room, double bedroom, fitted kitchen and bathroom. The property has also benefitted from converting the outbuilding to being an integral part of the home allowing for endless possibilities of use. In addition is a courtyard size front garden. For viewings please do not hesitate, call 01753 621234 today....



Entrance/Hall

Through wrought iron gate to courtyard with partially glazed UPVC door leading to extended hallway with laminate wood flooring, double radiator, three storage cupboards and doors to kitchen, living/dining room, bedroom and bathroom.

Kitchen

Front aspect UPVC double glazed window, oak laminate flooring, a range of eye and base level units with complementary work surface, Free standing electric cooker with a four ring gas hob above, space for freestanding washing machine, fridge/freezer; spotlights and power points.

Living/Dining Room

Rear aspect UPVC double glazed window, laminate flooring, tv and power points and double radiator.

Bedroom

Rear aspect UPVC double glazed window, fitted carpet, fitted wardrobe/storage and power points.

Family Bathroom

With front aspect UPVC frosted double glazed window, fitted bath with overhead shower and glass screen, pedestal wash hand basin, low level wc and tiled flooring.

Outside of Property

Communal open space laid to lawn

General Information

Lease Length: 90 years

Service Charge: April 22 to March 23 £201 PA

Ground Rent: £10 per year

Council Tax Band B

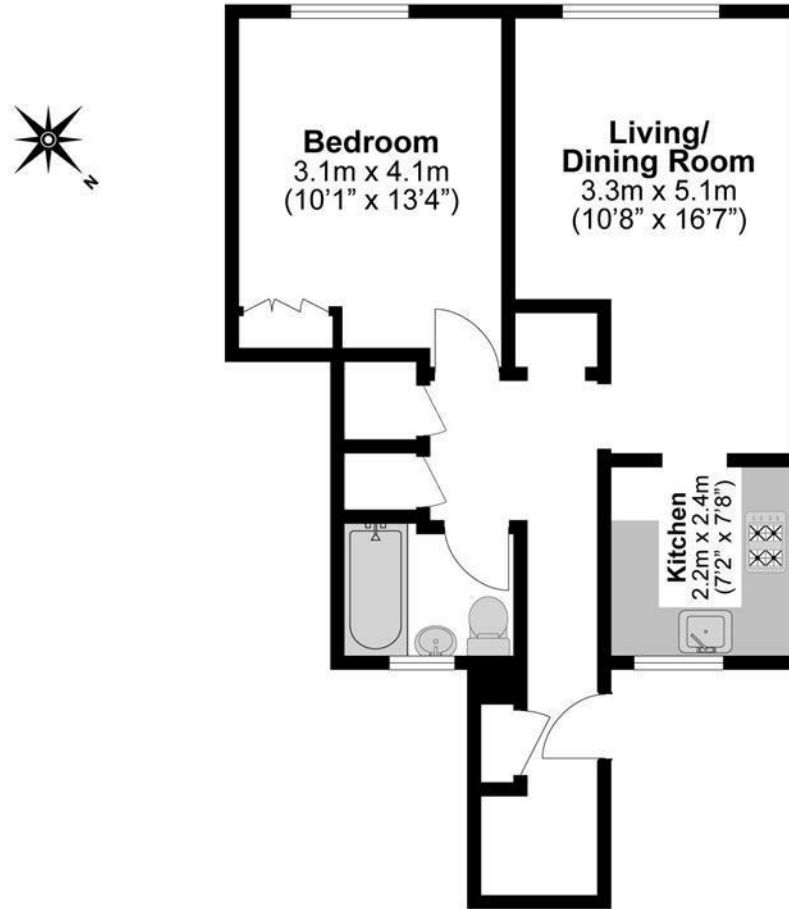
Legal Note

Although these particulars are thought to be materially correct, their accuracy cannot be guaranteed and they do not form part of any contract.





Total Approximate Floor Area
570 Square feet
53 Square metres



**Illustrations are for identification purposes only,
measurements are approximate, not to scale.**