



40 Prince Consort Cottages, Windsor, SL4 1JB
Offers in excess of £340,000

 **HORLER**

40 Prince Consort Cottages, Windsor, SL4 1JB

****NO ONWARD CHAIN****

Prime by Horler are delighted to be offering a piece of Windsor's history.

Offered to the market is a well presented, two bedroom mid-terraced cottage located in the heart of Windsor Town Centre. The property boasts a private, south facing courtyard, gally style kitchen and open plan living/dining room. Prince Consort Cottage offering walking distance to a range of transport links, amenities and local schooling.

Viewings are recommended so please contact us today to arrange yours



Entrance:

Enter through a black timber front door to which leads into:

Living Room:

With a front aspect timber framed window, wall mounted radiator, base level storage unit and floor to ceiling shelving, staircase leading to first floor and a range of base level TV and power points.

Kitchen:

With a side aspect timber framed window, inset metal sink with complementary drainage board, hot and cold mixer tap, appliance space for gas hob, fridge and freezer, washing machine, a range of base and eye level storage units, rear door leading out into private courtyard and mid level power points,

Bathroom:

With a rear aspect timber framed window, low level WC with mounted cistern, wash hand basin on a pedestal, panel enclosed bath with hot and cold mixer tap and shower head, eye level vanity storage unit with mirrored doors.

Bedroom 1:

With a front aspect timber framed window, wall mounted radiator, integral storage units with hanging space and low level power points.

Bedroom 2:

With a rear aspect timber framed window, integrated storage unit with hanging space, wall mounted radiator and low level power point

Garden:

with a south facing private courtyard

General Information:

Grade II listed

Service Charge: Approx.. £750 per annum

Council Tax: E

On street parking via local authority permits

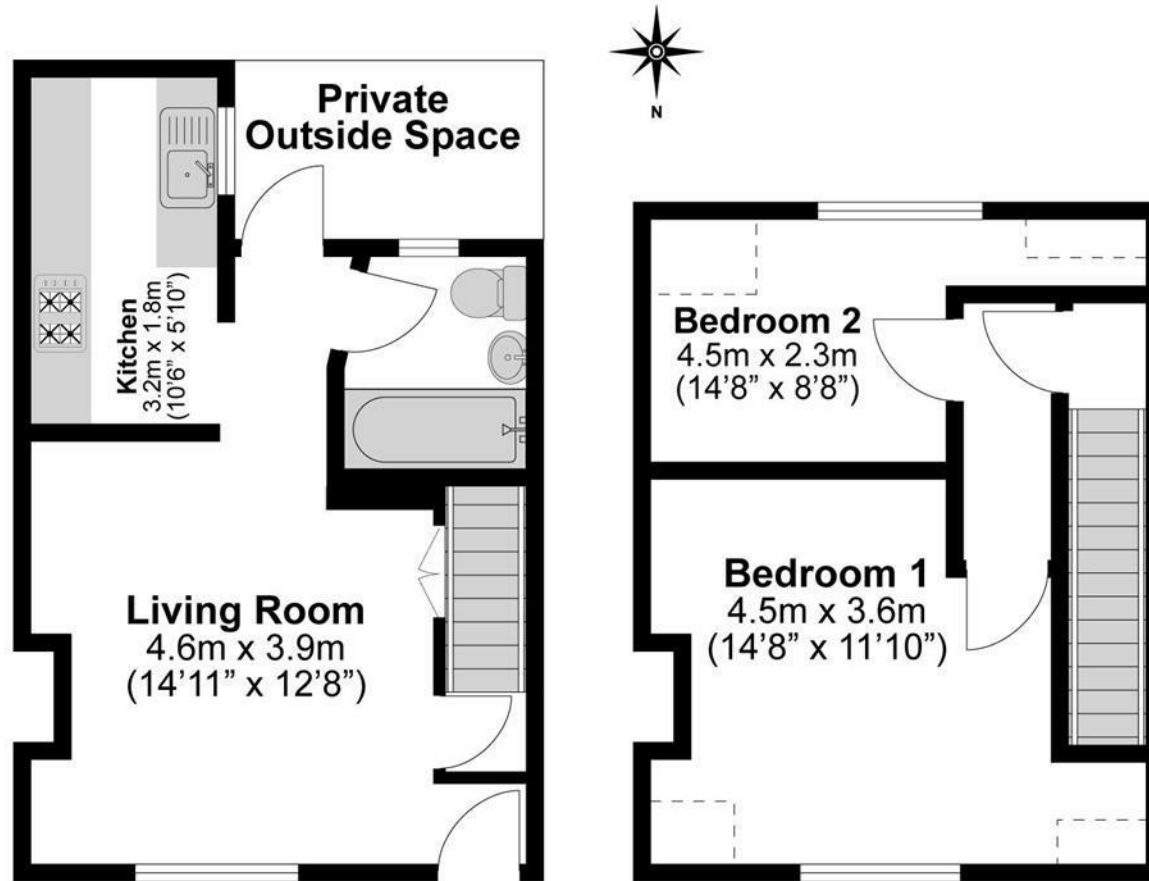
Legal Note:

Although these particulars are thought to be materially correct, their accuracy cannot be guaranteed and they do not form part of any contract.





Total Approximate Floor Area
576 Square feet
54 Square metres



**Illustrations are for identification purposes only,
measurements are approximate, not to scale.**