

PARSONS
COMPANY



3 The Sidings Southend, Dereham, NR19 1FA
£375,000



3 The Sidings Southend, Dereham, NR19 1FA

£375,000

This spacious and well presented detached bungalow is located within walking distance of the High Street and is offered for sale with no chain.

From the 'L' shaped entrance hall, you enter the kitchen/breakfast room which has fitted base and wall cupboards with integral appliances and space for table and chairs. There is a utility room with window overlooking the front garden and door to the side. The lounge is double aspect with French doors to the outside.

The main bedroom has the benefit of built-in wardrobes together with an en-suite shower room. There are two further double bedrooms which are serviced by a bathroom.

Outside, the property has a brick weave driveway which leads to a garage (with personal door to the garden). The front garden is laid to lawn with a path to the front door. The rear/side garden is mainly laid to lawn with a sandstone patio area, together with a shed and raised flower/vegetable beds.

For room measurements please click on the floor plan option.

Services

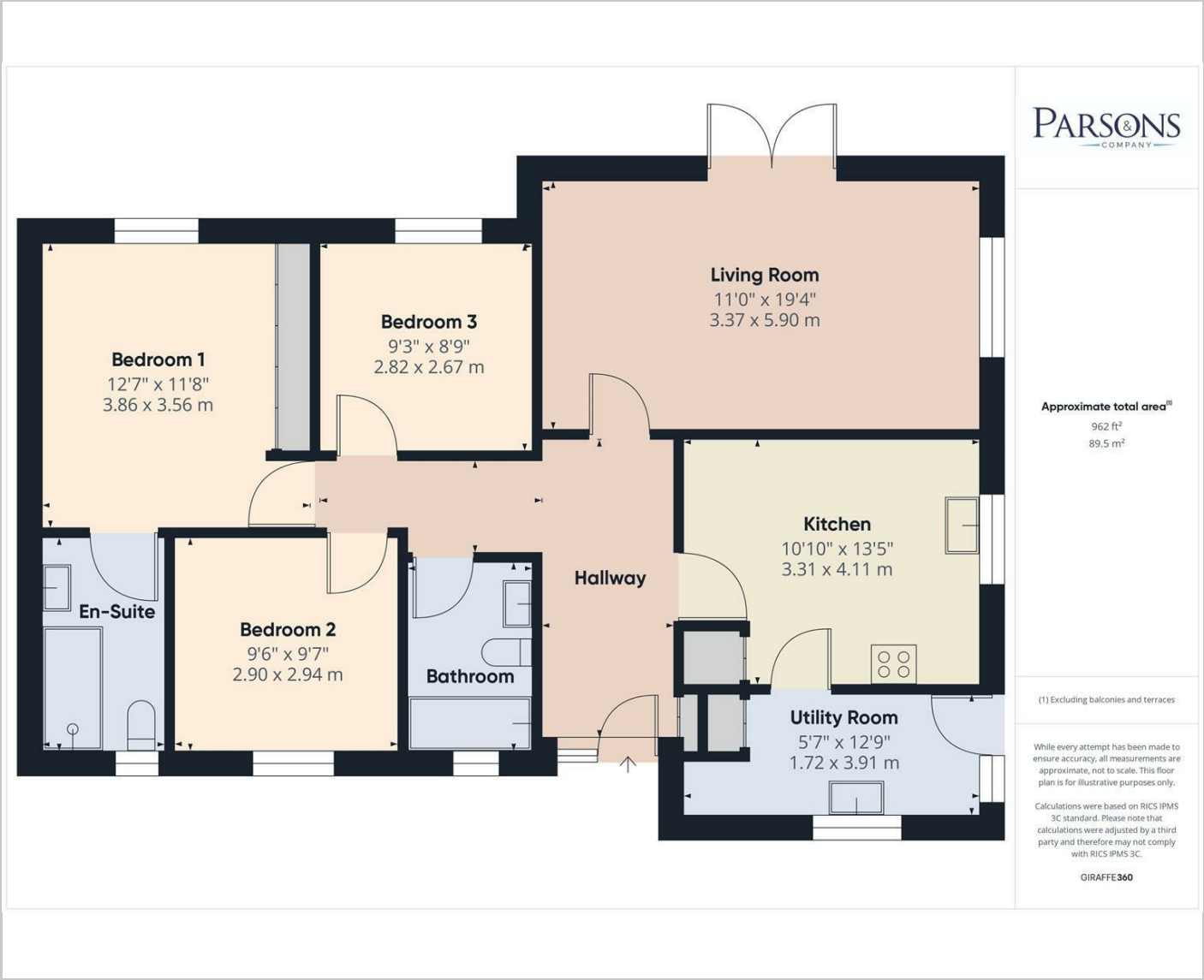
Description

Situation

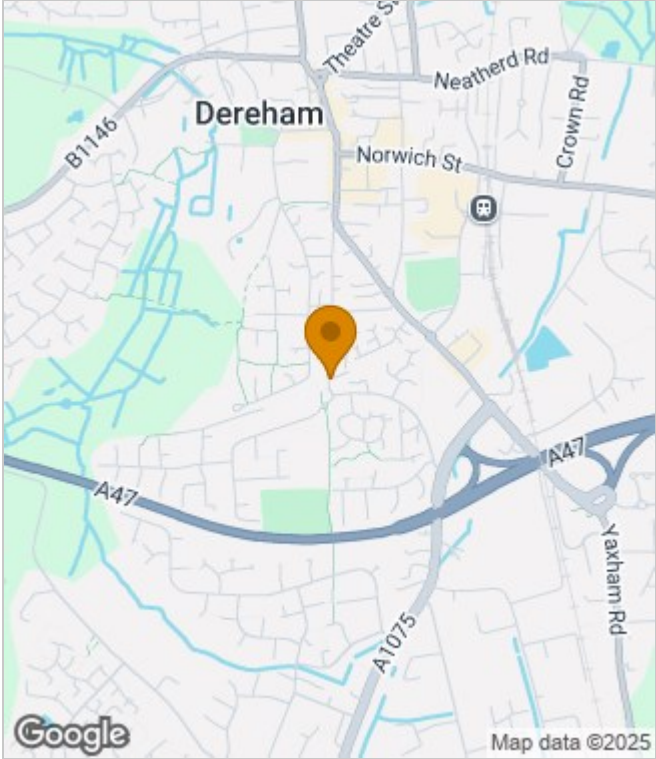
null
Council Tax Band: D
Available:



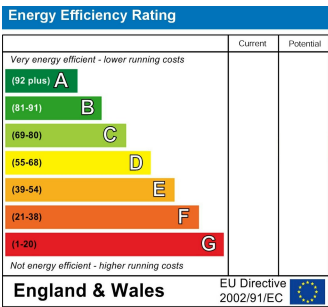
Floor Plans



Area Map



Energy Performance Graph



These particulars, whilst believed to be accurate are set out as a general outline only for guidance and do not constitute any part of an offer or contract. Intending purchasers should not rely on them as statements of representation of fact, but must satisfy themselves by inspection or otherwise as to their accuracy. No person in this firms employment has the authority to make or give any representation or warranty in respect of the property.