

PARSONS
— COMPANY —



22 Wensum Drive, North Elmham, Dereham, NR20 5HL
£190,000



22 Wensum Drive, North Elmham, Dereham, NR20 5HL

£190,000

Guide Price £190,000 to £210,000 An ideally situated two-bedroom semi-detached bungalow set within the sought-after village location of North Elmham. This property is ideal for someone who is looking to downsize.

As you enter the property there is a separate entrance hall that leads to a living room to the front, this room also consists of a chimney breast and space for a table. There is also a kitchen to the rear with various fitted and freestanding units. Further on, are the two bedrooms, with bedroom one benefitting from a fitted wardrobe with curtain, these rooms are serviced by a shower room suite with mains shower.

Outside, to the front, is an enclosed garden area with laid shingles and footpath plus access to side. To the rear, is a secluded garden with patio, laid to lawn grass and oil tank. There is also vehicle access to a garage that also provides off-street parking.

For room measurements please click on the floor plan option.

[Location](#)

Description

Situation

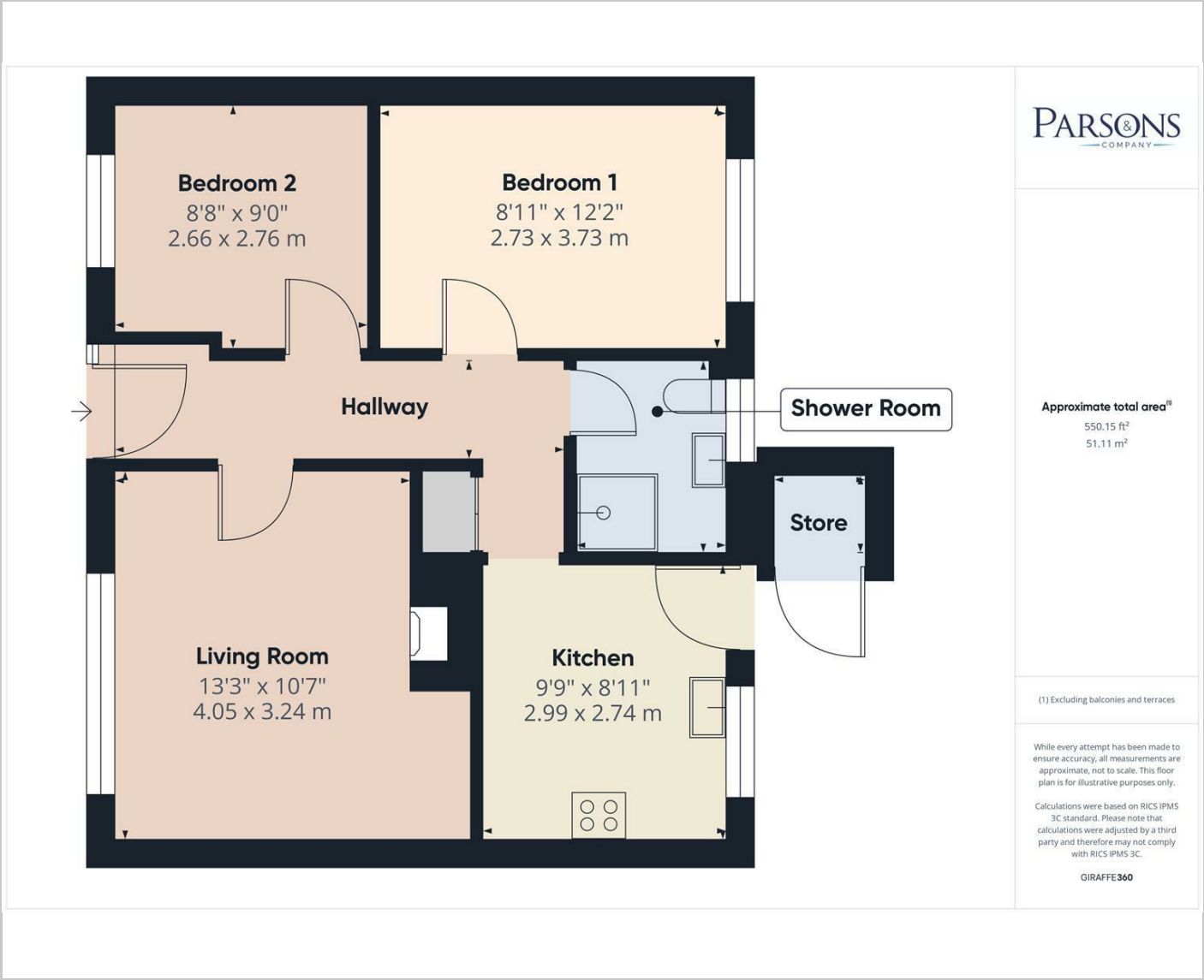
null

Council Tax Band: B

Available:



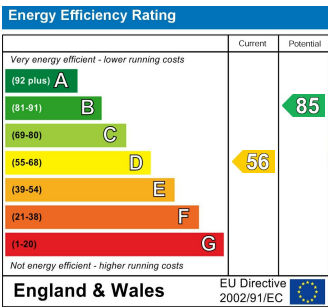
Floor Plans



Area Map



Energy Performance Graph



These particulars, whilst believed to be accurate are set out as a general outline only for guidance and do not constitute any part of an offer or contract. Intending purchasers should not rely on them as statements of representation of fact, but must satisfy themselves by inspection or otherwise as to their accuracy. No person in this firms employment has the authority to make or give any representation or warranty in respect of the property.