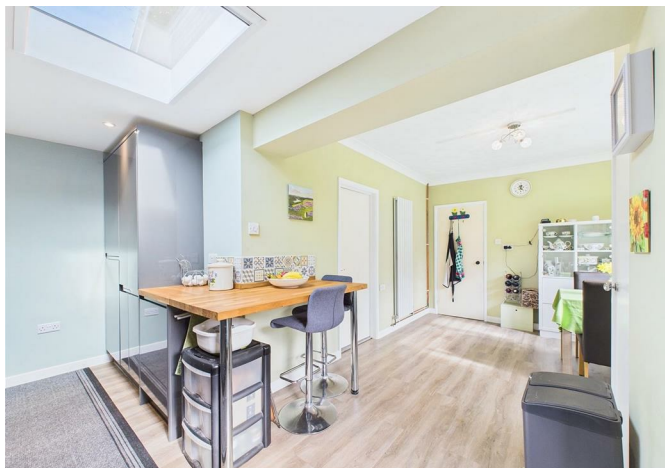


PARSONS
COMPANY



1 Howlett Close, Dereham, NR19 1PB
£220,000



1 Howlett Close, Dereham, NR19 1PB

£220,000

An extended two-bedroom end of terrace bungalow situated in the popular market town of Dereham. This property is ideal for a first-time buyer or someone looking to downsize.

As you enter, there is a small entry that leads to a living room to the front, this leads through to an open plan kitchen/dining room. The kitchen comprises to a range of fitted grey high gloss units with a range of integrated appliances and wood worktop, this area enjoys a skylight to ceiling that allows extra sunlight, this area open to the generous dining space.

Further on, are the two bedrooms, with one being double sized and another single sized room that leads through to a lean-to. The bedrooms are serviced by fitted bathroom suite.

Outside, to the front, is off-street parking for two vehicles via a shingled driveway. To the rear, is a secluded garden with a patio, flower beds and shrubs. There is also a workshop with power and lighting, summerhouse and shed.

For room measurements please click on the floor plan option.

[Location](#)

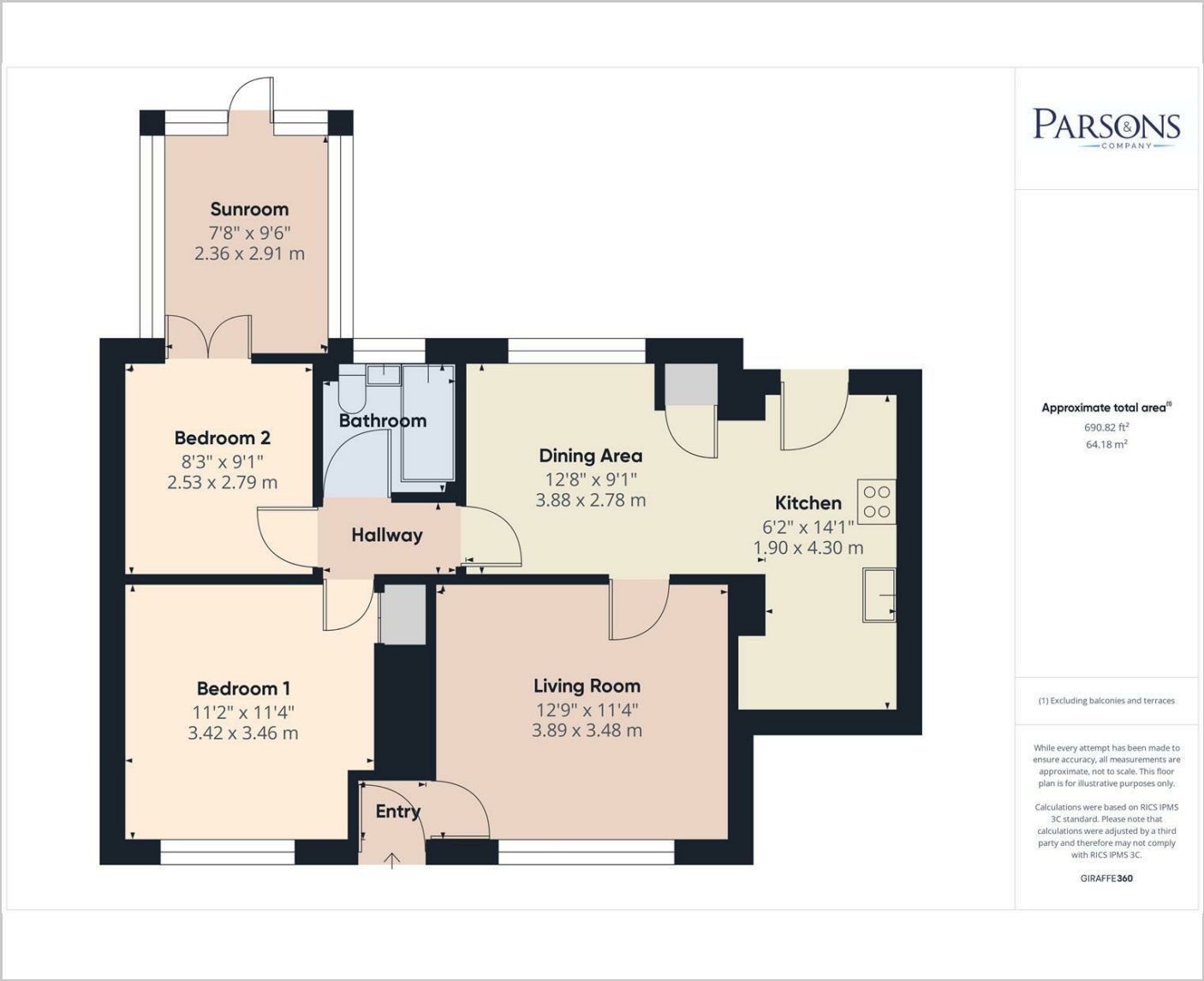
Description

Situation

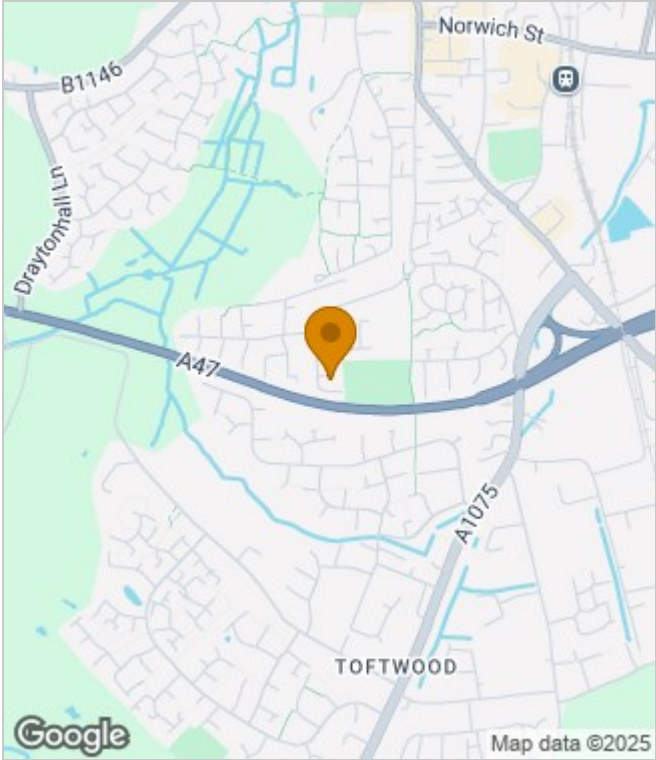
null
Council Tax Band: A
Available:



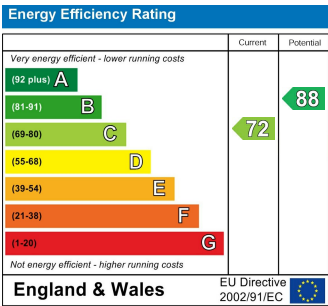
Floor Plans



Area Map



Energy Performance Graph



These particulars, whilst believed to be accurate are set out as a general outline only for guidance and do not constitute any part of an offer or contract. Intending purchasers should not rely on them as statements of representation of fact, but must satisfy themselves by inspection or otherwise as to their accuracy. No person in this firms employment has the authority to make or give any representation or warranty in respect of the property.