



**HEATHCOTE**

TADWORTH

[www.michael-everett.co.uk](http://www.michael-everett.co.uk)



# 1 HEATHCOTE

TADWORTH, KT20 5TH



THREE RECEPTION ROOMS



FOUR BEDROOMS



RE FITTED KITCHEN



TWO BATHROOMS

**APROX. 2064 FT<sup>2</sup> | 191.4M<sup>2</sup>**

Located at the entrance to Tadworth Park is this detached home offering plenty of space for any growing family or downsizer. As you approach the gated wrought iron entrance you will be pleasantly surprised with the off-street parking available for yourself and family and friends when they visit, there is also a double garage with two single electric up and over doors. The accommodation which would benefit from some internal redecoration comprises, entrance porch, entrance hallway, downstairs cloakroom, double aspect living room with open feature place, dining room (currently used as a TV room), re fitted kitchen/breakfast room, with island unit and ample storage cupboards, utility room with door to side, there are double doors leading into a 33ft conservatory which runs across the rear of this property and overlooks the superbly managed and maintained south east facing garden with lawn, flower borders and patio area plus a large side access area. From the first-floor landing there are four bedrooms all benefitting from double wardrobes with the master having further built in wardrobes leading to an en suite bathroom. There is a further family bathroom.

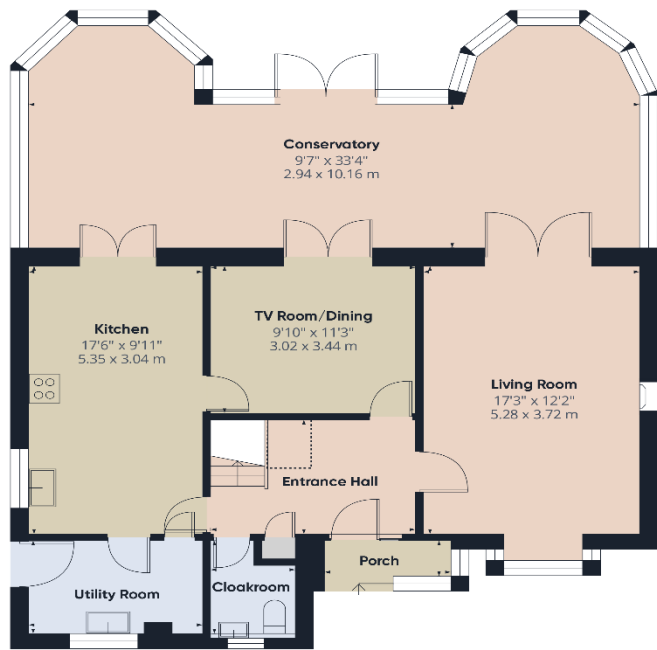
This home is positioned close to Tadworth Primary School, Heathcote Medical Centre and access to the Brighton Road (A217) leading to local towns of Banstead, Epsom, Kingswood and down to Reigate and Junction 8 of the M25. Tadworth station and a selection of local independent shops for your everyday needs are a short distance away as well as Walton On The Hill and the glorious walks on Walton Heath.

**ASKING PRICE: £825,000** Freehold

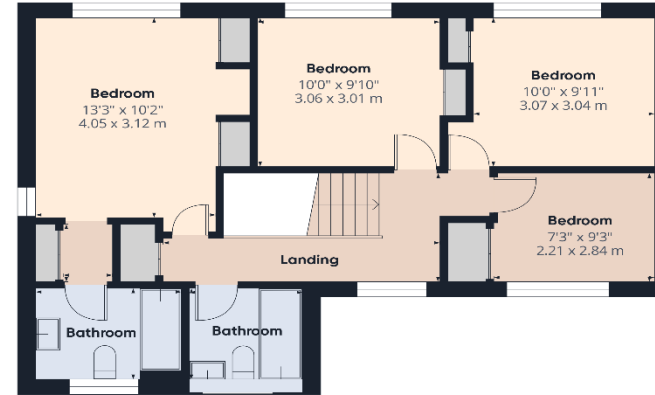
**Council Tax Band G EPC Rating D**



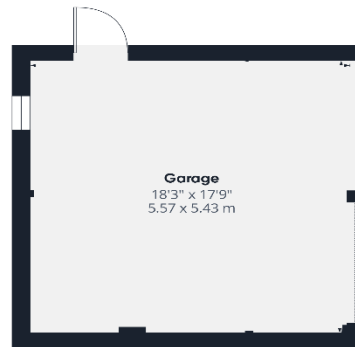




**Ground Floor** Building 1



**Floor 1** Building 1







**WALTON ON THE HILL** 61 Walton Street, Walton-on-the-Hill, Surrey KT20 7RZ  
**01737 814877**