



CHEQUERS LANE

WALTON ON THE HILL

TIBURON, CHEQUERS LANE

WALTON ON THE HILL, KT20 7QY



2 RECEPTION ROOMS



KITCHEN & UTILITY ROOM



3 BEDROOMS



BATHROOM & CLOAKROOM

APPROX 1607.13 SQ FT | 149.31 M²

A rare opportunity to acquire this pretty detached cottage family home situated on a mature and level plot of approaching a third of an acre with fabulous scope to improve and potential to extend subject to any required consents.

The property includes, porch, reception hall, cloakroom, lounge, kitchen, dining area, utility room, landing, three bedrooms and bathroom. Outside there is an integral double garage and an in and out driveway with space for additional vehicles and space for a boat, caravan, or motorhome. The property has gas fired central heating and endless possibilities.

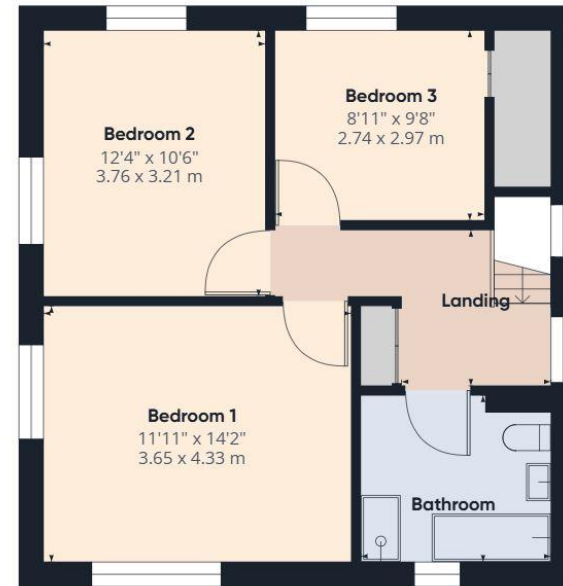
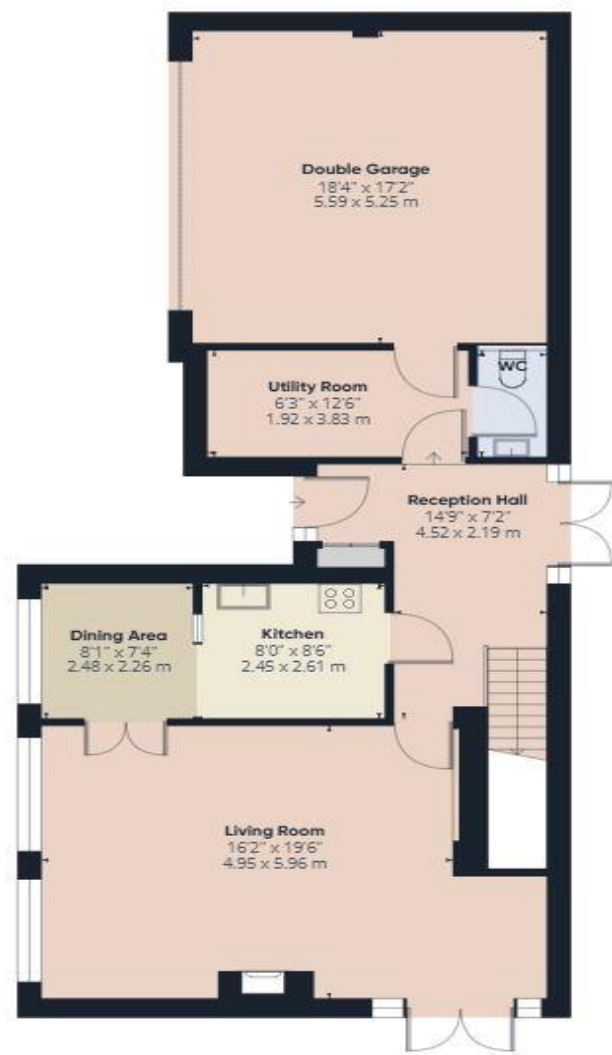
The village offers several gastro pubs and restaurants, a post office and supermarket for everyday needs, as well as a picturesque central pond and is surrounded by some of Surrey's finest open countryside at Walton Heath.

Tadworth station has services to London Bridge and Victoria with a journey time of around 50 minutes, whilst the M25 can be accessed at either Reigate Hill or Leatherhead providing swift access to Gatwick, Heathrow, the south coast and the motorway network. The area is well served with infant and junior schools and a selection of senior schools and colleges within the wider local area.

PRICE: O.I.E **£900,000** Freehold

Council Tax Band F EPC Rating F







WALTON ON THE HILL 61 Walton Street, Walton-on-the-Hill, Surrey KT20 7RZ
01737 814877



IMPORTANT We would inform prospective purchasers that these sales particulars have been prepared as a general guide only. A detailed survey has not been carried out, nor the services, appliances and fittings tested. Room sizes should not be relied upon for furnishing purposes and are approximate. If floor plans are included, they are for guidance only and illustration purposes only and may not be to scale. If there are any important matters likely to affect your decision to buy, please contact us before viewing the property.

michael-everett.co.uk