



STATION APPROACH

TADWORTH

FLAT 6 EAGLE HOUSE

24 STATION APPROACH TADWORTH KT20 5AH



LIVING ROOM & BALCONY



KITCHEN



1 BEDROOM



BATHROOM

EPC RATING: C COUNCIL TAX BAND: C APROX. 550 FT² | 51.1 M²

A bright and airy one double bedroom top (2nd) floor apartment with high ceilings and a balcony, located in the heart of Tadworth Village with village amenities on your doorstep including Tadworth Station.

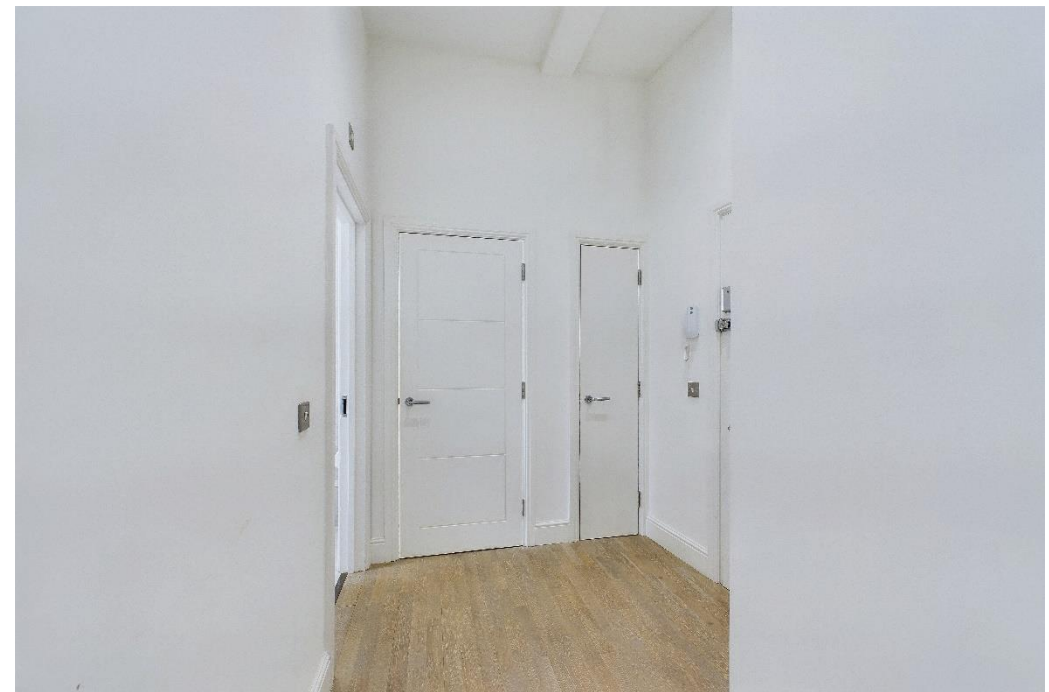
This wonderful apartment previously a former Bank was converted in 2020 and comprises of communal entrance hallway with staircase to the top floor, hallway with two storage cupboards, three-piece bathroom, double bedroom and a stunning open plan Kitchen/Living/Dining space with bi folds opening onto your very own private balcony with space for table and chairs. The kitchen is well fitted with integrated appliances. The property also has double glazed sash windows and gas central heating.

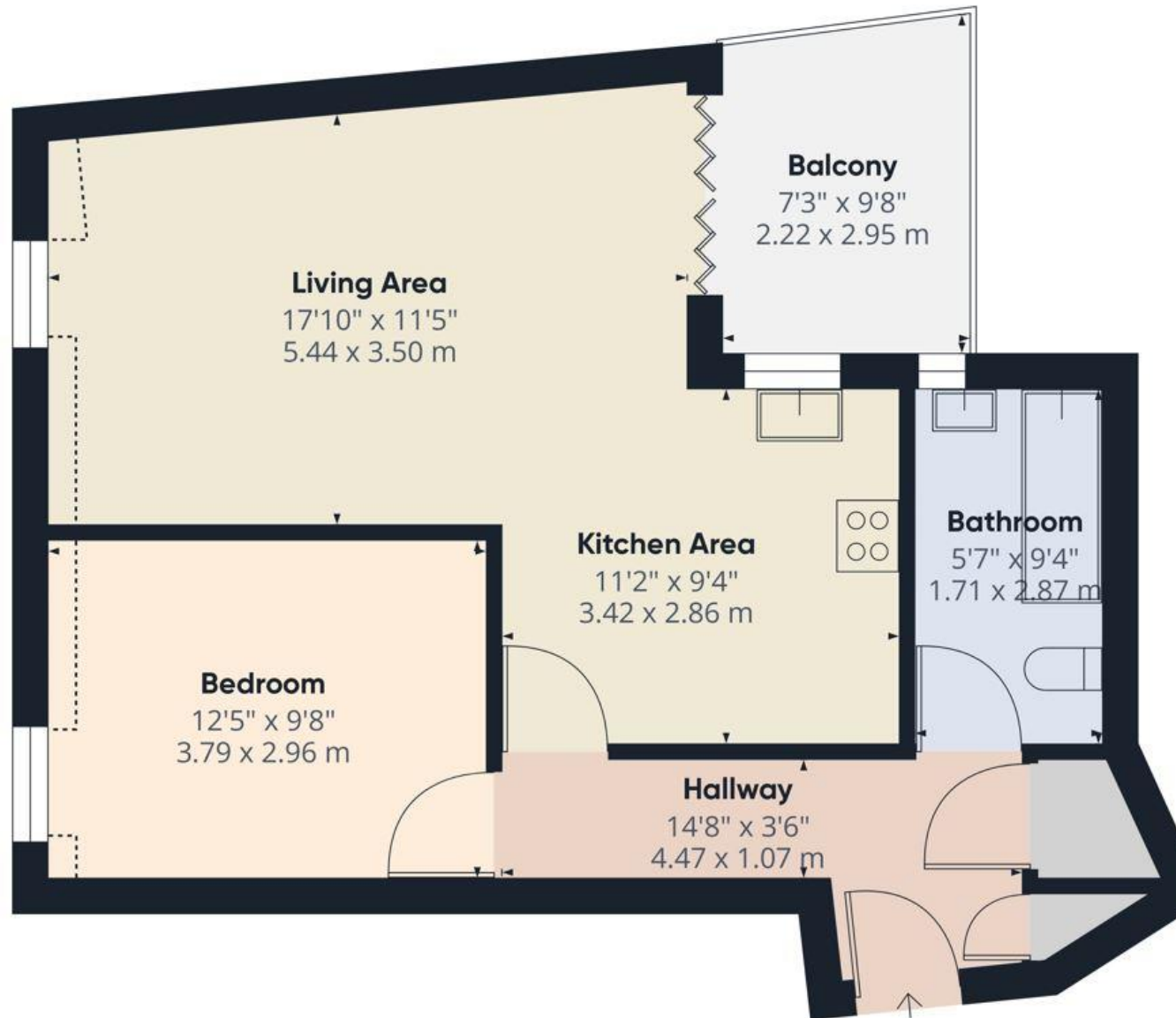
Tadworth Station provides services into London Bridge and Victoria via East Croydon with a journey time of around 50 minutes. The village has local independent shops for your everyday needs with the vibrant high streets of Banstead and Epsom both within 3 miles. The M25 can be accessed 4 miles to the south at the Reigate Hill interchange and many fine walks can be enjoyed within the nearby open spaces of Walton Heath and Epsom Downs.

PRICE: **£250,000** LEASEHOLD

NEW LEASE OF 125 YEARS







WALTON ON THE HILL 61 Walton Street, Walton-on-the-Hill, Surrey KT20 7RZ
01737 814877



IMPORTANT We would inform prospective purchasers that these sales particulars have been prepared as a general guide only. A detailed survey has not been carried out, nor the services, appliances and fittings tested. Room sizes should not be relied upon for furnishing purposes and are approximate. If floor plans are included, they are for guidance only and illustration purposes only and may not be to scale. If there are any important matters likely to affect your decision to buy, please contact us before viewing the property.