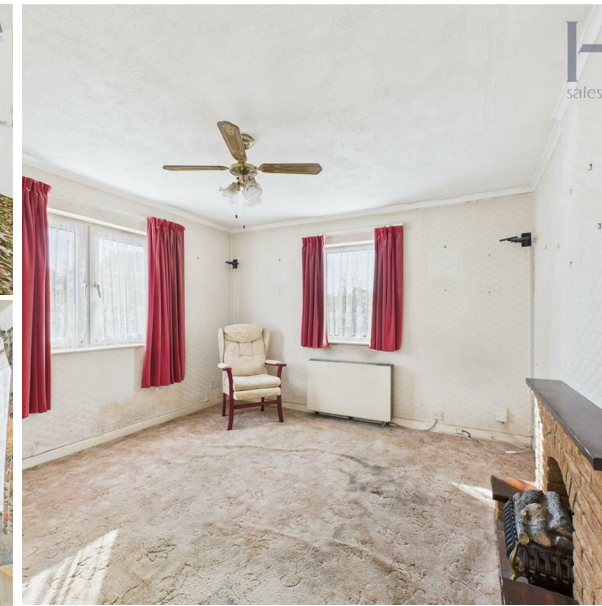


# The Gardens, Stotfold, SG5 4HD

Asking Price - £395,000



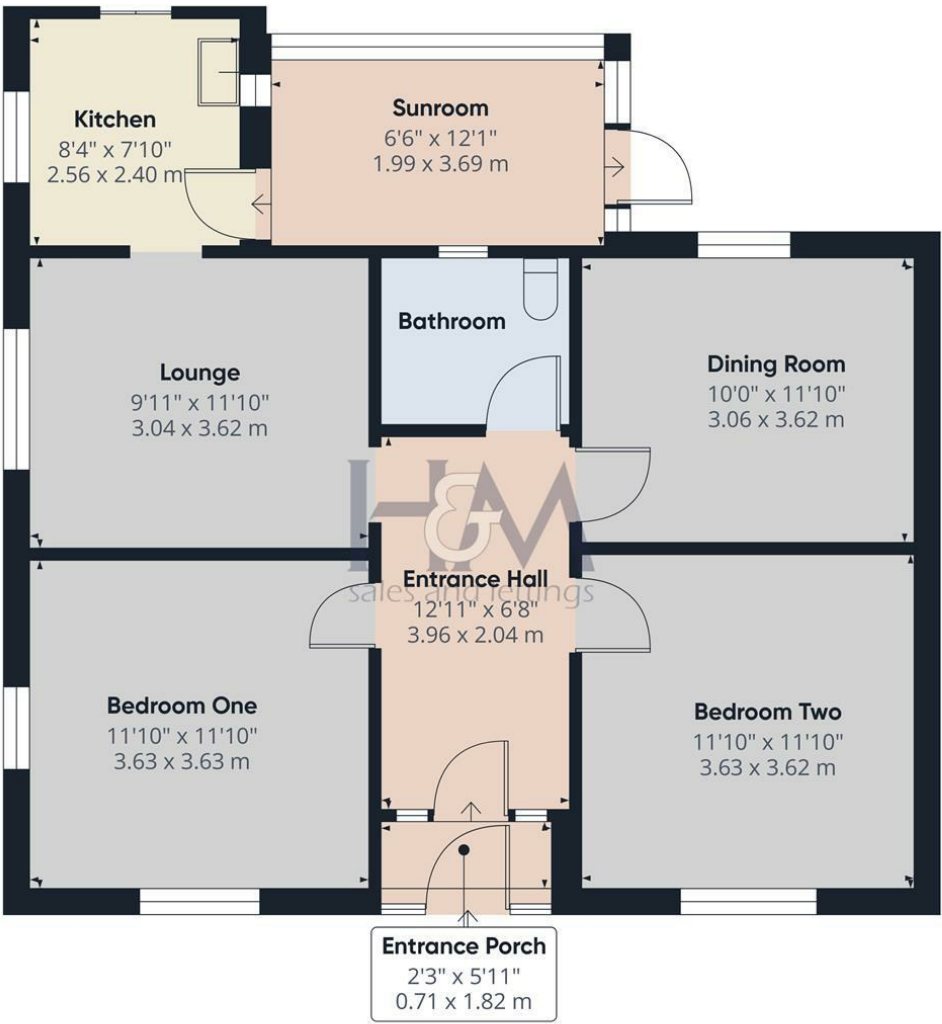


Situated within a cul-de-sac in the popular town of Stotfold is this two bedroom, two reception room detached bungalow. The property itself is situated on a corner plot with the rear garden measuring approximately 49ft x 44ft, offered with vacant possession and in need of refurbishment.



86 High Street  
Stevenage  
Hertfordshire  
SG1 3DW  
01438 708111

stevenage@homesandmortgages.co.uk



Approximate total area<sup>m</sup>  
808 ft<sup>2</sup>  
75 m<sup>2</sup>

(1) Excluding balconies and terraces

Calculations reference the RICS IPMS 3C standard. Measurements are approximate and not to scale. This floor plan is intended for illustration only.

GIRAFFE360

Energy Efficiency Rating		
	Current	Potential
Very energy efficient - lower running costs		
(92 plus) A		
(81-91) B		
(69-80) C		
(55-68) D		
(39-54) E		
(21-38) F		
(1-20) G		
Not energy efficient - higher running costs		
England & Wales		EU Directive 2002/91/EC 