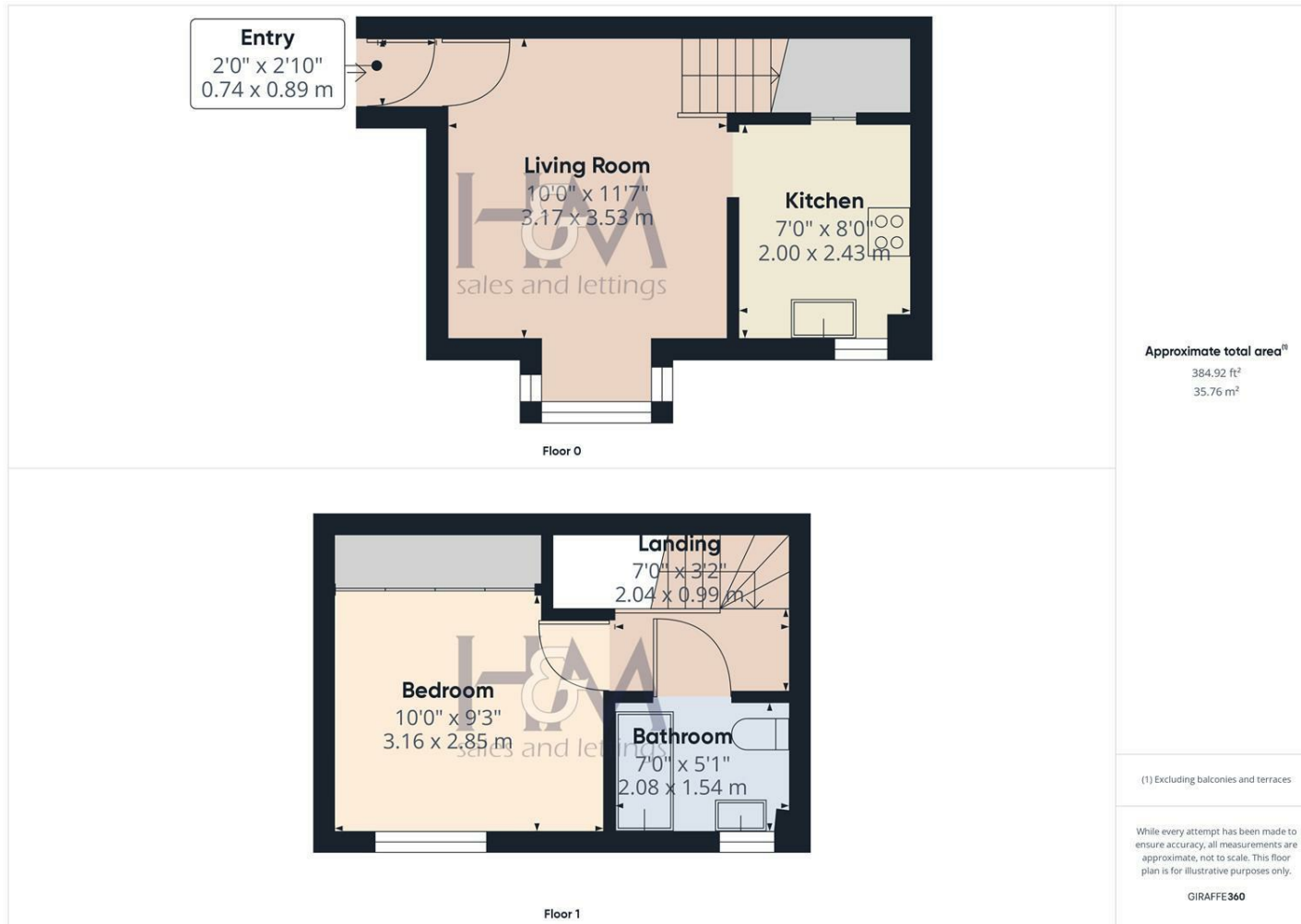


Providence Grove, Stevenage, Hertfordshire, SG1 3SP
£220,000



CHAIN FREE!! One bedroom cluster home located within walking distance of Stevenage New & Old Town, with two allocated parking spaces and ample communal parking this freehold property is ideal for first time buyers and investors alike with a yield potential of 6%. For more information and to arrange your viewing call Homes and Mortgages on 01438 728 444.



86 High Street
Stevenage
Hertfordshire
SG1 3DW
01438 728444

stevenage@homesandmortgages.co.uk

Energy Efficiency Rating

	Current	Potential
Very energy efficient - lower running costs		
(92 plus) A		91
(81-91) B		
(69-80) C	72	
(55-68) D		
(39-54) E		
(21-38) F		
(1-20) G		
Not energy efficient - higher running costs		
England & Wales	EU Directive 2002/91/EC 