

Belgrave Mews, Stevenage, Hertfordshire, SG2 8QE

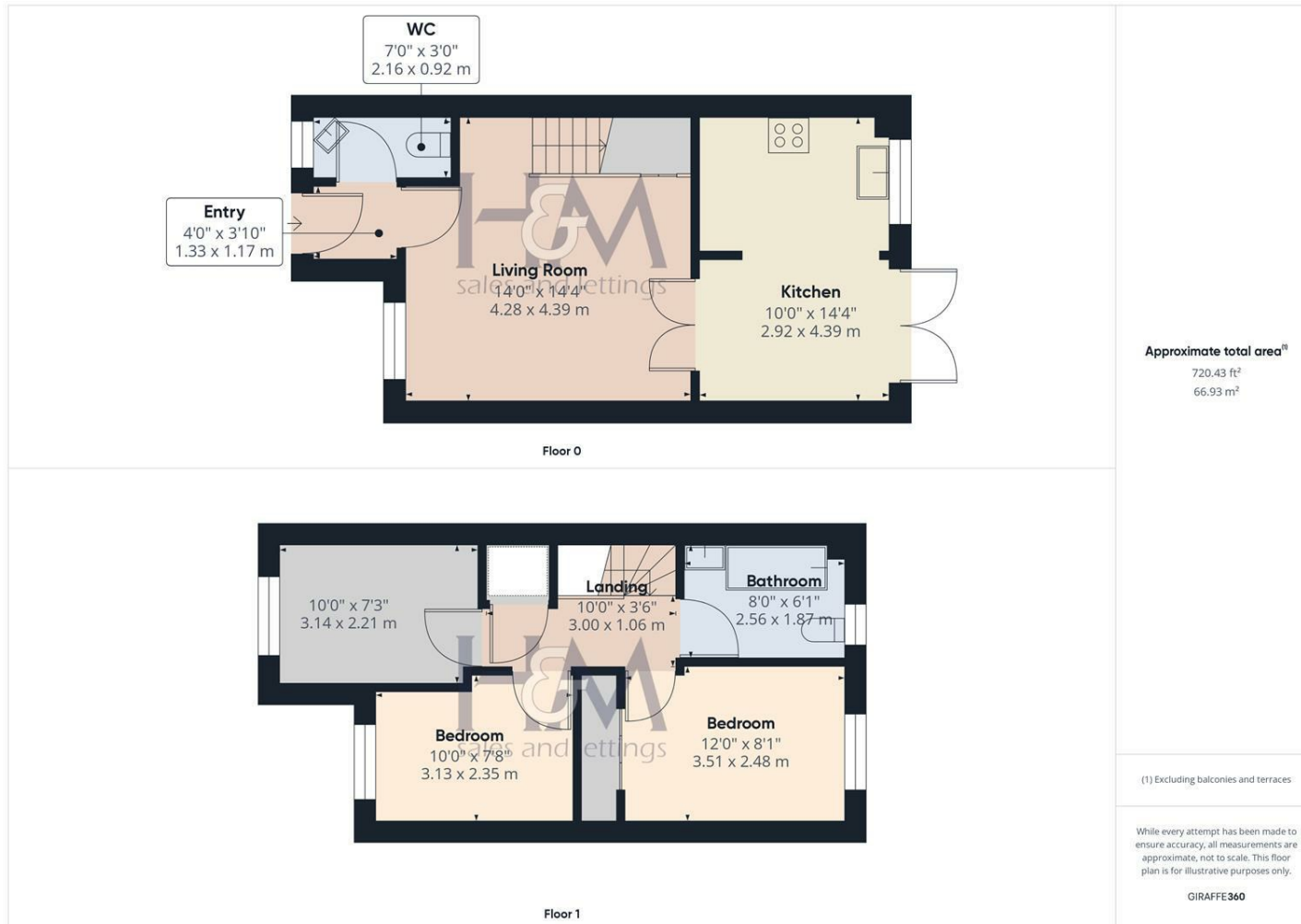
£375,000



Three bedroom mid terraced located in a quiet private development of only six houses, off Hertford Road. With excellent access to the A602, allocated parking, downstairs cloakroom and three good size bedrooms this property is ideal for First time buyers or those looking to commute. For more information on to arrange your viewing call Homes and Mortgages on 01438 728 444.

86 High Street
 Stevenage
 Hertfordshire
 SG1 3DW
 01438 728444

stevenage@homesandmortgages.co.uk



Energy Efficiency Rating

	Current	Potential
Very energy efficient - lower running costs		
(92 plus) A		
(81-91) B		88
(69-80) C	75	
(55-68) D		
(39-54) E		
(21-38) F		
(1-20) G		
Not energy efficient - higher running costs		
England & Wales	EU Directive 2002/91/EC 