

Canterbury Way Stevenage Hertfordshire SG1 4EQ.
Offers In The Region Of £290,000



Canterbury Way, Stevenage, Hertfordshire, SG1 4EQ.

Council Tax Band: C

CHAIN FREE, IN NEED OF MODERNISATION

This mid terraced three bedroom family home has been lived in and enjoyed by the same family for 52 years from new in 1972. Offered for sale with no upward chain this property is a must see, with a downstairs cloakroom, nice size kitchen/diner, three good size bedrooms and an enclosed rear garden. Situated in a short walk to local amenities, schools and bus routes, for more information and to arrange a viewing call Homes and Mortgages on 01438 728444.

Entrance Hall

3'9 x 3'1 (1.14m x 0.94m)

Aluminum framed door to front aspect, concertiser doo leading to cloakroom, tiled floor and door to:

Cloakroom

5'6 x 2'8 (1.68m x 0.81m)

Window to side aspect, low level WC and wash hand basin.

Kitchen/Diner

15'5 x 13'9 (4.70m x 4.19m)

Window to front aspect, wood effect flooring, stairs to first floor landing. The kitchen comprises wall and base units with roll top worksurfaces, a stainless steel sink and drainer with mixer tap work, and two built in storage cupboards.

Lounge

15'4 x 13'1 (4.67m x 3.99m)

Double glazed patio doors to rear aspect, feature fireplace, coving to ceiling and wall mounted radiator.

Landing

11'8 x 5'11 (3.56m x 1.80m)

Stairs from kitchen/Diner, airing cupboard, loft access and doors to:

Bedroom One

15'11 x 8'7 (4.85m x 2.62m)

Window to front aspect and wall mounted radiator.

Bedroom Two

13'11 x 9'0 (4.24m x 2.74m)

Window to rear aspect and wall mounted radiator.

Bedroom Three

10'11 x 6'7 (3.33m x 2.01m)

Window to rear aspect and wall mounted radiator.

Bathroom

6'7 x 5'11 (2.01m x 1.80m)

Window to front aspect, low level WC, wash hand basin, panel bath, and lino flooring.

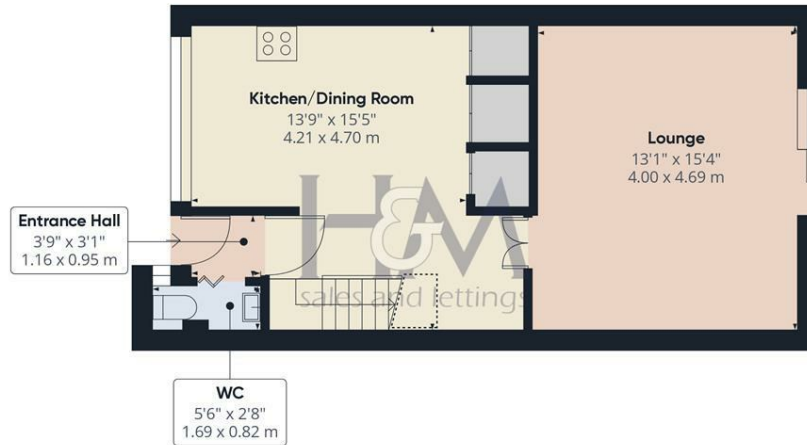
Rear Garden

Enclosed rear garden with patio area to rear side leading to laid lawn and wood storage shed.

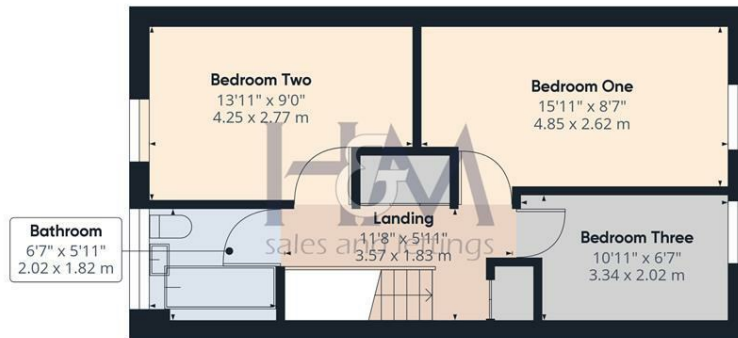
Front Garden

Small front garden with wood fence and shingle, out side storage cupboard,





Floor 0



Floor 1

Approximate total area⁽¹⁾

897.18 ft²
83.35 m²

Reduced headroom

13.74 ft²
1.28 m²

(1) Excluding balconies and terraces.

 Reduced headroom
(below 1.5m/4.92ft)

While every attempt has been made to ensure accuracy, all measurements are approximate, not to scale. This floor plan is for illustrative purposes only.

GIRAFFE360

Homes and Mortgages
86 High Street
Stevenage
Hertfordshire
SG1 3DW
01438 728444

stevenage@homesandmortgages.co.uk