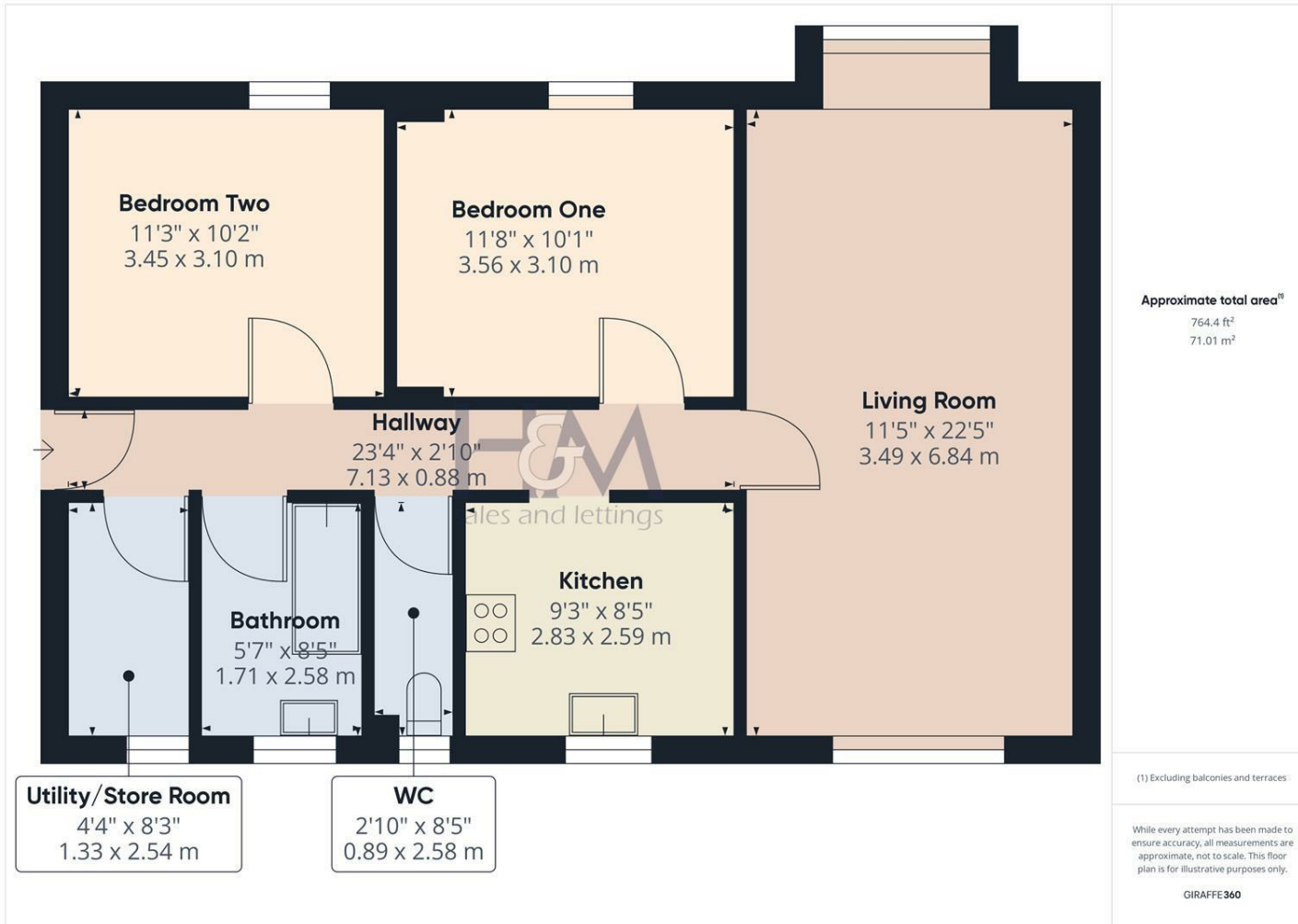


Baron Court, Stevenage, Hertfordshire, SG1 4RS
Asking Price £220,000 - Leasehold



ATTENTION LANDLORDS!!! Generating an annual yield of approximately 7% and the property already has tenants in situ! A spacious two bedroom ground floor flat situated within walking distance of Lister hospital and the local Sainsbury supermarket. The property comprises of two double bedrooms, 22ft lounge, refitted kitchen, double glazing and gas heating. (Please note these are historical photographs).



86 High Street
Stevenage
Hertfordshire
SG1 3DW
01438 728444

stevenage@homesandmortgages.co.uk

Energy Efficiency Rating

	Current	Potential
Very energy efficient - lower running costs		
(92 plus) A		
(81-91) B		
(69-80) C	70	76
(55-68) D		
(39-54) E		
(21-38) F		
(1-20) G		
Not energy efficient - higher running costs		

England & Wales

EU Directive
2002/91/EC

