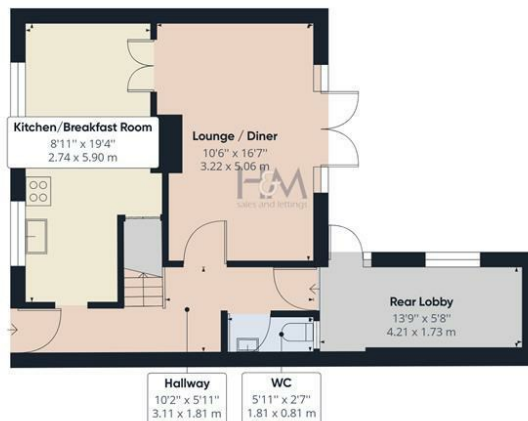


Webb Rise, Stevenage, Hertfordshire, SG1 5QG

£315,000



With a GUIDE PRICE of £315,000 to £325,000 is this CHAIN FREE well presented three bedroom mid terraced property located in the Pin Green area of Stevenage. This family home has three good size bedrooms, southerly facing rear garden, downstairs cloakroom and a good size storeroom that would make an ideal home office or utility room. Situated in a quiet cul de sac and a short walk from local amenities and Mobbsbury Primary School this property is ideal for young families and first time buyers.



Floor 0



Floor 1

Approximate total area⁽¹⁾

938.72 ft²

87.21 m²

Reduced headroom

8.26 ft²

0.77 m²

(1) Excluding balconies and terraces

☐ Reduced headroom (below 1.5m/4.92ft)

While every attempt has been made to ensure accuracy, all measurements are approximate, not to scale. This floor plan is for illustrative purposes only.

GIRAFFE360

86 High Street
Stevenage
Hertfordshire
SG1 3DW
01438 728444

stevenage@homesandmortgages.co.uk

Energy Efficiency Rating

| | Current | Potential |
|---|-----------|-----------|
| Very energy efficient - lower running costs | | |
| (92 plus) A | | |
| (81-91) B | | 83 |
| (69-80) C | | |
| (55-68) D | 60 | |
| (39-54) E | | |
| (21-38) F | | |
| (1-20) G | | |
| Not energy efficient - higher running costs | | |

England & Wales

EU Directive
2002/91/EC

