

Webb Rise, Stevenage, Hertfordshire, SG1 5QG

£315,000

H&M
sales and lettings

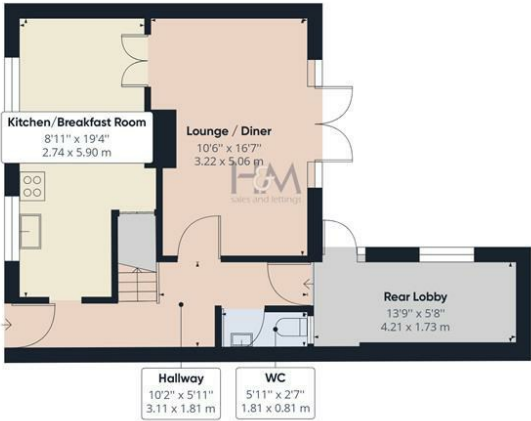


With a GUIDE PRICE of £315,000 to £325,000 is this CHAIN FREE well presented three bedroom mid terraced property located in the Pin Green area of Stevenage. This family home has three good size bedrooms, southerly facing rear garden, downstairs cloakroom and a good size storeroom that would make an ideal home office or utility room. Situated in a quiet cul de sac and a short walk from local amenities and Mobbsbury Primary School this property is ideal for young families and first time buyers.



86 High Street
Stevenage
Hertfordshire
SG1 3DW
01438 728444

stevenage@homesandmortgages.co.uk



Floor 0



Floor 1

Approximate total area⁽¹⁾
938.72 ft²
87.21 m²

Reduced headroom
8.26 ft²
0.77 m²

(1) Excluding balconies and terraces

Reduced headroom
(below 1.5m/4.92ft)

While every attempt has been made to ensure accuracy, all measurements are approximate, not to scale. This floor plan is for illustrative purposes only.

GIRAFFE360

Energy Efficiency Rating		
	Current	Potential
Very energy efficient - lower running costs		
(92 plus) A		83
(81-91) B		
(69-80) C		
(55-68) D	60	
(39-54) E		
(21-38) F		
(1-20) G		
Not energy efficient - higher running costs		
England & Wales		EU Directive 2002/91/EC