



19 FENGATE SPALDING, PE12 0XL

£470,000
FREEHOLD

Welcome to this stunning detached house located in the charming village of Fengate, Moulton Chapel, Spalding. This property boasts 2 reception rooms, 4 spacious bedrooms, and 2 modern bathrooms spread across a generous 2,600 sq ft of living space.

As you step inside, you are greeted spacious hallway leading onto a beautifully designed open plan kitchen featuring a large centre island and modern integrated appliances with stunning bifold doors leading on to the rear garden, perfect for entertaining guests or enjoying family meals. The kitchen is not only modern but also in exceptional condition, adding a touch of elegance to the home.

Parking will never be an issue with space for up to 6 vehicles, along with the convenience of a double garage for additional storage or parking. The property is meticulously presented, showcasing a blend of style and comfort that is sure to impress even the most discerning buyer.

19 FENGATE

• LUXURY LARGE FAMILY HOME • EXCEPTIONALLY PRESENTED • MODERN OPEN PLAN KITCHEN • LARGE CENTRAL KITCHEN ISLAND • BI FOLD DOORS LEADING ONTO

ENCLOSED REAR GARDEN • FOUR DOUBLE BEDROOMS • EN-SUITE TO MASTER • POPULAR VILLAGE LOCATION • DOUBLE GARAGE • CALL TODAY

Summary

Welcome to this stunning detached house located in the charming village of Fengate, Moulton Chapel, Spalding. This property boasts 2 reception rooms, 4 spacious bedrooms, and 2 modern bathrooms spread across a generous 2,600 sq ft of living space.

As you step inside, you are greeted spacious hallway leading onto a beautifully designed open plan kitchen featuring a large centre island and modern integrated appliances with stunning bifold doors leading on to the rear garden, perfect for entertaining guests or enjoying family meals. The kitchen is not only modern but also in exceptional condition, adding a touch of elegance to the home.

Parking will never be an issue with space for up to 6 vehicles, along with the convenience of a double garage for additional storage or parking. The property is meticulously presented, showcasing a blend of style and comfort that is sure to impress even the most discerning buyer.

Nestled in a popular village location, this house offers the perfect combination of tranquillity and community living. Whether you are looking for a peaceful retreat or a place to raise a family, this property ticks all the boxes.

Don't miss out on the opportunity to own a piece of paradise in Fengate. Book a viewing today and experience the allure of this immaculate home for yourself.

Hallway

Step into an impressive entrance hallway,

where style and space combine to create a grand first impression. This expansive area and ample natural light streaming through windows, casting a warm glow over elegant flooring. The neutral tones of the walls, complemented by subtle molding details, add sophistication. The hallway offers plenty of room for decorative pieces, such as a console table with a mirror above, and could easily accommodate additional seating. This is more than an entryway – it's a welcoming space that sets the tone for the rest of the home

Lounge

An inviting and elegant lounge awaits, designed with comfort and style in mind for the modern executive family home. This spacious room is bathed in natural light from expansive windows at both the front and rear, creating a bright, airy atmosphere throughout the day. The layout offers a seamless blend of relaxation and functionality, with ample space for plush seating and tasteful decor. High-quality finishes, such as soft carpeting or polished hardwood floors, provide warmth and elegance, while a statement fireplace serves as a central focal point, perfect for cozy evenings. Whether for family gatherings or sophisticated entertaining, this lounge offers the perfect setting.

Kitchen/Diner

Experience the heart of the home in this stunning open-plan kitchen and dining area, thoughtfully designed for both functionality and style. The spacious layout flows effortlessly, anchored by a large central kitchen island that provides ample prep space, casual seating, and a stylish focal point for socializing. Integrated, high-end appliances are seamlessly built into sleek

cabinetry, giving the space a modern, streamlined look. Bathed in natural light from expansive bifold doors that open to the garden, this area is perfect for indoor-outdoor living, ideal for both everyday family meals and entertaining. With room for a large dining table, this kitchen-diner is as practical as it is inviting, creating a warm, vibrant hub for the home.

Sitting Room

Elegant sitting room, perfect for year-round enjoyment. This versatile space is designed with comfort and relaxation in mind, featuring large windows that flood the room with natural light, while providing picturesque views of the garden. Rich, soft furnishings and a neutral color palette create a welcoming atmosphere that adapts easily to any season. The room stays warm in winter, while its airy layout ensures it remains cool and inviting in the summer. Whether it's for reading, unwinding with family, or entertaining guests, this sitting room is a peaceful retreat in all seasons."

Utility

Compact yet functional, this well-designed utility room makes the most of its space. It features a practical layout with designated areas for a sink, washing machine, and dryer, ensuring laundry tasks are handled with ease. The sink is conveniently located, providing a quick spot for rinsing and cleaning. Above and below the appliances, storage cabinets offer ample space for household essentials, keeping everything neatly tucked away. Despite its smaller size, this utility room is a highly efficient, organized space that helps streamline daily chores.

WC

This sleek and modern downstairs WC combines style with functionality in a compact space. Clean lines and high-quality finishes create a contemporary feel, featuring a wall-mounted sink and toilet. The walls are accented with elegant tiling, adding texture and sophistication, while a statement mirror enhances the sense of space. Subtle lighting and chrome fixtures complete the look, making this WC both practical and visually appealing—a perfect blend of modern design and convenience for guests and family alike.

Office

This inviting home office is thoughtfully designed to blend productivity with comfort. The standout feature is a beautiful bay window that fills the space with natural light, creating an inspiring atmosphere for focused work or creative projects. The window's ledge provides a cozy spot for plants or decor, adding a touch of personality to the room. Ample space allows for a large desk and ergonomic seating, while built-in shelving or cabinets help keep essentials organized and within reach. With its blend of function and charm, this home office is a bright, motivating space perfect for remote work or study.

Landing

Step onto a spacious, light-filled landing that exudes elegance and warmth. This expansive area benefits from abundant natural light streaming in from well-placed windows, enhancing the airy, open feel. The centerpiece is a stunning feature chandelier that cascades from above, casting a soft, ambient glow across the space and adding a touch of luxury. The landing offers ample room for decorative touches, such as a cozy

reading nook or statement artwork, making it more than a mere transition between rooms. It's a beautifully designed area that combines style with functionality, creating a welcoming and sophisticated part of the home.

Bathroom

This stylish family bathroom is designed with both comfort and practicality in mind. It features a sleek, modern bath with an overhead shower, combining flexibility for quick showers and relaxation for leisurely baths. The toilet and sink are thoughtfully placed to maximize space, with the sink set in a compact vanity unit that provides convenient storage for bathroom essentials. Quality finishes, such as contemporary tiling and chrome fixtures, add a fresh, polished look, while a large mirror enhances light and creates a sense of openness. It's a bright, functional space ideal for family use, offering everything needed for a streamlined morning routine or unwinding at the end of the day.

Bedroom 1

This expansive family bedroom is a perfect blend of space and comfort, thoughtfully designed to accommodate every need. Dual windows at both the front and rear flood the room with natural light, creating a bright, airy atmosphere and offering views from multiple perspectives. There's ample room for a large bed, seating area, and additional furnishings, allowing for a cozy yet spacious layout. The en-suite bathroom adds a touch of luxury and convenience, featuring a modern shower, sink, and toilet. With its well-planned layout and abundance of light, this family bedroom is a private retreat where style meets relaxation.

En-suite Bathroom

This luxurious en-suite bathroom offers a serene and spa-like retreat. A striking freestanding bath takes center stage, inviting relaxation with its elegant design and space to unwind. Adjacent, a large walk-in shower with sleek glass panels and freestanding bath provides a refreshing and modern touch. The toilet and sink are tastefully integrated into the space, with the sink set in a stylish vanity unit offering storage for essentials. High-end finishes, including contemporary tiling and polished chrome fixtures, complete the sophisticated look, while natural light from a nearby window creates a bright and airy atmosphere. This en-suite bathroom is the ultimate blend of comfort, convenience, and modern design.

Bedroom 2

Window to rear, door to:

Bedroom 3

Window to rear, door to:

Bedroom 4

Window to front, door to:

Airing Cupboard

Door to:

Double Garage

TwoUp and over door.

19 FENGATE





SEDGE

Your Local Property Experts

19 FENGATE

ADDITIONAL INFORMATION

Local Authority – South Holland

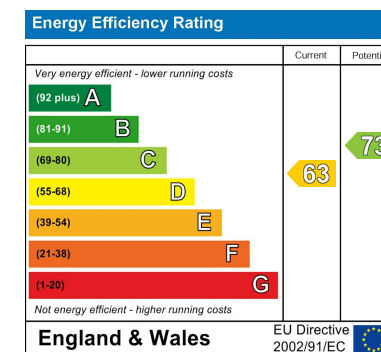
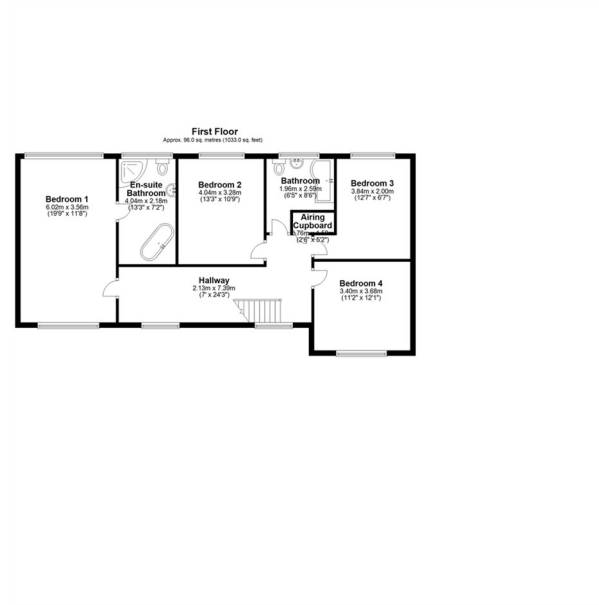
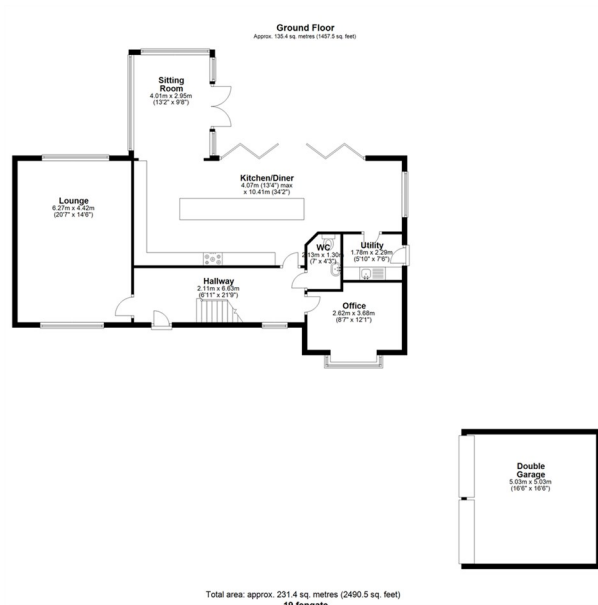
Council Tax – Band D

Viewings – By Appointment Only

Floor Area – 2600.00 sq ft

Tenure – Freehold





Agents Note: Whilst every care has been taken to prepare these particulars, they are for guidance purposes only. All measurements are approximate and are for general guidance purposes only and whilst every care has been taken to ensure their accuracy, they should not be relied upon and potential buyers/tenants are advised to recheck the measurements

Spalding Office Sales
11 The Crescent
Spalding
Lincolnshire
PE11 1AE

01775 713 888
enquiries@sedge-homes.com
www.sedge-homes.com

