

ELLIOTTS

Working hard for you



TFF, 67 Denmark Villas, Hove, BN3 3TH

Offers Over £220,000 Leasehold

Elliotts are delighted to offer for sale this 51 Sq.Mt / 549 Sq.Ft top floor one bedroom apartment in Denmark Villas. The property benefits from being sold with no-ongoing chain and is walking distance to Hove Train Station.

- No-Ongoing Chain
- 51 Sq.Mt / 548 Sq.Ft
- Top Floor Apartment
- Walking Distance to Hove Train Station
- Parking Zone - N
- One Double Bedroom
- Gas Central Heating
- Central Hove
- Separate Kitchen
- Walking Distance to Seafront



[**www.elliottsestateagents.co.uk**](http://www.elliottsestateagents.co.uk)

2 Church Road, Hove, East Sussex, BN3 2FL

T: 01273 773399

E: mail@elliottsestateagents.co.uk

Registered No 2829245

Registered Office: 2 Church Road, Hove, East Sussex, BN3 2FL

**ELLIOTTS***Working hard for you*

This one bedroom apartment offers a practical living space in a sought-after area of Central Hove. With no-ongoing chain, the property ensures a seamless transition for first-time buyers or investors. The apartment features gas central heating and a separate kitchen, providing essential amenities for comfortable living.

Located within Parking Zone N, residents will find convenient parking options available. The proximity to Hove Train Station makes commuting straightforward, while the nearby seafront offers leisure opportunities. The neighbourhood boasts a variety of local shops and dining options, adding to the convenience of the location.

The apartment's leasehold status provides an affordable entry into the property market. With a total area of 51 square metres, this home presents an efficient layout for modern living. Given its competitive price and excellent location, this property is expected to attract significant interest.



2 Church Road, Hove, East Sussex, BN3 2FL

T: 01273 773399

E: mail@elliottsestateagents.co.uk

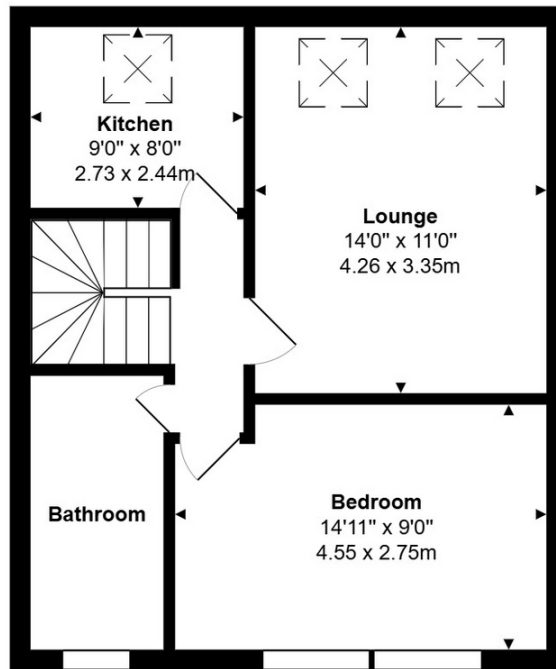
Registered No 2829245

Registered Office: 2 Church Road, Hove, East Sussex, BN3 2FL

www.elliottsestateagents.co.uk

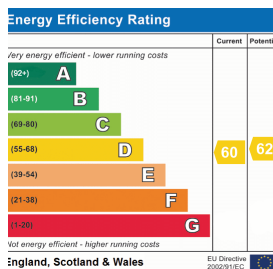
ELLIOTTS

Working hard for you



Total Area: 549 ft² ... 51.0 m²

All measurements are approximate and for display purposes only



You may download, store and use the material for your own personal use and research. You may not republish, retransmit, redistribute or otherwise make the material available to any party or make the same available on any website, online service or bulletin board of your own or of any other party or make the same available in hard copy or in any other media without the website owner's express prior written consent. The website owner's copyright must remain on all reproductions of material taken from this website.

2 Church Road, Hove, East Sussex, BN3 2FL

T: 01273 773399

E: mail@elliottsestateagents.co.uk

www.elliottsestateagents.co.uk

Registered No 2829245

Registered Office: 2 Church Road, Hove, East Sussex, BN3 2FL