



Two bedroom ground floor apartment within a short walk of Kingswood Village

exclusive to

SAUNDERS

richardsaunders.co.uk

Kingswood KT20

London 17 Miles
Kingswood Village And Station 2 Minutes' Walk
London By Rail 40 minutes
M25 (Junction 8) 3 miles
All times and distances are approximate

Situated on Kingswood's ever popular Furze Hill, this recently refurbished ground floor, two bedroom apartment is within a short walk to Kingswood Village. Where you have an array of shops including the Waterhouse cafe and the train station with links up to London. The tenant has use of the communal gardens and also allocated parking with ample visitor parking.

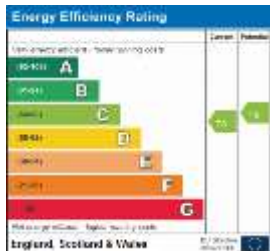
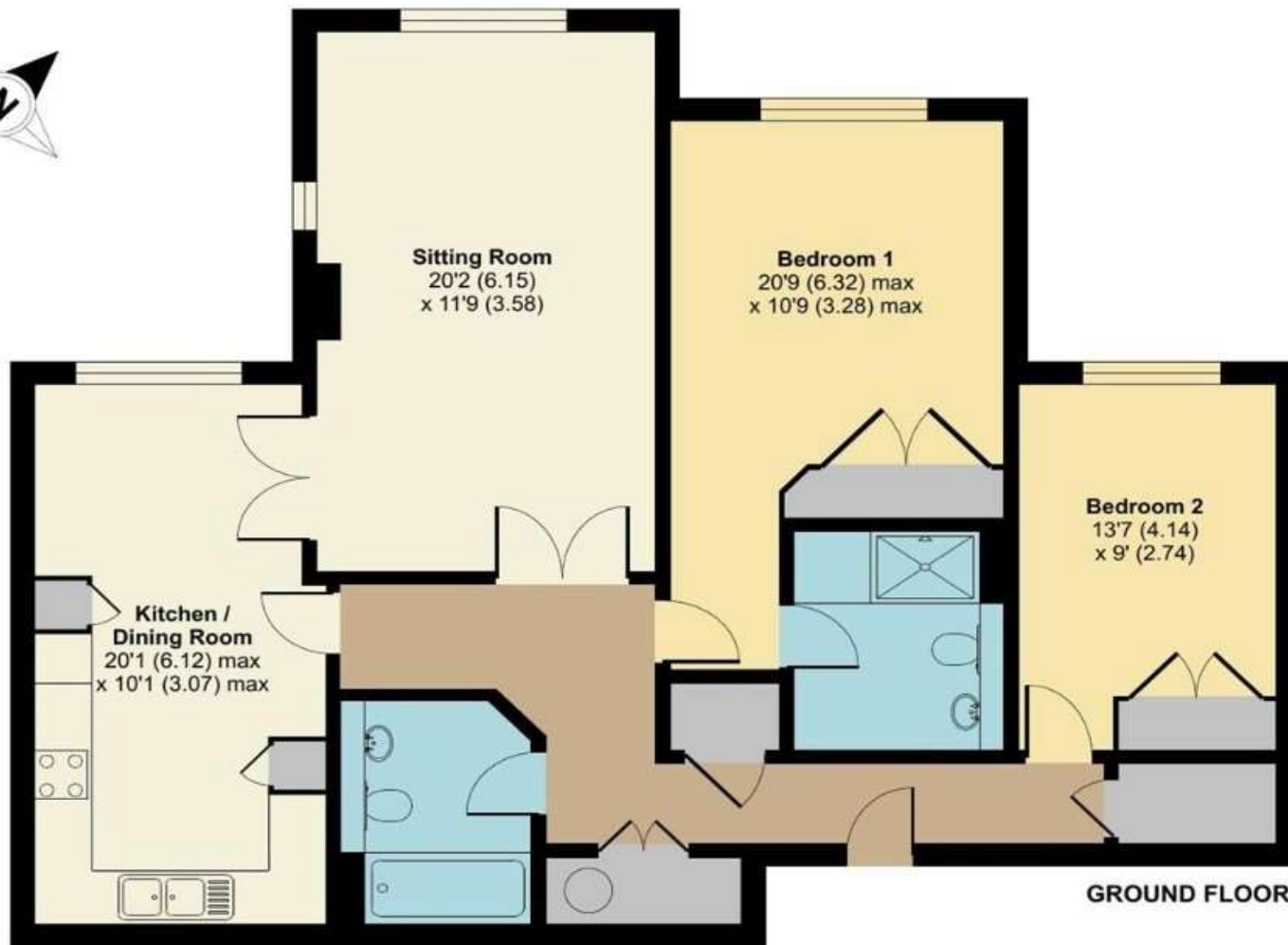


- Available June
- Two Double Bedrooms
- Furnished
- Gated Development
- Short Walk To Kingswood Village
- Allocated Parking & Visitor Parking

Price £1,600pcm







discover more at richardsaunders.co.uk



IMPORTANT NOTICE TO PURCHASERS: We endeavour to make our sales particulars accurate and reliable, however, they do not constitute or form part of an offer or any contract and none is to be relied upon as statements of representation or fact. The services, systems and appliances listed in this specification have not been tested by us and no guarantees as to their operating ability or efficiency are given. All measurements have been taken as guide to prospective buyers only, and are not precise. If you require clarification or further information on any points, please contact us, especially if you are travelling some distance to view.

Viewing
Please call us to arrange
a viewing appointment

1 Waterhouse Lane
Kingswood
01737 360000

2 High Street
Banstead
01737 363333

Residential Lettings
All Areas
01737 370700

