



**Meadowcourt, 118 Dalby Road, Melton
Mowbray, LE13 0BJ
Guide price £1,100,000**

Shouler & Son
Land & Estate Agents, Valuers & Auctioneers

**Meadowcourt
118 Dalby Road
Melton Mowbray
LE13 0BJ**

Meadowcourt of Melton Mowbray offers a rare opportunity to acquire one of the finest early 20th century period residences in Melton Mowbray. Constructed in 1914 of local brick under a clay rosemary tile roof, the property sits at the top of Dalby Hill and would have been nestled within 150 acres of surrounding grounds.





Approached by a gated tree lined driveway, the property is discreetly hidden amongst mature trees and has been painstakingly renovated by the current owners and offers all of the charm of a fine period property retaining many character features to include stained glass and leaded windows, sash windows, high coved ceilings, open fireplaces and wood burning stoves, parquet flooring and original doors, whilst having the added benefit of modern fixtures to the kitchen and bathrooms.

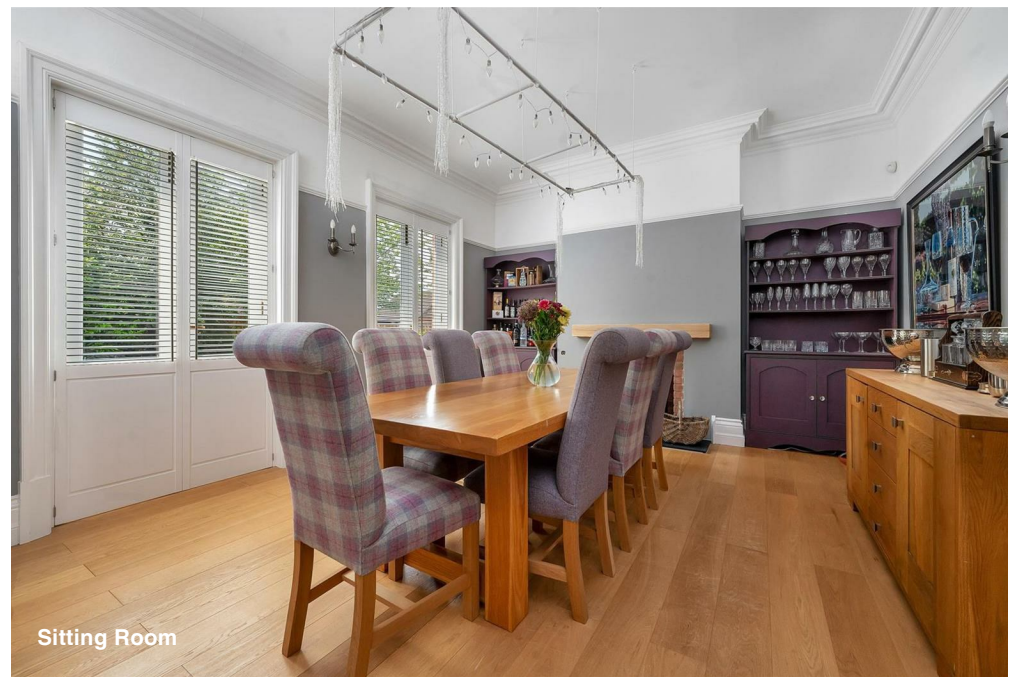
The superb living kitchen has been renovated in a traditional shaker style with quartz worktops, a range oven and integrated appliances. The windows have been renovated to make them more energy efficient without sacrificing the character and integrity of the property and the roof has been partially replaced.

Meadowcourt also has a separate annexe which would be ideal for a dependant relative or teenager, alternatively it could be used as a home office or could be rented out privately. The former coach house is currently utilised as an office/bar however it could easily be converted back to residential use. For the car enthusiast there is also an oak framed barn style four bay garage with storage room above.

Meadowcourt offers extensive accommodation in a one of a kind house located within walking distance to the town centre and offers a discerning owner a chance to own a real piece of Melton history with this unique one of kind property.



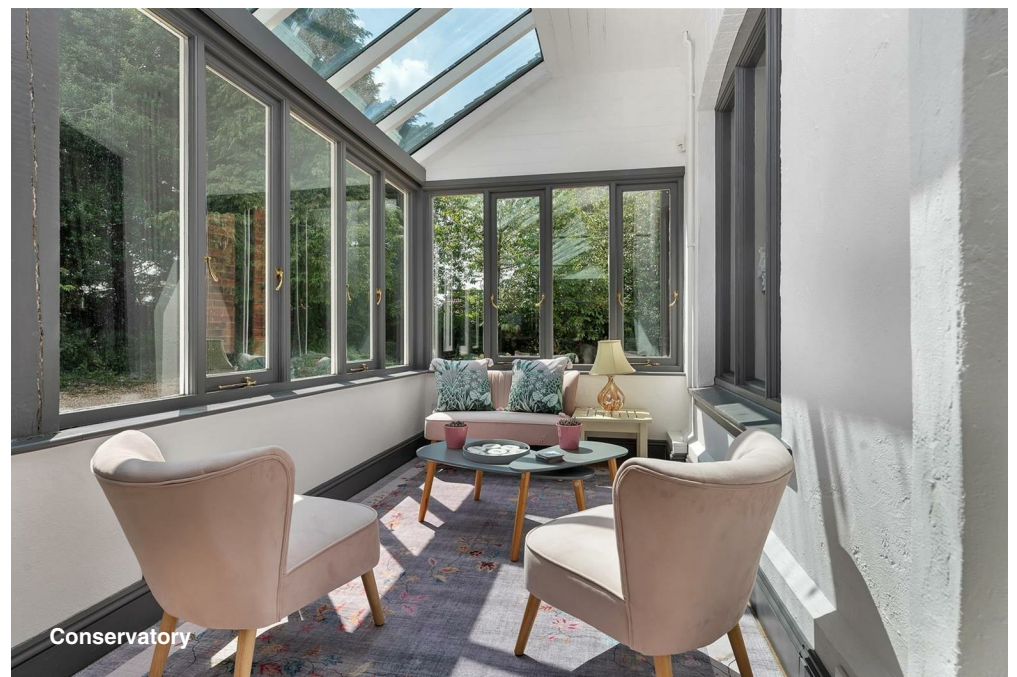
Family/Dining Room



Sitting Room



Lounge



Conservatory



Master Bedroom



Bedroom



Bathroom



Bedroom

Meadowcroft, 118 Dalby Road, Melton Mowbray

Approximate Gross Internal Area

Main House = 388 sq.m/4177 sq.ft

Garage = 152 sq.m/1641 sq.ft

Annexe = 63 sq.m/673 sq.ft

Total = 603 sq.m/6491 sq.ft

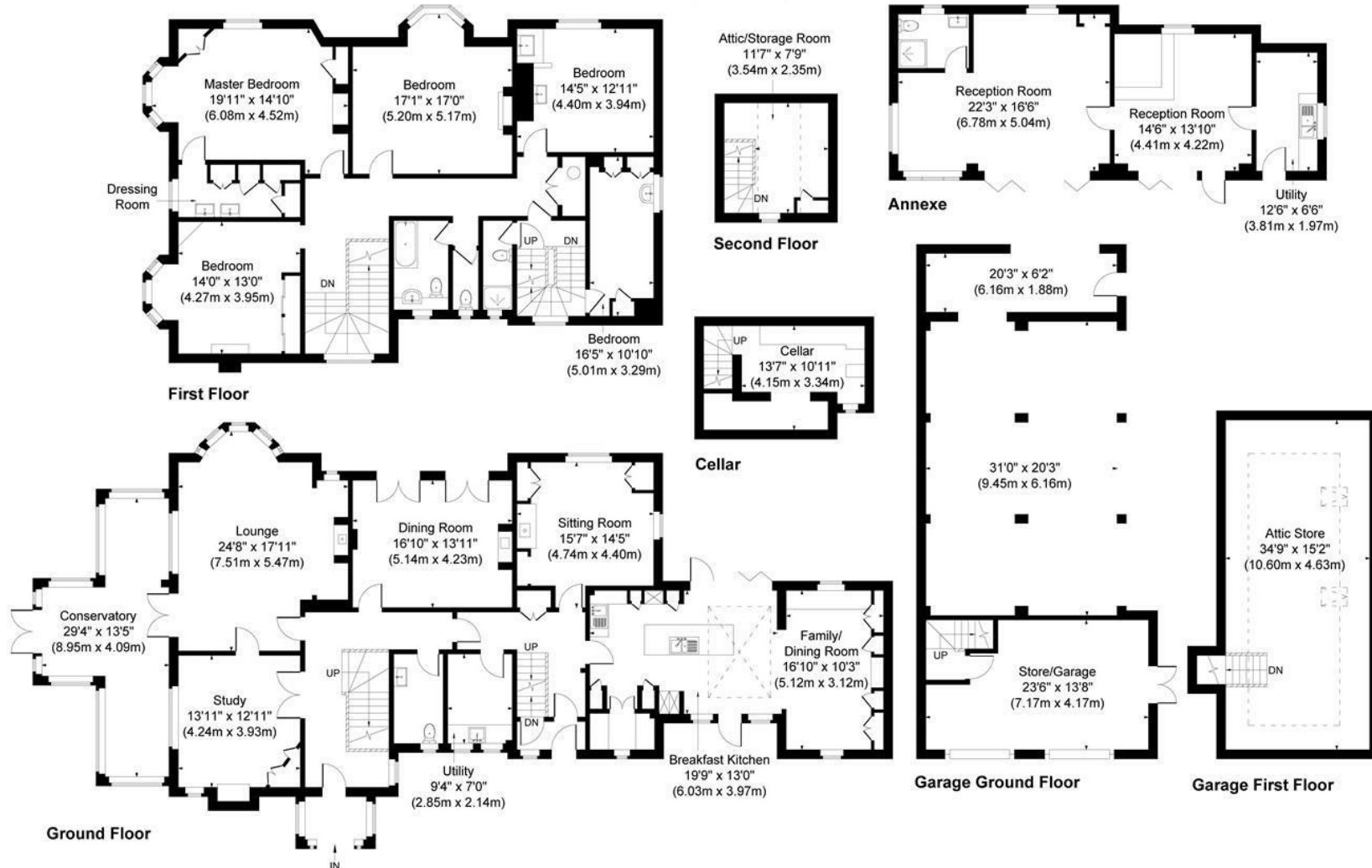
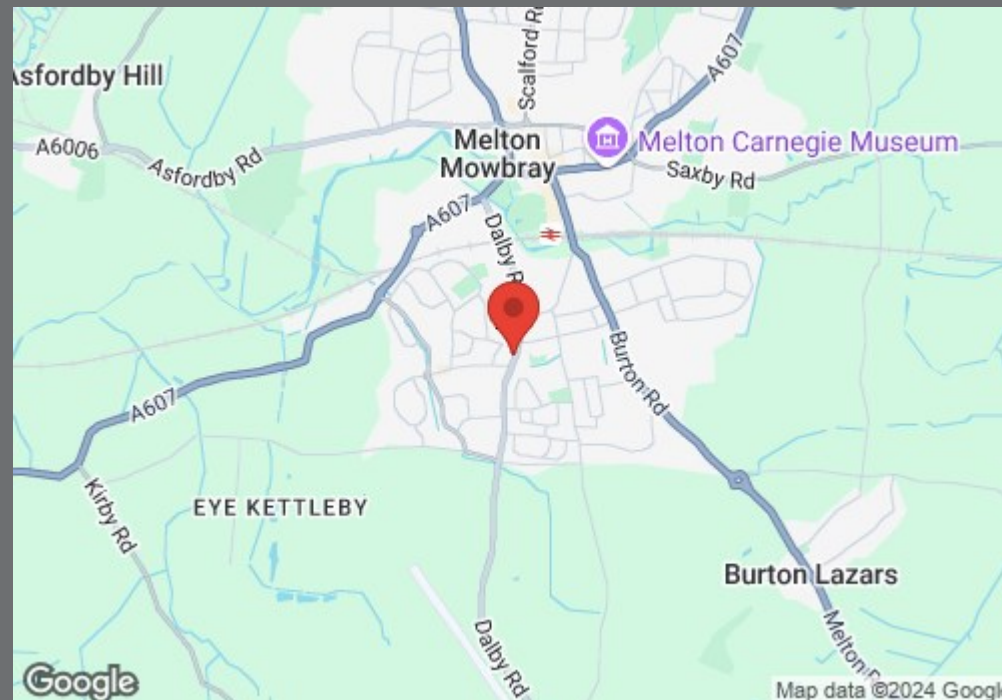


Illustration for identification purposes only, measurements are approximate, not to scale.

JonHolmesPhotography © 2024



- **SUBSTANTIAL PERIOD RESIDENCE**
- **FIVE BEDROOMS**
- **RENOVATED TO HIGH STANDARD BY CURRENT OWNERS**
- **PARTIAL NEW ROOF**
- **STUNNING 10m x 4.5m REFITTED KITCHEN**
- **NEWLY FIT BATHROOM**
- **REFURBISHED SEALED UNIT DOUBLE GLAZING & STAINED GLASS**
- **RETAINED CHARACTER FEATURES THROUGHOUT**
- **FOUR RECEPTION ROOMS**
- **FOUR BAY CAR PORT & SEPERATE ANNEXE**



sport.thick.unable



County Chambers, Kings Road,
Melton Mowbray, Leicestershire LE13 1QF

Tel: 01664 560181

www.shoulers.co.uk
housesales@shoulers.co.uk
lettings@shoulers.co.uk


Land & Estate Agents, Valuers & Auctioneers

We produce property particulars in good faith and believe them to be correct. We generally rely on what we are told without obtaining proof. You should verify for yourself such information before entering into a contract to take this property. Neither Shouler & Son nor their clients guarantee accuracy of the particulars, and they are not intended to form any part of a contract. No person in the employment of Shouler & Son has authority to give any representation or warranty in respect of this property.