



Ash Drive Hatfield AL10 8LJ

for sale offers in excess of
£350,000



Property Description

This two/three bedroom end terraced family home comprises of an entrance hall, kitchen, dining room/third bedroom and utility room to the ground floor and then two bedrooms and a bathroom on the first floor. Externally there is off road parking and enclosed rear garden.

Ash Drive is located close by to the University of Hertfordshire, David Lloyd's leisure centre and the Galleria shopping centre which has an array of shops, restaurants and a cinema. It is also close by to Hatfield train station giving direct access into Kings Cross. There is also a great choice of primary schools, secondary schools and parks so is an ideal location for families. CHAIN FREE.

Entrance Hall

Double glazed door to the front, window to the front and stairs to the first floor.

Lounge

9' 5" x 9' 4" (2.87m x 2.84m)

Double glazed window to the front aspect, radiator and wood effect flooring.

Dining Room

9' 6" x 9' 2" (2.90m x 2.79m)

Window to the rear, radiator and wood effect flooring.

Kitchen

Double glazed window to the rear aspect, fitted kitchen with a range of wall and base units, sink/drain, work surfaces and tiling, oven, hob and cooker hood, radiator and storage cupboard.

Utility Room / Store Room

13' 5" x 5' 5" (4.09m x 1.65m)

Door to side, window to the rear and plumbing for washing machine.

Landing

Double glazed window to the side aspect and loft access.

Bedroom One

13' 5" x 8' 6" (4.09m x 2.59m)

Double glazed window to the front aspect, coving and storage cupboard.

Bedroom Two

10' 4" x 10' 8" (3.15m x 3.25m)

Double glazed window to the rear aspect and radiator.

Bathroom

Double glazed window, three piece suite comprising of wc, wash hand basin and bath, radiator and full tiling.

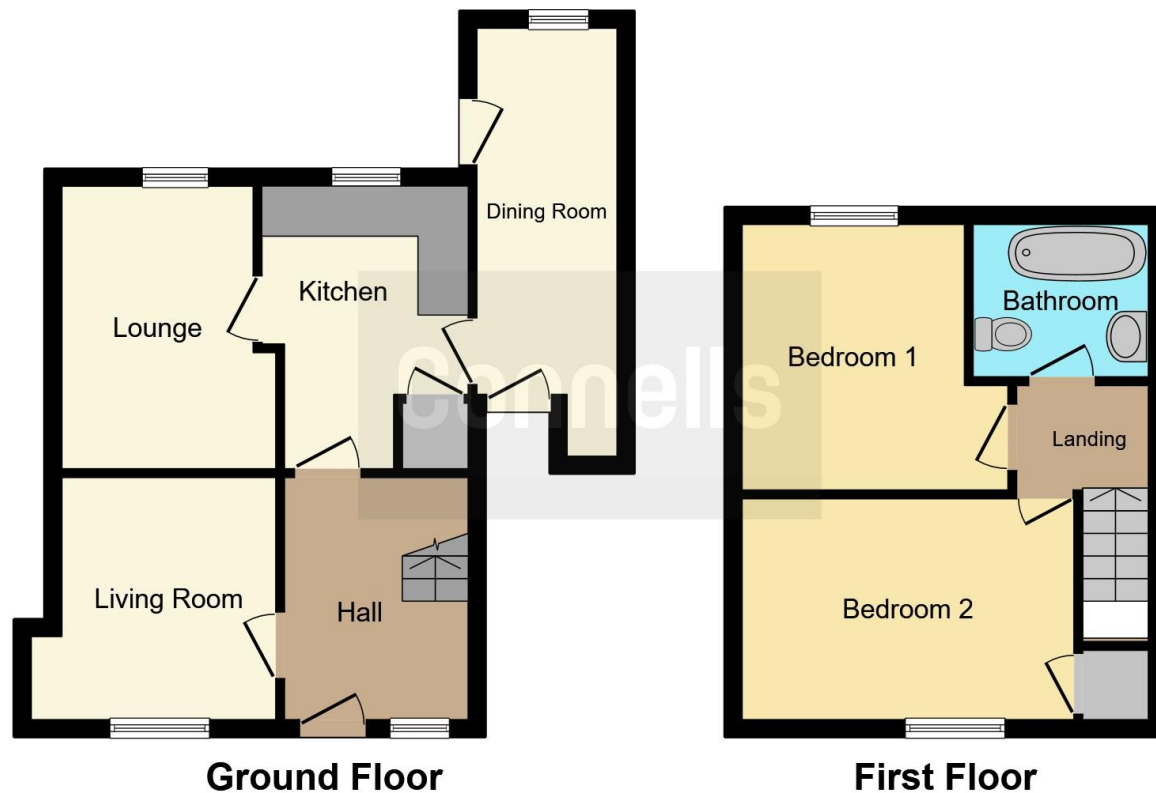
Front Garden

Off road parking for up to two cars.

Rear Garden

Mainly laid to lawn with path and fences to the borders.





This floor plan is for illustrative purposes only. It is not drawn to scale. Any measurements, floor areas (including any total floor area), openings and orientation are approximate. No details are guaranteed, they cannot be relied upon for any purpose and they do not form part of any agreement. No liability is taken for any error, omission or misstatement. A party must rely upon its own inspection(s). Powered by www.focalagent.com

To view this property please contact Connells on

T 01727 851 100
E marshalswick@connells.co.uk

5 Wycombe Place The Quadrant Marshalswick
 ST ALBANS AL4 9RH

EPC Rating: D

view this property online connells.co.uk/Property/MWK305905



Tenure: Freehold



1. MONEY LAUNDERING REGULATIONS Intending purchasers will be asked to produce identification documentation at a later stage and we would ask for your co-operation in order that there will be no delay in agreeing the sale. 2. These particulars do not constitute part or all of an offer or contract. 3. The measurements indicated are supplied for guidance only and as such must be considered incorrect. Potential buyers are advised to recheck measurements before committing to any expense. 4. We have not tested any apparatus, equipment, fixtures, fittings or services and it is in the buyers interest to check the working condition of any appliances.

Connells Residential is registered in England and Wales under company number 1489613, Registered Office is Cumbria House, 16-20 Hockliffe Street, Leighton Buzzard, Bedfordshire, LU7 1GN. VAT Registration Number is 500 2481 05.

See all our properties at www.connells.co.uk | www.rightmove.co.uk | www.zoopla.co.uk

Property Ref: MWK305905 - 0004