



OVER 60?

Secure this property
for up to **59% less!**

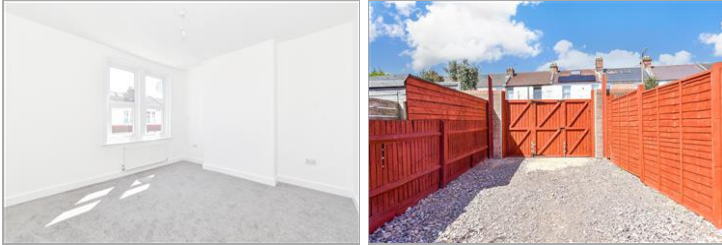
Price
£350,000

Freehold

3x  1x  2x 

**St. Augustine Road,
Southsea, Hampshire,
PO4**

cubitt&west
Helping you move forwards



Main features

- Chain free
- Off road parking to the rear of property
- Fully refurbished to a high standard
- Sought after location
- Close to transport links and local amenities

Accommodation

GROUND FLOOR

Entrance Hallway

Lounge: 14'7 x 10'2 (4.45m x 3.10m)

Dining Room: 12'2 x 7'4 (3.71m x 2.24m)

Kitchen: 15'8 x 9'8 (4.78m x 2.95m)

Cloakroom

FIRST FLOOR

Landing

Bedroom 1: 13'4 x 11'10 (4.07m x 3.61m)

Bedroom 2: 11'6 x 9'9 (3.51m x 2.97m)

Bedroom 3: 11'9 x 7'3 (3.58m x 2.21m)

Bathroom

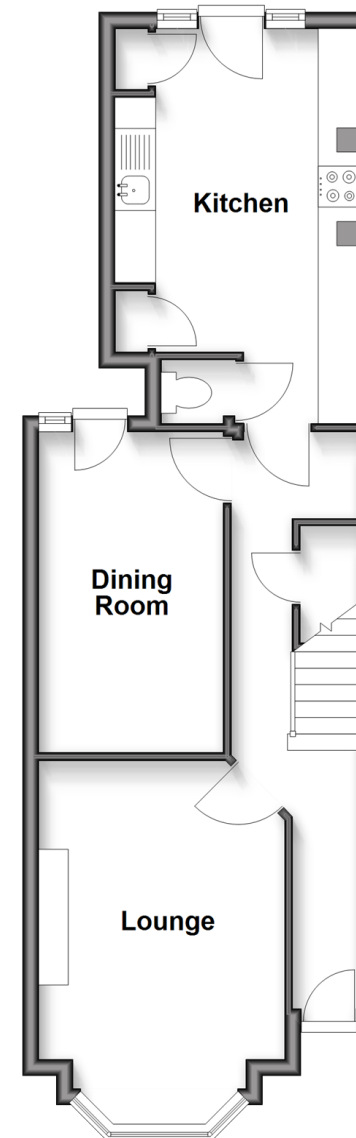
OUTSIDE

Rear Garden

Off Road Parking

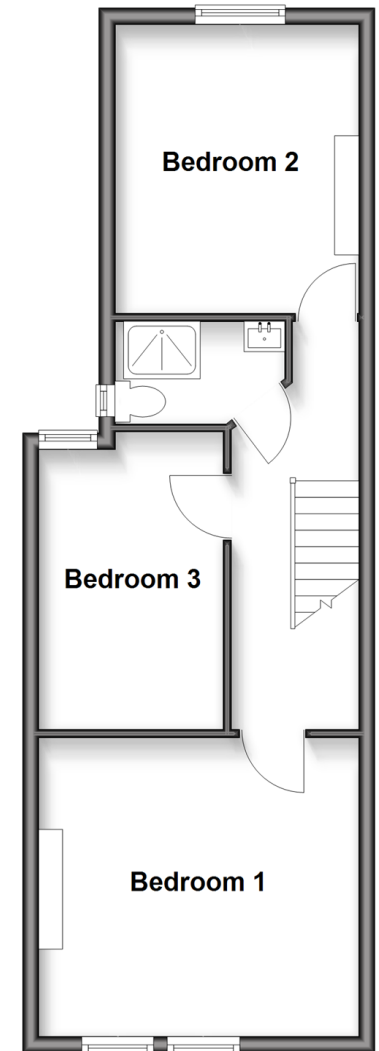
Ground Floor

Approx. 44.6 sq. metres (480.3 sq. feet)



First Floor

Approx. 43.6 sq. metres (469.2 sq. feet)



Call Southsea - 023 9229 6396 ■ cubittandwest.co.uk

- Legal advice should be taken to verify fixtures/fittings, planning, alterations and/or lease details
- Appliances & services are untested, dimensions are approximate and floor plans are not to scale
- Through a Homewise Home For Life Plan people aged 60+ can secure this property for up to 59% less, by purchasing a Lifetime Lease.



42227416/20250512/JT/YH