



**Offers In
Excess Of
£270,000
Freehold**

3x  2x  2x 

**Kingsley Road,
Southsea, Hampshire,
PO4**

cubitt&west
Helping you move forwards



Main features

- Modern and neutral decor
- Great sized rooms throughout
- Sunny aspect enclosed rear garden
- Central location close to local amenities
- Bransbury and Milton Parks close by

Accommodation

GROUND FLOOR

Lounge: 13'0 x 10'3 (3.97m x 3.13m)
 Dining Room: 13'0 x 10'10 (3.97m x 3.30m)
 Kitchen: 12'1 x 8'8 (3.69m x 2.64m)
 Bathroom

FIRST FLOOR

Landing
 Bedroom 2: 10'11 x 10'2 (3.33m x 3.10m)
 Bedroom 3: 13'0 x 10'2 (3.97m x 3.10m)
 Shower Room

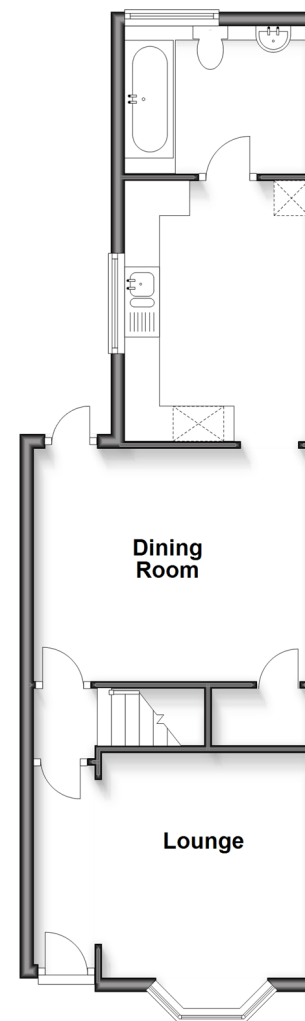
SECOND FLOOR

Bedroom 1: 17'6 x 12'9 (5.34m x 3.89m)

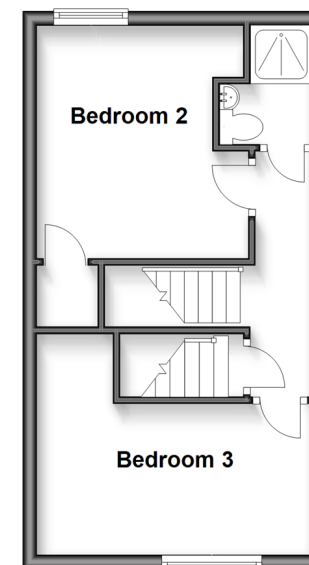
OUTSIDE

Rear Garden

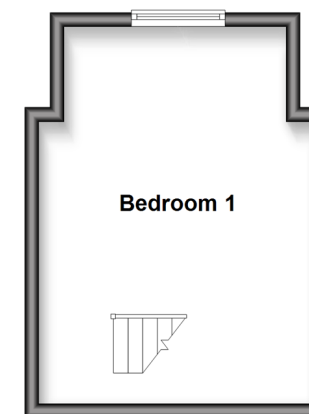
Ground Floor
 Approx. 45.8 sq. metres (493.1 sq. feet)



First Floor
 Approx. 29.9 sq. metres (321.7 sq. feet)



Second Floor
 Approx. 20.3 sq. metres (218.2 sq. feet)



Call Southsea - 023 9229 6396 ■ cubittandwest.co.uk

- Legal advice should be taken to verify fixtures/fittings, planning, alterations and/or lease details
- Appliances & services are untested, dimensions are approximate and floor plans are not to scale



42227375/20250408/RW/SA