



OVER 60?

Secure this property
for up to **59% less!**

Price

£275,000

Freehold

2x  1x  1x 

**Goodwood Road,
Southsea, Hampshire,
PO5**

cubitt&west
Helping you move forwards



Main features

- Modern kitchen and bathroom
- Open plan living
- Rear garden
- Situated within walking distance to Southsea
- Close to local amenities and transport links

Accommodation

GROUND FLOOR

Lounge: 13'6 x 11'8 (4.12m x 3.56m)

Kitchen/Dining Area: 25'4 x 12'6 (7.73m x 3.81m)

Bathroom

FIRST FLOOR

Landing

Bedroom 1: 11'11 x 10'5 (3.63m x 3.18m)

Bedroom 2: 11'11 x 9'9 (3.63m x 2.97m)

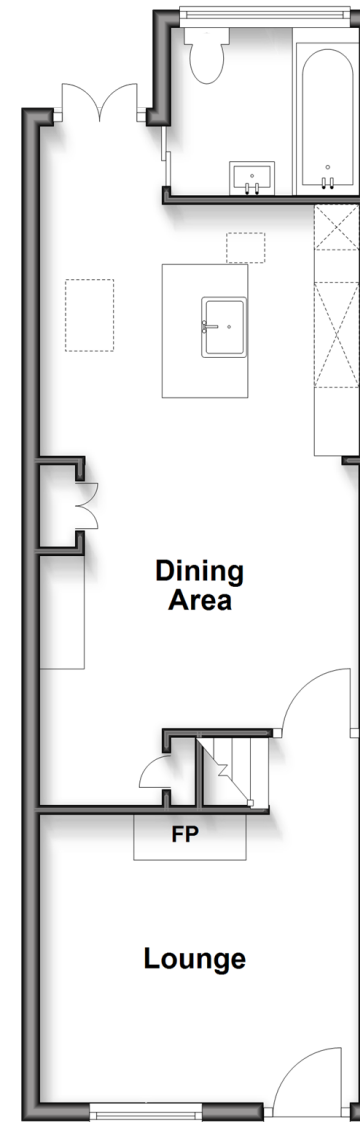
OUTSIDE

Rear Garden

Resident Permit Parking

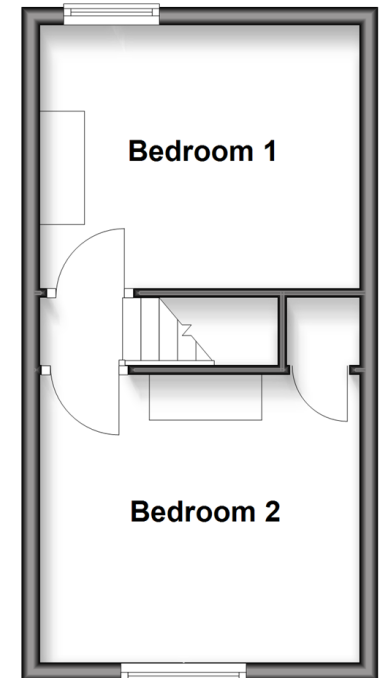
Ground Floor

Approx. 40.7 sq. metres (437.9 sq. feet)



First Floor

Approx. 25.1 sq. metres (270.0 sq. feet)



Call Southsea - 023 9229 6396 ■ cubittandwest.co.uk

- Legal advice should be taken to verify fixtures/fittings, planning, alterations and/or lease details
- Appliances & services are untested, dimensions are approximate and floor plans are not to scale
- Through a Homewise Home For Life Plan people aged 60+ can secure this property for up to 59% less, by purchasing a Lifetime Lease.



42227350/20250208/JT/YH