



Price

£150,000

Leasehold

1x  1x  1x 

Bransbury Mews,  
Henderson Road,  
Eastney, Hampshire,  
PO4

**OVER 60?**

Secure this property  
for up to **59% less!**

**cubitt & west**  
Helping you move forwards



## Main features

- Short walk to the beach and seafront
- Fabulous location overlooking Bransbury park
- No forward chain
- Milton Shops and daily amenities close by
- Easy access to transport links in and out of the city

## Accommodation

### FIRST FLOOR

Entrance Hallway

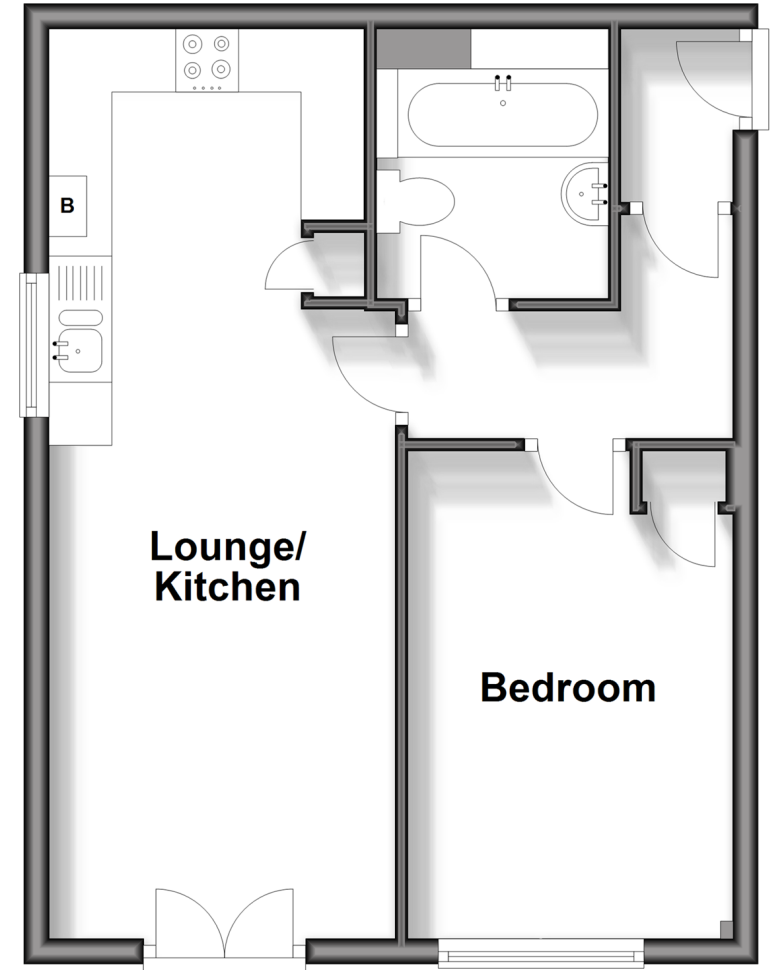
Lounge/Kitchen : 23'4 x 9'1 (7.12m x 2.77m)

Bedroom : 13'0 x 8'5 (3.97m x 2.57m)

Bathroom

## First Floor

Approx. 39.2 sq. metres (422.1 sq. feet)



Call Southsea - 023 9229 6396 ■ [cubittandwest.co.uk](http://cubittandwest.co.uk)

- Legal advice should be taken to verify fixtures/fittings, planning, alterations and/or lease details
- Appliances & services are untested, dimensions are approximate and floor plans are not to scale
- Through a Homewise Home For Life Plan people aged 60+ can secure this property for up to 59% less, by purchasing a Lifetime Lease.



42227090/20241112/HS/SA